

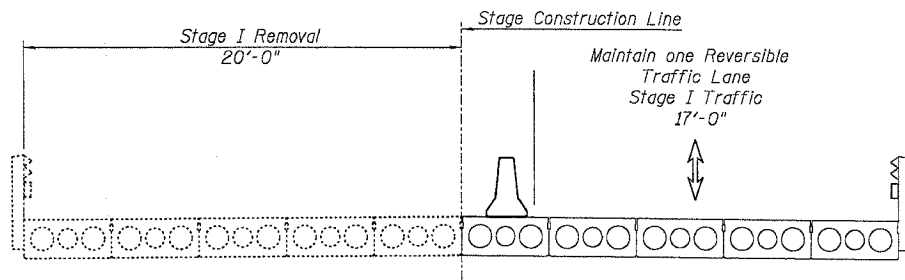
STATE OF ILLINOIS
DEPARTMENT OF TRANSPORTATION

ROUTE NO.	SECTION	COUNTY	TOTAL SHEETS	SHEET NO.
FAP RT.308	109 BR-3	Whiteside	47	31
STA.	TO STA.			

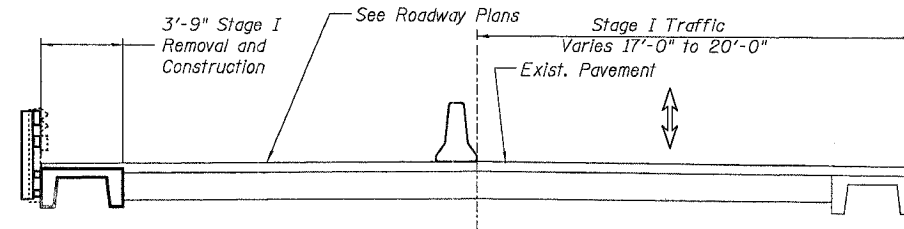
GENERAL NOTES

Sheet 2 of 12

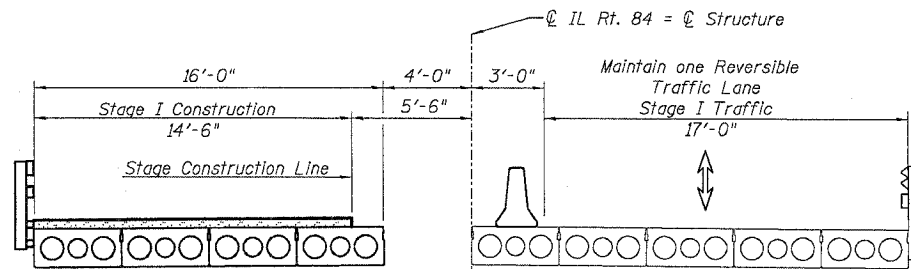
Contract # 64829



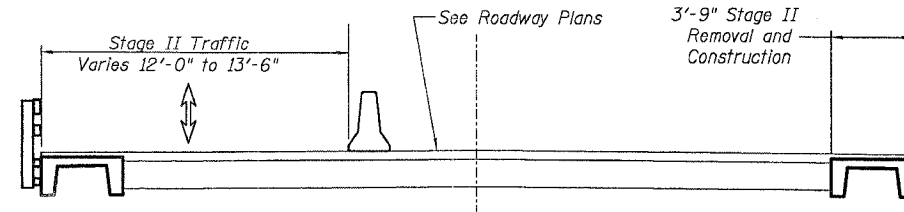
STAGE I REMOVAL BRIDGE DECK
LOOKING SOUTH



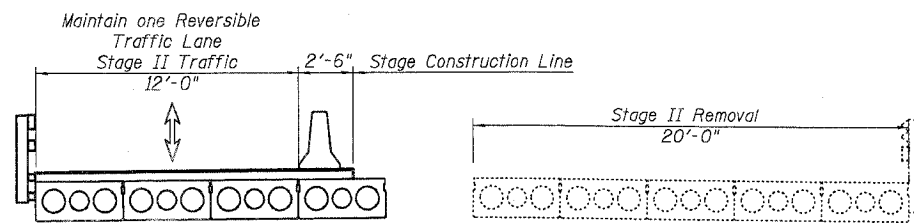
STAGE I REMOVAL AND CONSTRUCTION APPROACH
LOOKING SOUTH



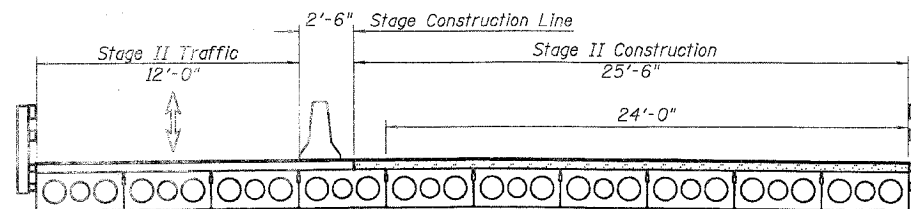
STAGE I CONSTRUCTION BRIDGE DECK
LOOKING SOUTH



STAGE II REMOVAL AND CONSTRUCTION APPROACH
LOOKING SOUTH



STAGE II REMOVAL BRIDGE DECK
LOOKING SOUTH



STAGE II CONSTRUCTION BRIDGE DECK
LOOKING SOUTH

- The cut strands at each beam end shall be given two coats of zinc dust spray or paint meeting the requirements of ASTM A780. The zinc dust spray or paint shall be applied before corrosion appears and allowed to dry according to the manufacturer's specifications prior to another coat of zinc. A concrete sealer meeting the requirements of Section 587 of the Standard Specifications shall be applied to the exterior face and 9" in on the underside of the fascia beams. The sealer shall be applied after visible crack growth has subsided. This work shall be performed by the producer and included in the cost of the beam.
- The minimum thickness of the Concrete overlay shall be 5" and varies as required to adjust for the new profile grade and beam camber.
- The Contractor is advised that the existing PPC Deck Beams are in a deteriorated condition with reduced load carrying capacity. It is the Contractor's responsibility to account for the condition of the beams when developing construction procedures for removal and replacement of the superstructure.
- Repair of the substructure shall be completed prior to placement of the new deck beams.
- Reinforcement bars shall conform to the requirements of AASHTO M31, or M322 Grade 60.
- Plan dimensions and details relative to existing structure have been taken from existing plans and are subject to nominal construction variations. It shall be the Contractor's responsibility to verify such dimensions and details in the field and make necessary approved adjustments prior to construction or ordering of materials. Such variations shall not be cause for additional compensation for a change in the scope of the work, however, the Contractor will be paid for the quantity actually furnished at the unit price for the work.
- Bridge Seat Sealer shall be applied to the seat area of the abutments.
- All construction joints shall be bonded.
- No in-stream work will be allowed on this project
- Reinforcement Bars designated "E" shall be epoxy coated.
- Reinforcement Bar Splices shall be in accordance with the following table unless shown otherwise on the drawing.

Size	Basic Lap	Top Bars Lap
#4	1'-8"	2'-5"
#5	2'-2"	3'-0"
#6	2'-7"	3'-7"
- The existing bearing pads contain asbestos. The contractor shall take appropriate precautions to deal with the presence of asbestos in the bearing pads and shall be responsible for disposal in an appropriate facility. See Special Provisions
- Removal of the approach channel beams shall be included under the Contract Unit Price for Bridge Approach Shoulder Removal.
- Removal of existing back walls shall be included under the contract unit price for Concrete Removal.

TOTAL BILL OF MATERIALS

CODE NO.	DESCRIPTION	UNIT	SUPER	SUB	TOTAL
50101500	Removal of Existing Superstructures	EACH	1	-	1
50102400	Concrete Removal	CU YD	-	2.2	2.2
Z0002600	Bar Splicers	Each	4	-	4
50300205	Concrete Structures	CU YD	-	0.9	0.9
50300205	Concrete Superstructure	CU YD	2.4	-	2.4
50300200	Bridge Deck Grooving	SQ YD	210	-	210
50300300	Protective Coat	SQ YD	210	-	210
50301205	Formed Concrete Repair (Depth Less than or Equal to 5")	SQ FT	-	205	205
50400405	Precast Prestressed Concrete Deck Beams (21" Depth)	SQ FT	1,887	-	1,887
50800205	Reinforcement Bars, Epoxy Coated	POUND	3,000	-	3,000
50901005	Steel Bridge Rail, Type SM	FOOT	208	-	208
51500100	Name Plates	EACH	1	-	1
58700200	Bridge Seat Sealer	SQ FT	-	195	195
59000100	Epoxy Crack Sealing	FOOT	-	50	50
X0300136	Bridge Approach Shoulder Removal	SQ YD	47	-	47
X0320887	Polymer Concrete	CU FT	10	-	10
X0322932	Silicone Joint Sealer, 1 1/2"	FOOT	40	-	40
X5030305	Concrete Wearing Surface, 5"	SQ YD	210	-	210
XX004703	Precast Concrete Beam Unit	EACH	4	-	4
Z0001900	Asbestos Bearing Pad Removal	EACH	18	-	18

DESIGNED	MGH
CHECKED	RGD
DRAWN	MDJ
CHECKED	NRF

GENERAL NOTES AND BILL OF MATERIALS
IL. RT. 84
OVER CEDAR CREEK
F.A.P. ROUTE 308 - SECTION 109 BR-3
WHITESIDE COUNTY
STA. 225+65.77
SN 098-0022

