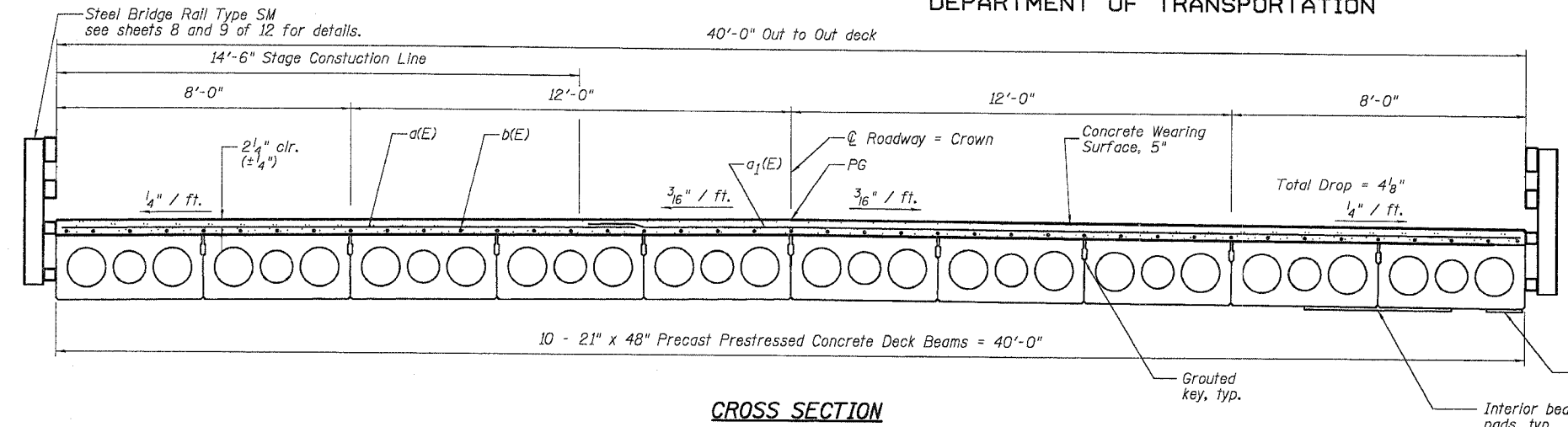
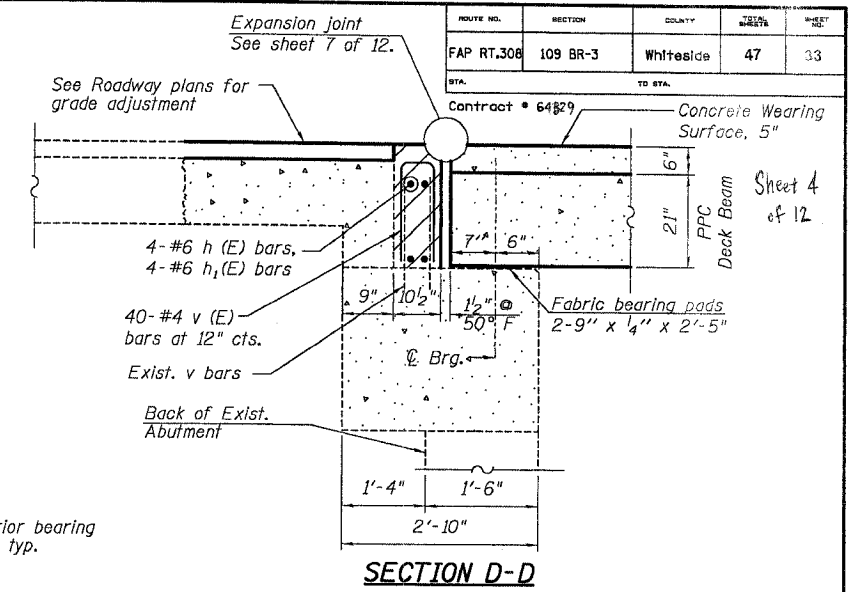


STATE OF ILLINOIS  
DEPARTMENT OF TRANSPORTATION

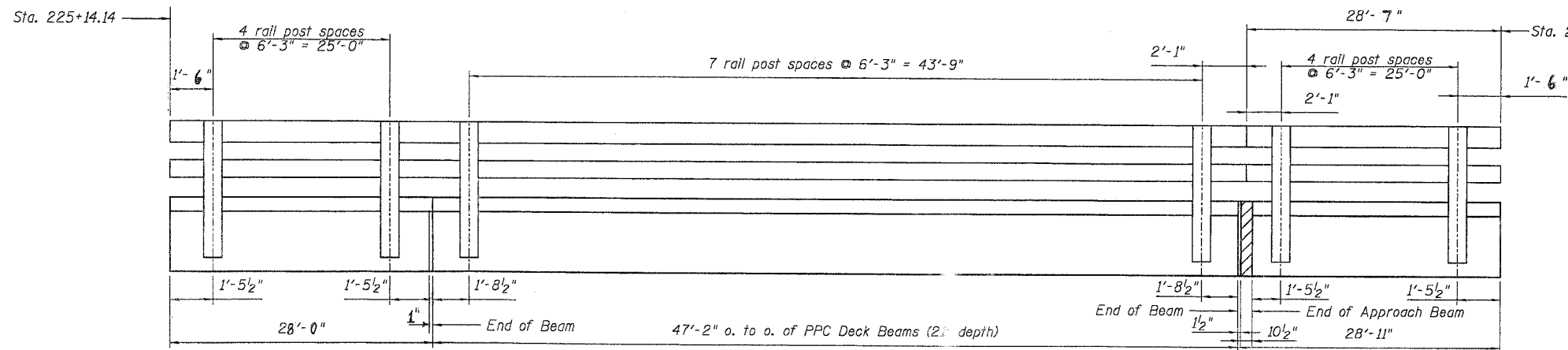
ROUTE NO.	SECTION	COUNTY	SHEET	SHEET
FAP RT.308	109 BR-3	Whiteside	47	33



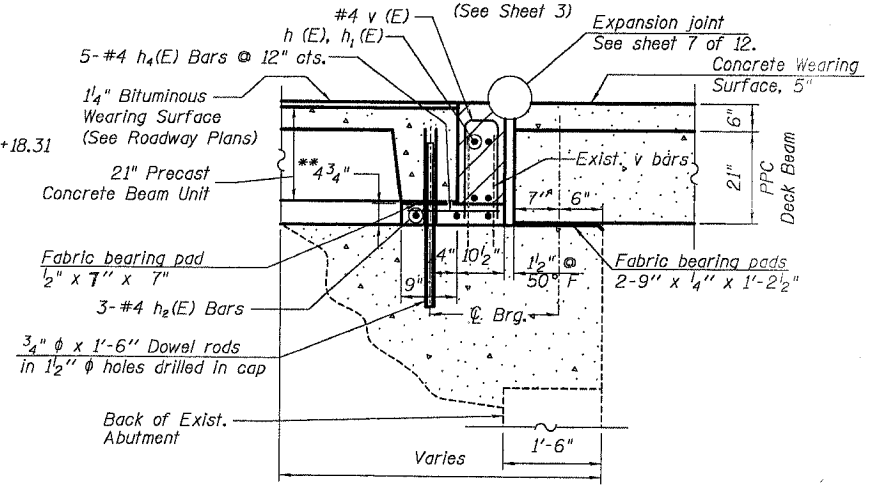
CROSS SECTION



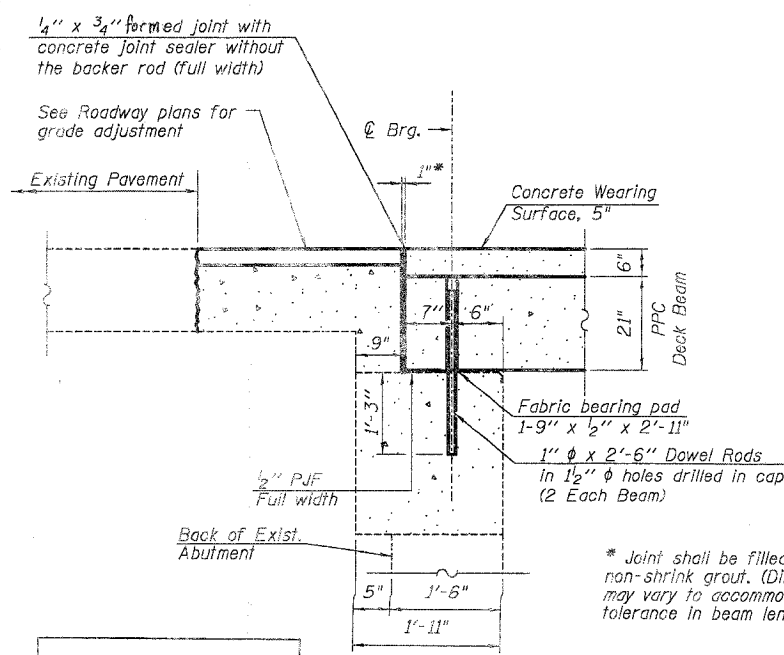
SECTION D-D  
THRU SOUTH ABUTMENT - AT C ROADWAY



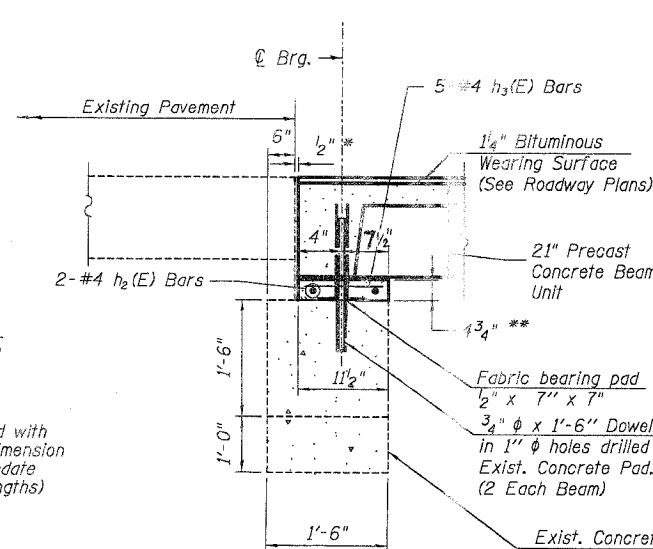
RAIL POST SPACING  
ELEVATION



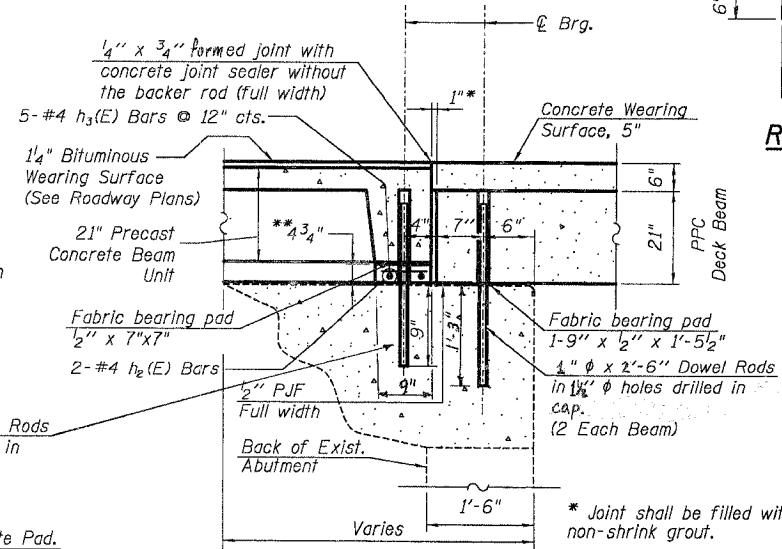
SECTION E-E  
THRU SOUTH ABUTMENT - OUTSIDE BEAM



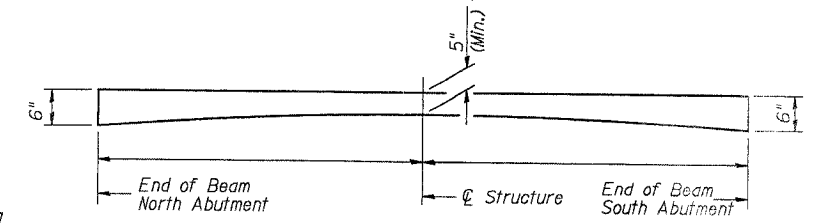
SECTION F-F  
THRU NORTH ABUTMENT  
AT C ROADWAY  
(See Sheet 3)



SECTION G-G  
THRU APPROACH  
OUTSIDE BEAM  
(See Sheet 3)



SECTION H-H  
THRU NORTH ABUTMENT  
OUTSIDE BEAM  
(See Sheet 3)



REINFORCED CONCRETE WEARING SURFACE PROFILE

NOTES:

- After beams have been erected, holes shall be drilled into substructure and dowel rods placed. Dowel holes shall be filled with non-shrink grout to top of beam and allowed to cure min. 24 hrs. prior to grouting the shear keys.
- See sheets 44 for fabric bearing pad details.
- Concrete Wearing Surface, 5" to be poured after grouting the shear keys.
- Dowel rods drilled in abutments and existing concrete pads at approaches are included in the cost of Precast Prestressed Concrete Deck Beams (21" depth)
- All horizontal dimensions are at right angles to beam ends.
- Hatched area to be poured after Concrete Wearing Surface is in place.
- \*\* Additional concrete to be paid for under the item Concrete Structures.

DESIGNED	MGH
CHECKED	RGD
DRAWN	MDJ
CHECKED	HRF

SUPERSTRUCTURE DETAILS  
IL. RT. 84  
OVER CEDAR CREEK  
F.A.P. ROUTE 308 - SECTION 109 BR-3  
WHITESIDE COUNTY  
STA. 225+65.77  
SN 098-0022

