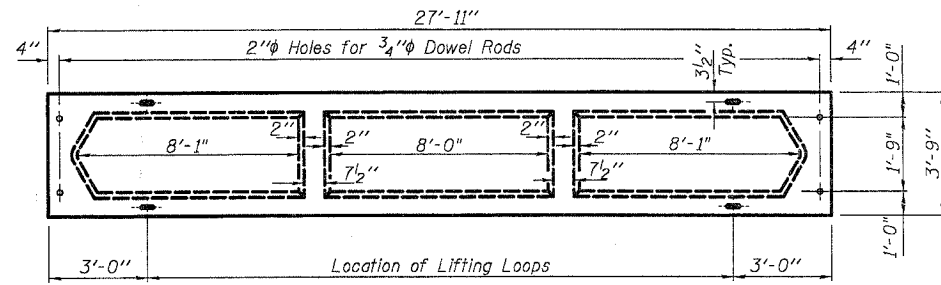


STATE OF ILLINOIS
DEPARTMENT OF TRANSPORTATION

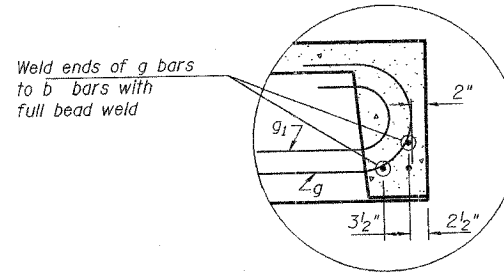
ROUTE NO.	SECTION	COUNTY	SHEETS	SHEET
FAP RT.308	109 BR-3	Whiteside	47	35
STA.		TO STA.		

Contract # 64829

Sheet 6 of 12



TYPICAL PLAN OF BEAM



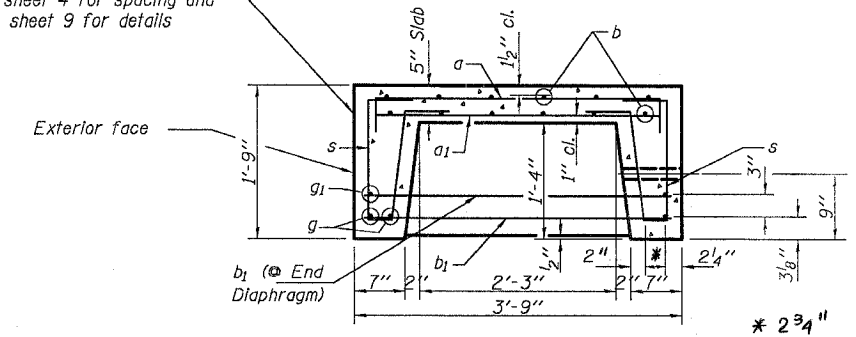
DETAIL A

Note:
The surface of the member shall not deviate more than 1/1200 of the full length of the member from a straight line connecting the two end points on the member's surface. In addition to State inspection and prior to erection, the beam shall be approved by the resident Engineer at the jobsite.

The units shall remain on the bottom supporting forms until the concrete has attained a compressive strength of not less than 3,500 pounds per square inch.

Precast Concrete Beam Units shall meet the requirements of Section 504 of the Standard Specifications and shall be paid for at the contract unit price each for Precast Concrete Beam Unit.

Rail Post Anchor devices.
See sheet 4 for spacing and sheet 9 for details



TYPICAL SECTION THRU BEAM

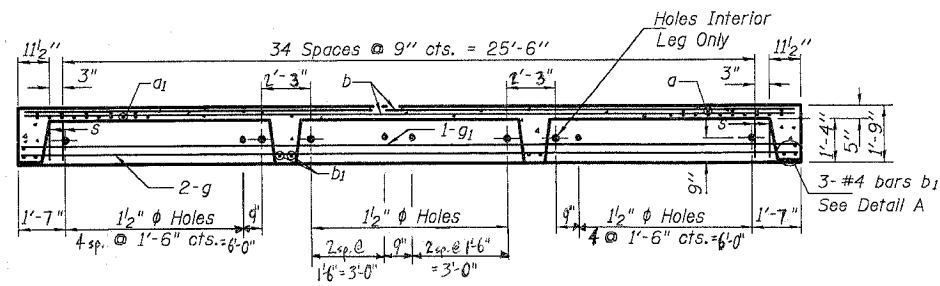
BILL OF MATERIAL - SUPERSTRUCTURE

Precast Concrete Beam Unit	Each	4
----------------------------	------	---

* BILL OF REINFORCEMENT BARS FOR ONE BEAM

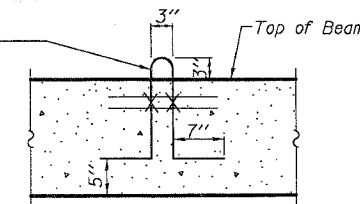
BAR	SIZE	NO.	LENGTH	SHAPE
a	#4	37	4'-0"	U
a1	#4	74	3'-3"	U
b	#4	12	27'-6"	—
b1	#4	10	3'-6"	—
g	#11	4	30'-8"	U
g1	#8	2	29'-4"	U
s	#3	74	3'-10"	U

* For information of suppliers of Precast Slab Units only.



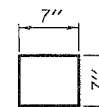
LONGITUDINAL SECTION

2-1/2" Strands/Loop, 2 Ea. End, Ea. Beam. Loop shall be burned off after beams have been erected. Strands shall conform to the requirements of AASHTO M 203.



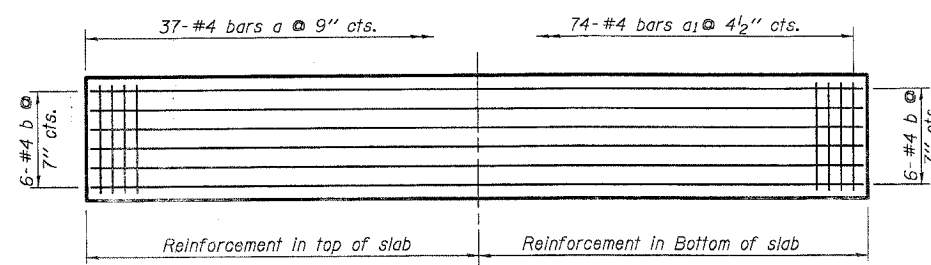
LIFTING LOOP

Approved alternate may be substituted for the above.



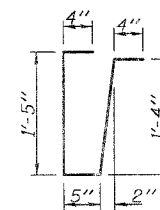
⊗ Exterior Corners
4-1/2" Fabric Pads Req'd. per Beam

BEARING PADS

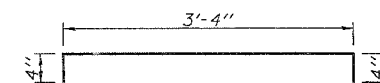


PLAN
Showing Slab Reinforcement

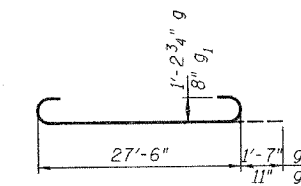
Note:
Refer to sheets 4 of 12 and 9 of 12 for railing details



BAR s



BAR a



BARS g and g1

Note:
Tack welding of stirrups to bottom longitudinal reinforcement bars will not be permitted except as otherwise authorized in writing by the Engineer.

DESIGNED	MGH
CHECKED	RDD
DRAWN	MDJ
CHECKED	NRF



SUPERSTRUCTURE DETAILS
IL. RT. 84
OVER CEDAR CREEK
F.A.P. ROUTE 308 - SECTION 109 BR-3
WHITESIDE COUNTY
STA. 225+65.77
SN 098-0022