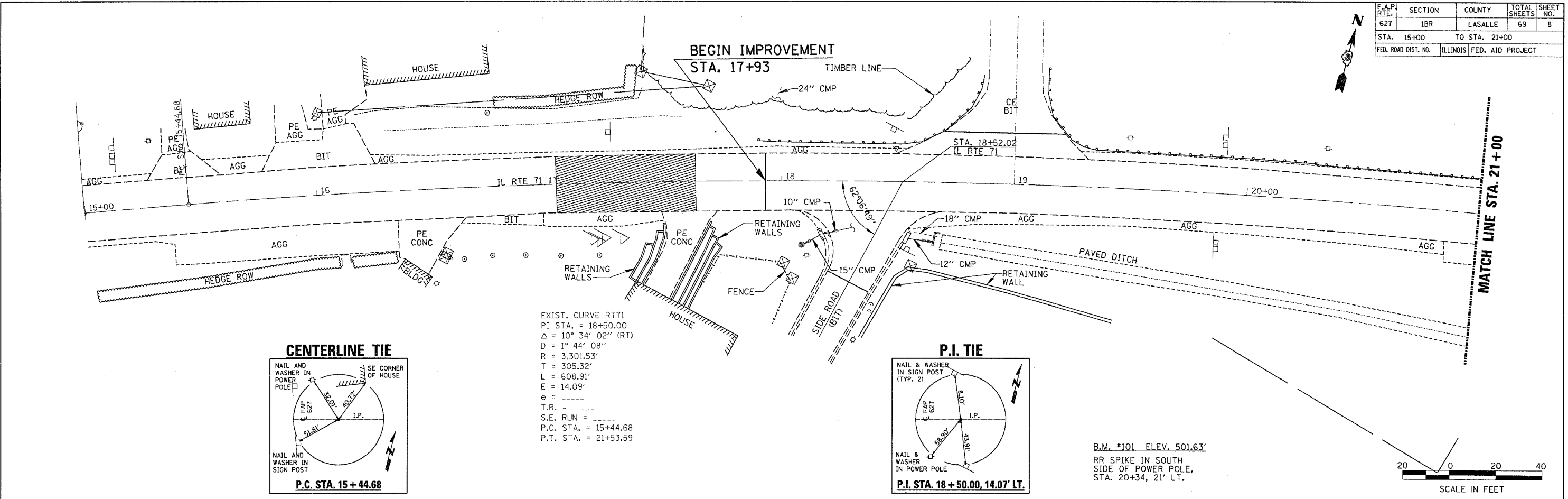


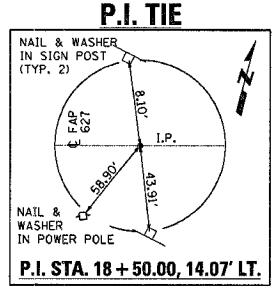
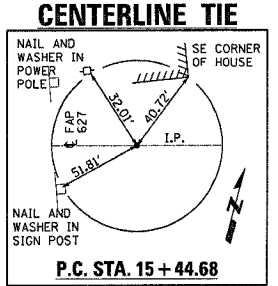
F.A.P. RTE.	SECTION	COUNTY	TOTAL SHEETS	SHEET NO.
627	1BR	LASALLE	69	8
STA. 15+00		TO STA. 21+00		
FED. ROAD DIST. NO.		ILLINOIS FED. AID PROJECT		



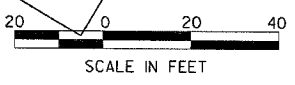
DATE	
BY	
DESIGNED	
CHECKED	
IN CHARGE	
NOTE BOOK NO.	
PLAN NO.	



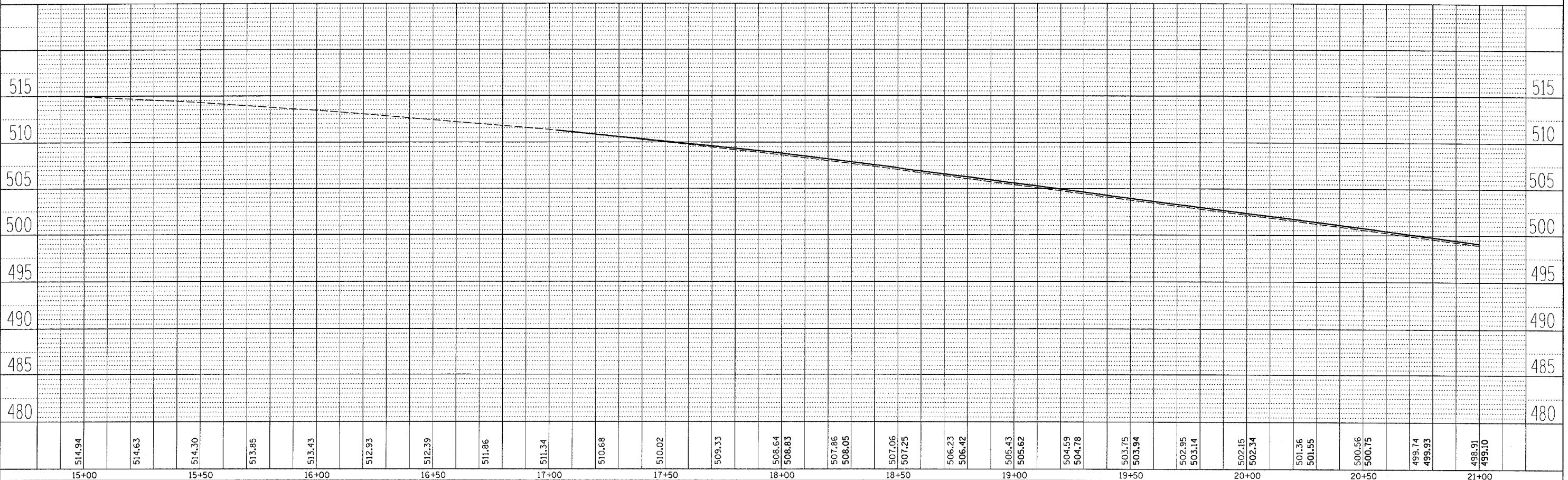
EXIST. CURVE RT71
 PI STA. = 18+50.00
 $\Delta = 10^\circ 34' 02''$ (RT)
 $D = 1^\circ 44' 08''$
 $R = 3,301.53'$
 $T = 305.32'$
 $L = 608.91'$
 $E = 14.09'$
 $e =$
 $T.R. =$
 $S.E. RUN =$
 $P.C. STA. = 15+44.68$
 $P.T. STA. = 21+53.59$



B.M. #101 ELEV. 501.63'
 RR SPIKE IN SOUTH SIDE OF POWER POLE, STA. 20+34, 21' LT.



DATE	
BY	
DESIGNED	
CHECKED	
IN CHARGE	
NOTE BOOK NO.	
PROFILE NO.	



10/31/2005
 c:\projects\ep07102\cons\11\cadd\paf.dgn