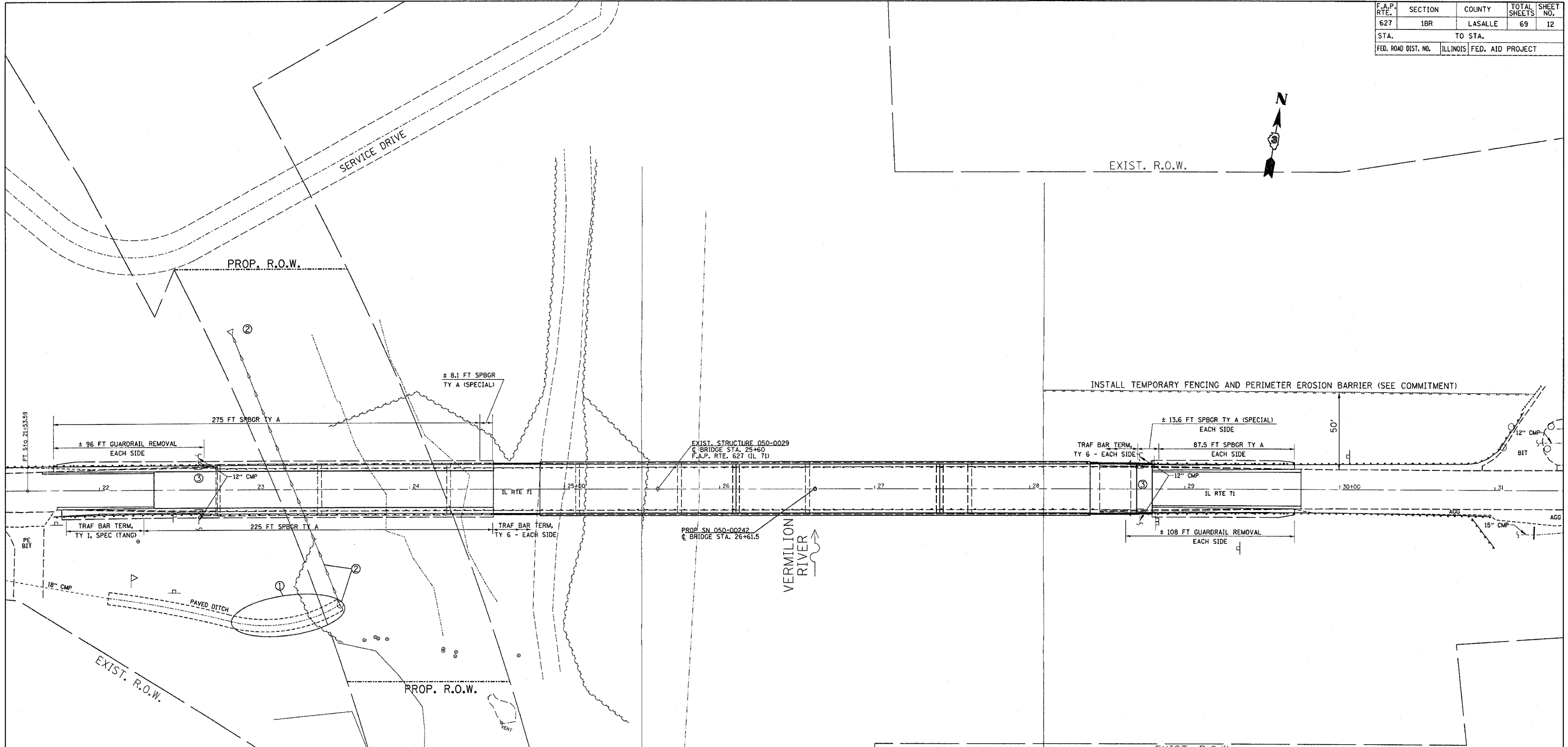
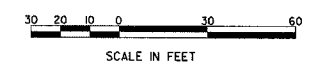


F.A.P. RTE.	SECTION	COUNTY	TOTAL SHEETS	SHEET NO.
627	1BR	LASALLE	69	12
STA.		TO STA.		
FED. ROAD DIST. NO.		ILLINOIS FED. AID PROJECT		



- NOTES:**
- APPROXIMATELY 75' OF PAVED DITCH REMOVAL AND REPLACEMENT HAS BEEN INCLUDED IN THE PLANS FOR REGRADING THE DITCHES AS NECESSARY. ACTUAL QUANTITY TO BE DETERMINED IN THE FIELD.
 - EXISTING PLANS INDICATE THE PRESENCE OF A CATCH BASIN AT STA. 23+55 75' RT AND A HEADWALL AT STA. 22+85.5 100' LT CONNECTED BY AN 18" STORM SEWER. WHILE A VISUAL INSPECTION DID NOT REVEAL THE LOCATION OF THESE DRAINAGE ITEMS, QUANTITY HAS BEEN ADDED FOR THE REMOVAL OF THE HEADWALL AND CATCH BASIN IN THE EVENT THESE ITEMS ARE UNCOVERED DURING CONSTRUCTION. PLUGGING THE STORM SEWER SHALL BE INCLUDED IN THE COST OF THE REMOVAL ITEMS.
 - STA. 22+64 & STA. 28+71: REMOVE CATCH BASINS, HEADWALLS AND 12" STORM SEWER.



PLOT DATE = 10/21/2005
 PLOT SCALE = AS SHOWN
 USER NAME = MUSER

REVISIONS		ILLINOIS DEPARTMENT OF TRANSPORTATION
NAME	DATE	
		PLAN SHEET

SCALE: VERT. _____
 HORIZ. _____
 DATE _____

DRAWN BY _____
 CHECKED BY _____