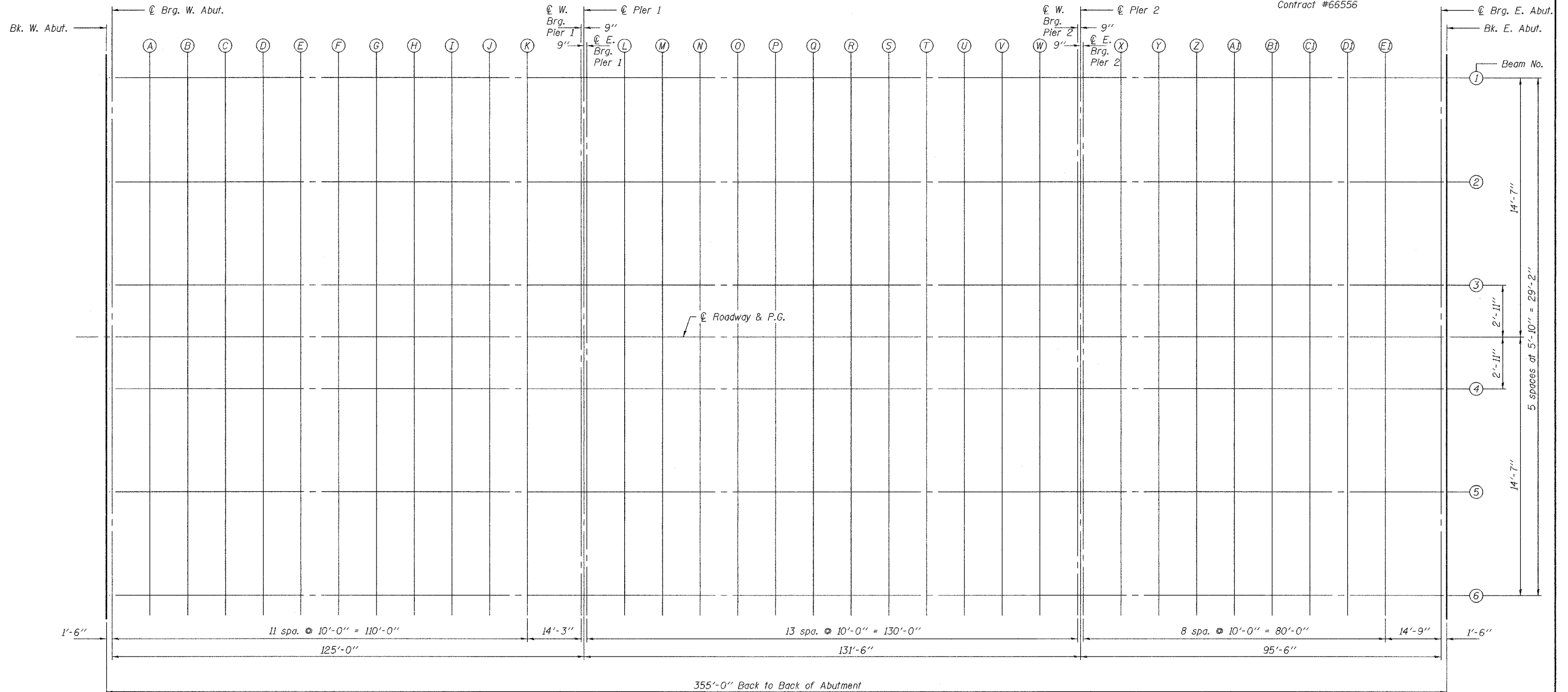


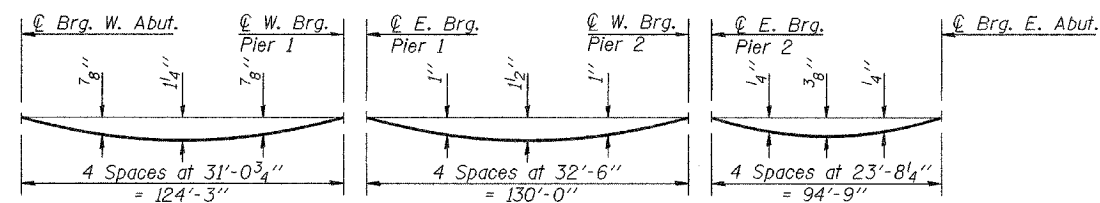
STATE OF ILLINOIS
DEPARTMENT OF TRANSPORTATION

ROUTE NO. F.A.P. 627	SECTION DBR	COUNTY LASALLE	TOTAL SHEETS 69	SHEET NO. 20	SHEET NO. 3 31 SHEETS
FED. ROAD DIST. NO. 7		ILLINOIS		FED. AID PROJECT	

Contract #66556



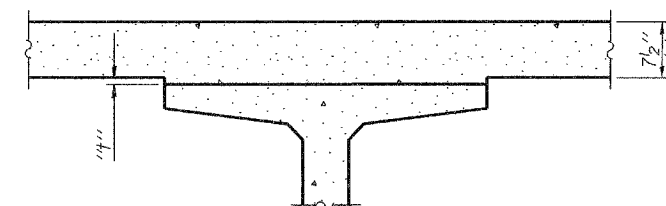
PLAN



DEAD LOAD DEFLECTION DIAGRAM

(Includes weight of concrete, excluding beams).

Note:
The above deflections are not to be used in the field if the engineer is working from the grade elevations adjusted for dead load deflections as shown on sheets 4 and 5 of 31.



FILLET HEIGHTS

To determine "t": After all precast prestressed beams have been erected, elevations of the top flanges of the beams shall be taken at intervals shown above. These elevations subtracted from the "Theoretical Grade Elevations Adjusted for Dead Load Deflections" shown on shts. 4 & 5 of 31, minus slab thickness, equals the fillet heights "t" above top flanges of beams.

DESIGNED	M.D.S.
CHECKED	S.M.R.
DRAWN	W.D.C.
CHECKED	M.D.S./S.M.R.

February 3, 2006
EXAMINED *Thomas J. Damagalki*
ENGINEER OF BRIDGE DESIGN
PASSED *Ralph E. Anderson*
ENGINEER OF BRIDGES AND STRUCTURES

TOP OF SLAB ELEVATIONS
F.A.P. ROUTE 627 - SECTION (1)BR
LASALLE COUNTY
STATION 26+61.50
STRUCTURE NO. 050-0242

