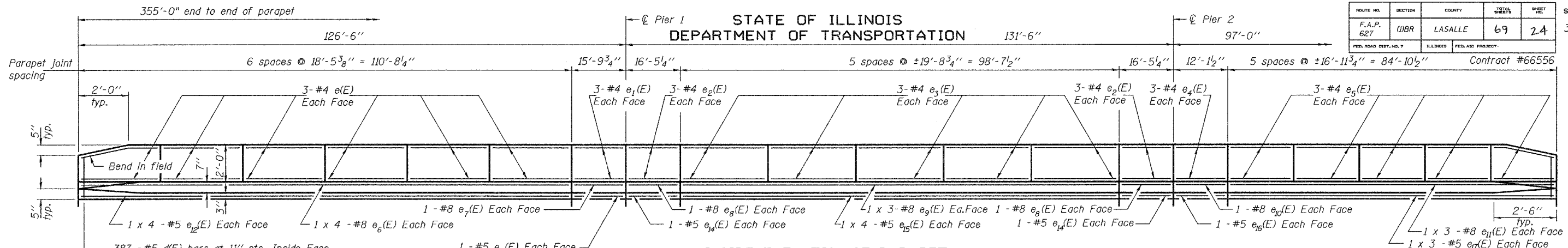


STATE OF ILLINOIS
DEPARTMENT OF TRANSPORTATION

ROUTE NO.	SECTION	COUNTY	TOTAL SHEETS	SHEET NO.
F.A.P. 627	(I)BR	LASALLE	69	24
FED. ROAD DIST. NO. 7	ILLINOIS	FED. AID PROJECT		

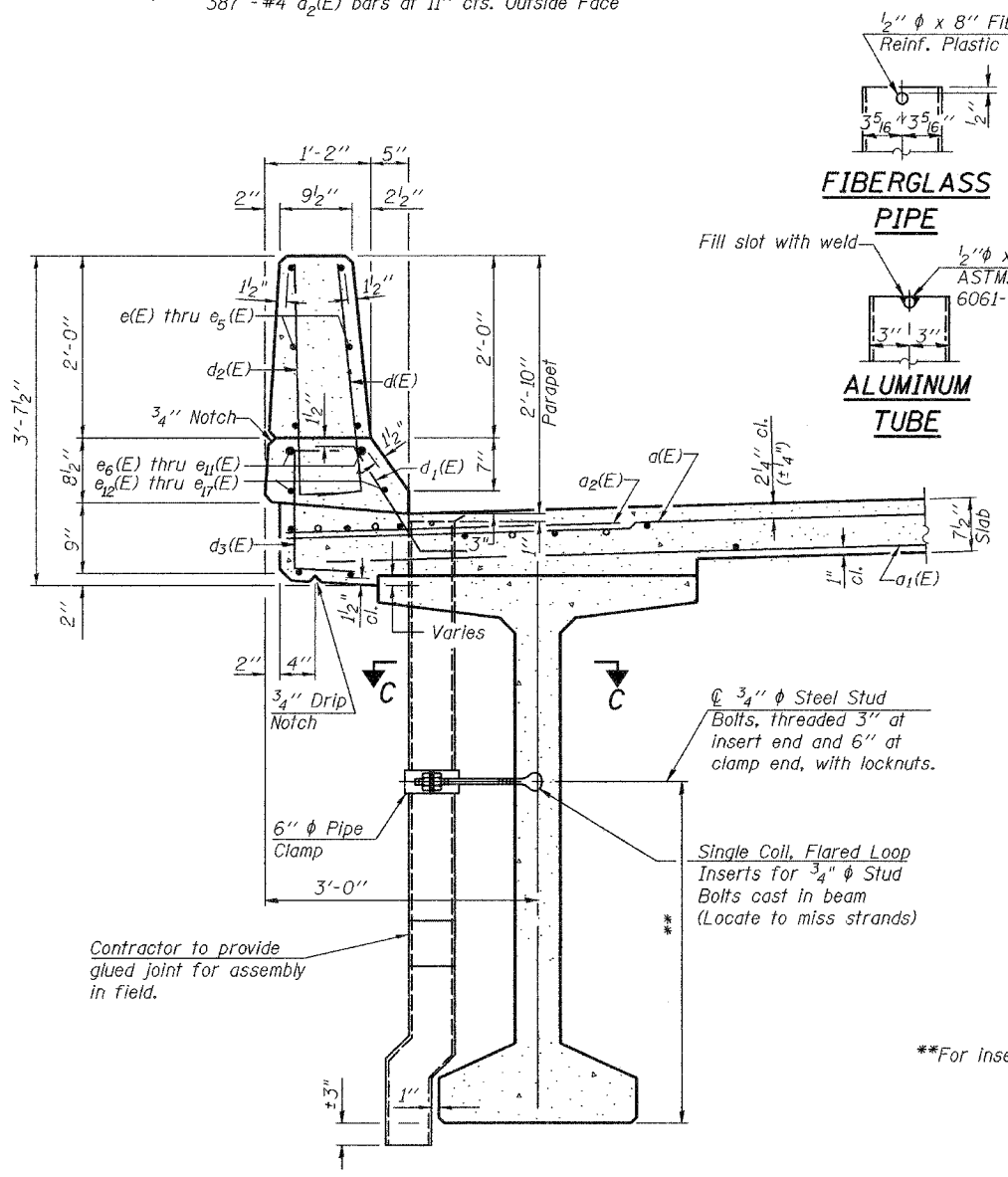
31 SHEETS



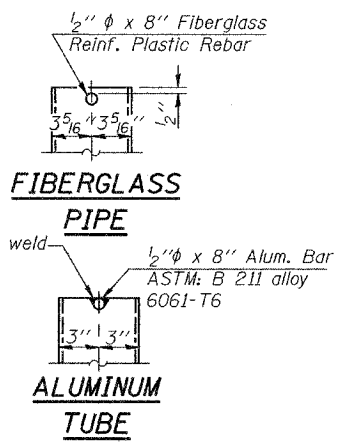
INSIDE ELEVATION OF PARAPET
(North parapet shown)

**SUPERSTRUCTURE
BILL OF MATERIAL**

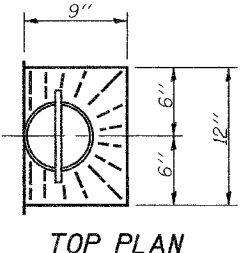
Bar	No.	Size	Length	Shape
a1(E)	427	#5	34'-8"	—
a2(E)	428	#6	6'-6"	—
a3(E)	48	#5	1'-6"	—
b1(E)	74	#7	31'-0"	—
b2(E)	468	#5	31'-7"	—
b3(E)	74	#7	29'-2"	—
b4(E)	74	#7	26'-5"	—
b5(E)	74	#7	24'-8"	—
d1(E)	774	#5	3'-0"	—
d2(E)	774	#4	3'-0"	—
d3(E)	776	#4	2'-6"	—
d4(E)	12	#5	2'-2"	—
e1(E)	72	#4	18'-2"	—
e2(E)	12	#4	15'-6"	—
e3(E)	24	#4	16'-2"	—
e4(E)	60	#4	19'-5"	—
e5(E)	12	#4	11'-10"	—
e6(E)	60	#4	16'-8"	—
e7(E)	16	#8	30'-2"	—
e8(E)	4	#8	15'-6"	—
e9(E)	8	#8	16'-2"	—
e10(E)	12	#8	35'-1"	—
e11(E)	4	#8	11'-10"	—
e12(E)	12	#8	30'-6"	—
e13(E)	16	#5	28'-10"	—
e14(E)	4	#5	15'-6"	—
e15(E)	8	#5	16'-2"	—
e16(E)	16	#5	25'-10"	—
e17(E)	4	#5	11'-10"	—
e18(E)	12	#5	29'-4"	—
m1(E)	4	#6	33'-5"	—
m2(E)	8	#6	34'-11"	—
m3(E)	36	#6	8'-8"	—
m4(E)	10	#6	3'-9"	—
m5(E)	4	#6	1'-10"	—
m6(E)	80	#4	5'-1"	—
m7(E)	12	#8	6'-2"	—
s1(E)	72	#5	6'-10"	—
s2(E)	42	#4	16'-2"	—
s3(E)	30	#4	15'-4"	—
s4(E)	20	#4	12'-7"	—
v(E)	68	#5	3'-4"	—
Reinforcement Bars, Epoxy Coated		Lbs.	101,020	
Concrete Superstructure		Cu. Yds.	459.9	



SECTION THRU PARAPET

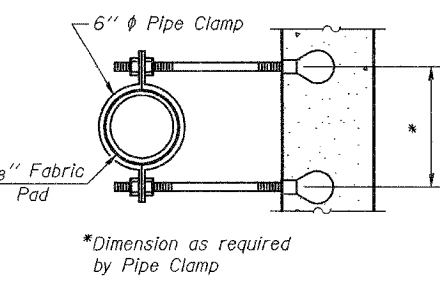


TOP PLAN
(Showing Aluminum Tube)

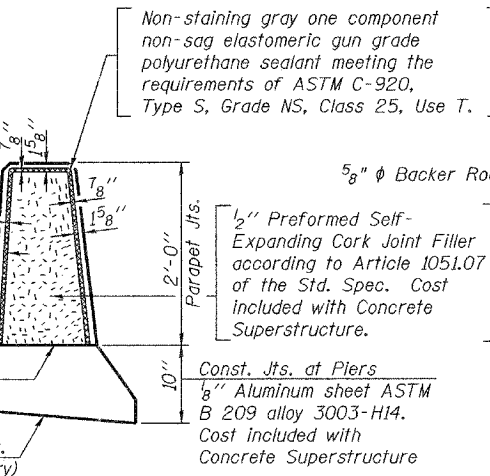


TOP PLAN

**For Insert locations See shits. 13-14 of 31.

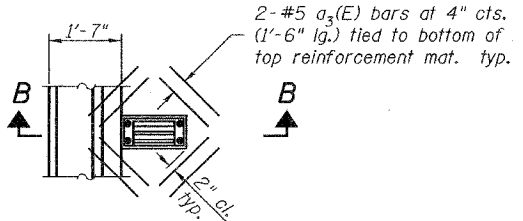


SECTION C-C



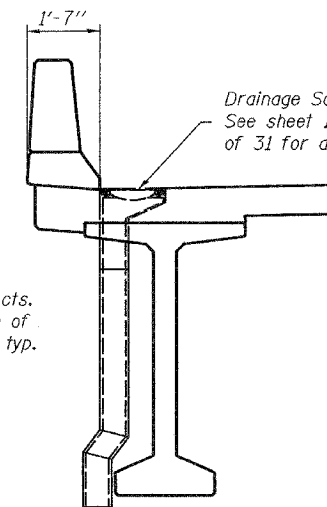
PARAPET JOINT DETAILS

Notes:
Fiberglass pipe shall conform to ASTM D2996, with short-time rupture strength hoop tensile stress of 30,000 p.s.i. minimum.
The exterior surfaces of fiberglass floor drains and downspouts shall be coated or pigmented by the manufacturer with a color that matches the concrete.
The clamping device and inserts shall be galvanized according to AASHTO M 232.



PLAN

Cut longitudinal reinforcement to clear drainage scuppers.



SECTION B-B

BARS d(E) & d2(E)
MINIMUM BAR LAP
(Parapet)
#5 bar = 1'-8"
#8 bar = 3'-5"

DESIGNED	M.D.S.
CHECKED	S.M.R.
DRAWN	W.D.C.
CHECKED	M.D.S./S.M.R.

February 3, 2006
EXAMINED *Thomas J. Domagalaki*
PASSED *Ralph E. Anderson*
ENGINEER OF BRIDGES AND STRUCTURES

SUPERSTRUCTURE DETAILS
F.A.P. ROUTE 627 - SECTION (I)BR
LASALLE COUNTY
STATION 26+61.50
STRUCTURE NO. 050-0242