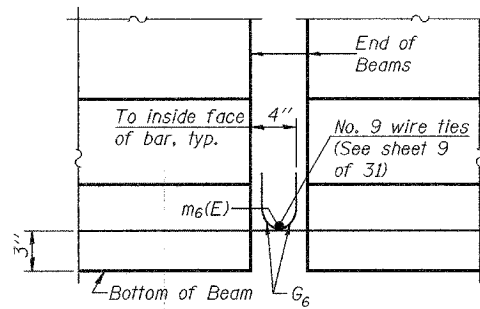


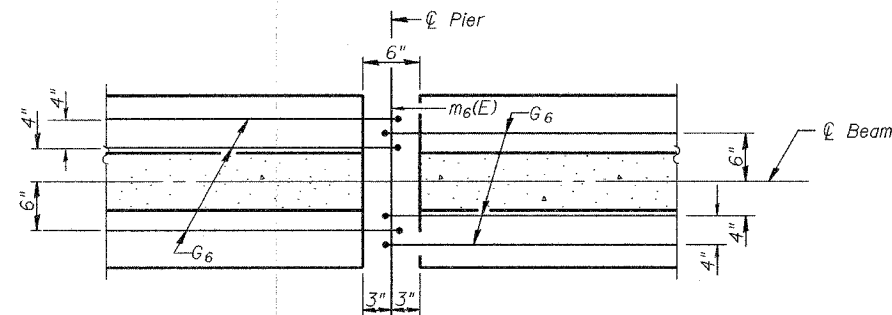
STATE OF ILLINOIS
DEPARTMENT OF TRANSPORTATION

ROUTE NO.	SECTION	COUNTY	SHEETS	SHEET NO.
F.A.P. 627	(WBR)	LASALLE	69 33	16
FED. ROAD DIST. NO. 7	ILLINOIS	FED. AID PROJECT		

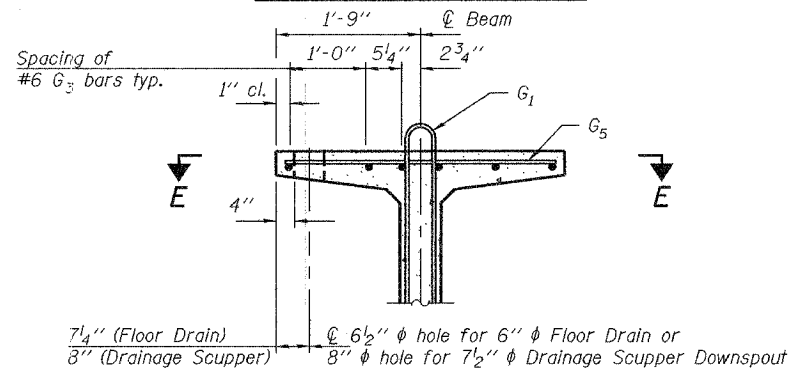
Contract #66556



ELEVATION OF BEAM AT PIER

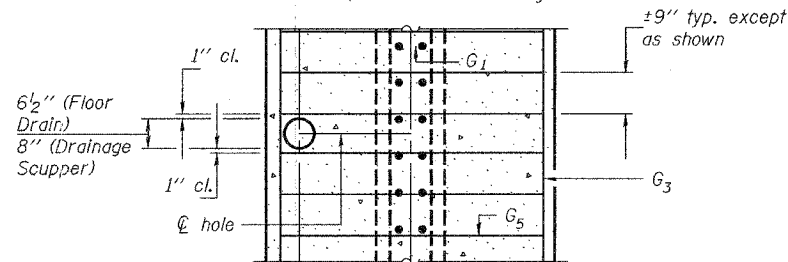


PLAN OF BEAM AT PIER



SECTION D-D

(Beam 1 shown, Beam 6 mirror image)

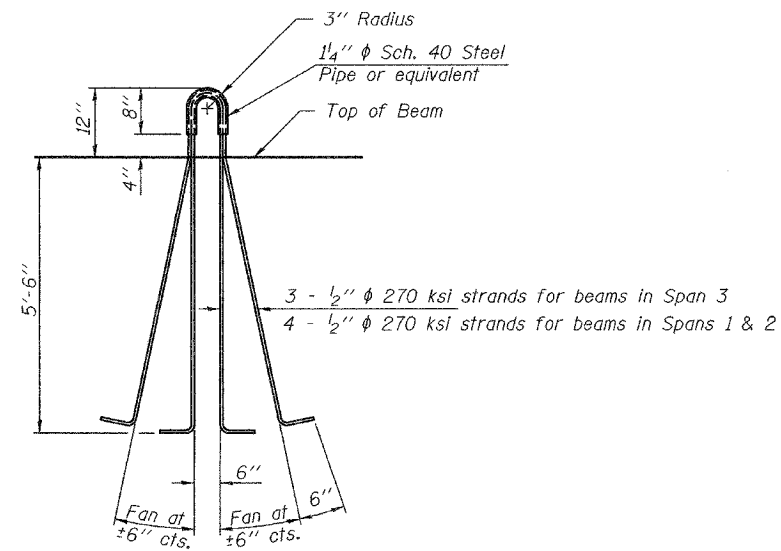


SECTION E-E

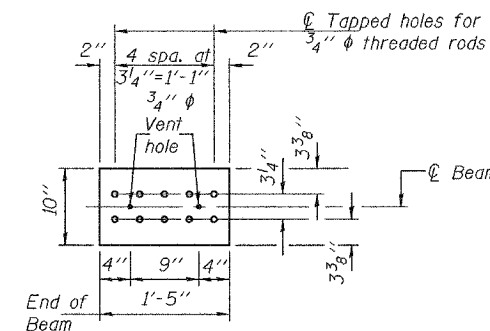
(Beam 1 shown, Beam 6 mirror image)

DESIGNED	M.D.S.
CHECKED	S.M.R.
DRAWN	W.D.C.
CHECKED	M.D.S./S.M.R.

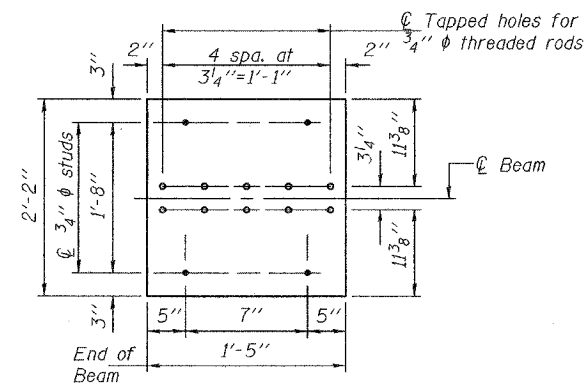
February 3, 2006
EXAMINED *Thomas J. Domagalaki*
PASSED *Ralph E. Anderson*
ENGINEER OF BRIDGE DESIGN
ENGINEER OF BRIDGES AND STRUCTURES



LIFTING LOOP DETAIL

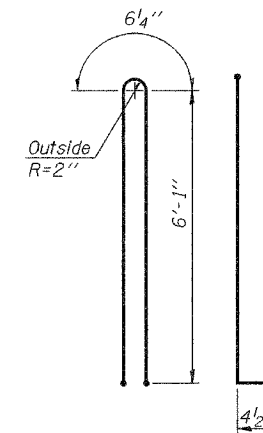


TOP PLATE

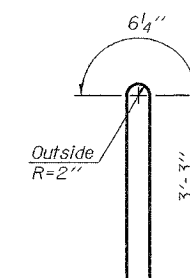


BOTTOM PLATE

See bearing details for pintle hole locations when required.



BAR G1



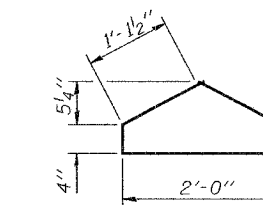
BAR G2

NOTES

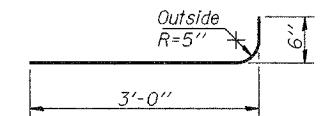
Inserts for 3/4" ϕ threaded dowel rods, when specified, are to be two strut, coil type for interior beams and single coil, flared loop type for exterior beams. Prestressing steel shall be uncoated high strength, low relaxation 7-wire strand, Grade 270. The nominal diameter shall be 1/2" and the nominal cross-sectional area shall be 0.153 sq. in. Non-prestressing steel shall conform to AASHTO designation M-31 or M 322, Grade 60. A minimum 2 1/2" ϕ lifting pin shall be used to engage the lifting loops during handling. Required release strength, f'cl, shall be 5,000 psi. Reinforcement bars designated (E) shall be epoxy coated. Cut G6 bars when necessary to maintain 1 1/2" clearance from projection of flange edge. The bottom plates and studs shall be galvanized according to AASHTO M11 and ASTM A385. Threaded rods shall be ASTM F 1554 Grade 55. The cut strands at each beam end shall be given two coats of zinc dust spray or paint meeting the requirements of ASTM A 780. The zinc dust spray or paint shall be applied before corrosion appears and allowed to dry according to the manufacturer's specifications prior to another coat of zinc. A concrete sealer meeting the requirements of Section 587 of the Standard Specifications shall be applied to all portions of the I-beam or Bulb-T beam, except the top surface of the top flange and the bottom surface of the bottom flange, starting at each beam end and extending out a distance of 72 inches. The sealer shall be applied after visible crack growth has subsided. This work shall be performed by the producer and included with the cost of the beam. Holes for drainage scupper downspout and floor drain to be cored in field after beams have been set and lateral bracing attached. Any exposed reinforcement shall be painted with an aluminum epoxy-mastic paint, cost included with Furnishing & Erecting Precast Prestressed Concrete Bulb-T Beams, 72". Prior to pouring of deck, floor drains and drainage scuppers shall be grouted into beam using non-shrink grout. Cost included with Furnishing & Erecting Precast Prestressed Concrete Bulb-T Beams, 72".

Holes for drainage scupper downspout and floor drain to be cored in field after beams have been set and lateral bracing attached. Any exposed reinforcement shall be painted with an aluminum epoxy-mastic paint, cost included with Furnishing & Erecting Precast Prestressed Concrete Bulb-T Beams, 72".

Prior to pouring of deck, floor drains and drainage scuppers shall be grouted into beam using non-shrink grout. Cost included with Furnishing & Erecting Precast Prestressed Concrete Bulb-T Beams, 72".



BAR G4



BAR G6

BILL OF MATERIAL

Item	Unit	Total
Furnishing and Erecting Precast Prestressed Concrete Bulb T-Beams, 72"	Ft.	2,118

72" PPC BULB T-BEAM DETAILS
F.A.P. ROUTE 627 - SECTION (WBR)
LASALLE COUNTY
STATION 26+61.50
STRUCTURE NO. 050-0242