

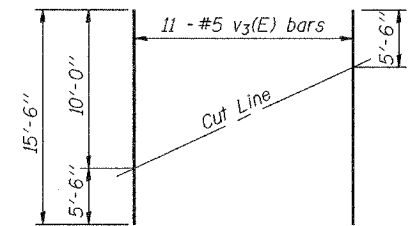
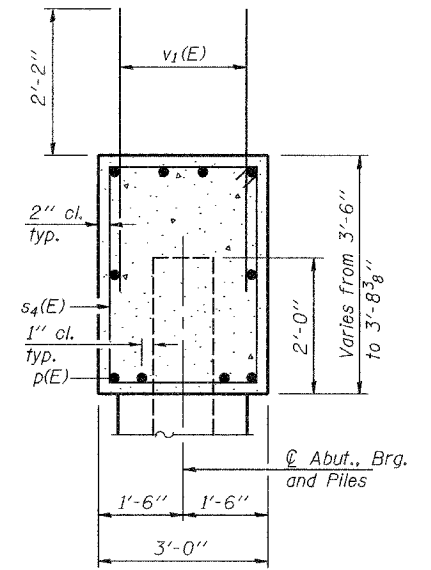
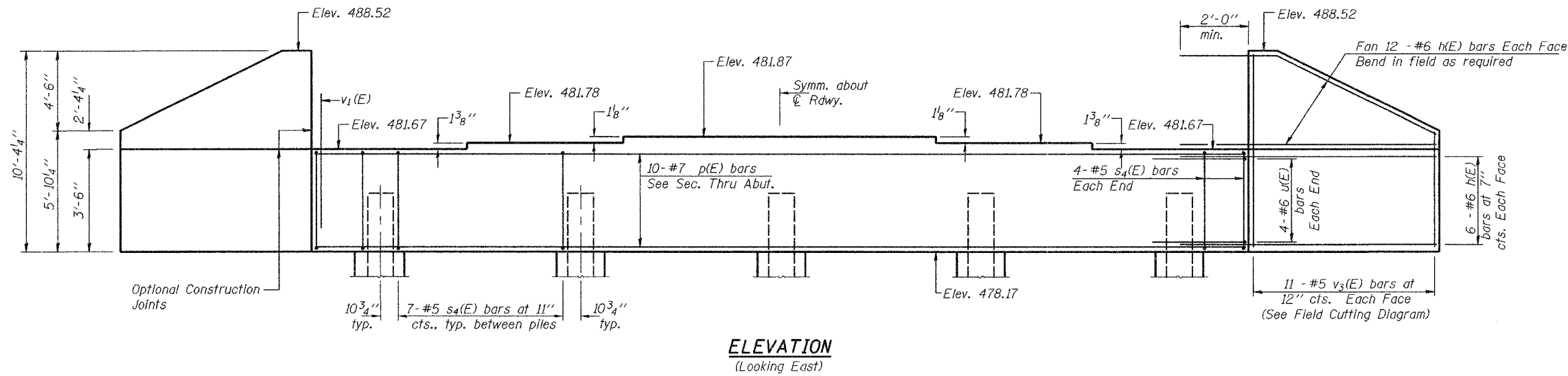
Notes: Four steps monolithically with cap.
Reinforcement bars designated (E)
shall be epoxy coated.

STATE OF ILLINOIS
DEPARTMENT OF TRANSPORTATION

ROUTE NO.	SECTION	COUNTY	SHEETS	SHEET NO.
F.A.P. 627	(JBR)	LASALLE	69	36
FED. ROAD DIST. NO. 7	ILLINOIS	FED. AID PROJECT		

SHEET NO. 19
31 SHEETS

Contract #66556



FIELD CUTTING DIAGRAM
Order v3(E) full length. Cut as shown and use remainder of bars in opposite face.

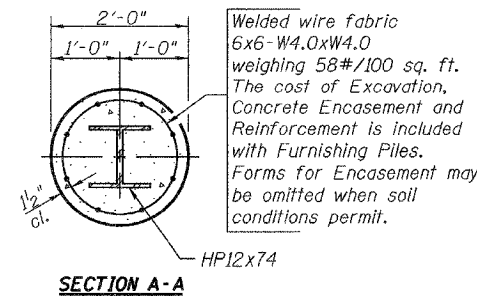
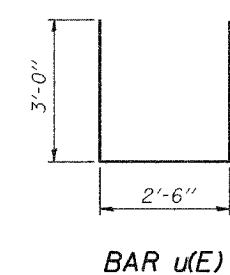
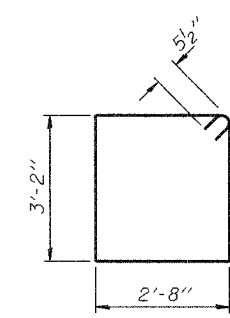
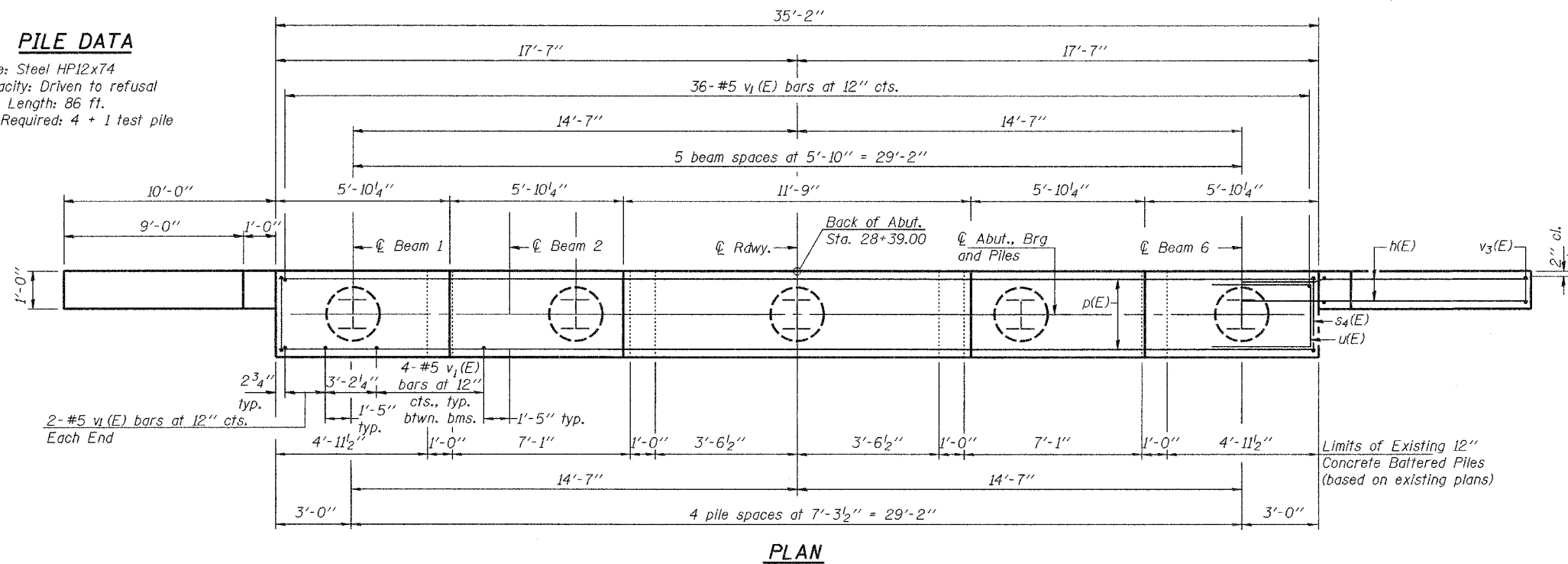
BILL OF MATERIAL

Bar	No.	Size	Length	Shape
h(E)	72	#6	13'-0"	—
p(E)	10	#7	34'-11"	—
s4(E)	36	#5	12'-7"	□
u(E)	8	#6	8'-6"	—
v1(E)	60	#5	4'-4"	—
v3(E)	22	#5	15'-6"	—
Concrete Structures		Cu. Yd.	20.2	
Reinforcement Bars, Epoxy Coated		Pound	3,320	
Structure Excavation		Cu. Yd.	45	
Driving Steel Piles		Foot	344	
Test Pile Steel HP12x74		Each	1	
Furnishing Steel Piles HP12x74		Foot	344	

EAST ABUTMENT
F.A.P. ROUTE 627 - SECTION (JBR)
LASALLE COUNTY
STATION 26+61.50
STRUCTURE NO. 050-0242

PILE DATA

Type: Steel HP12x74
Capacity: Driven to refusal
Est. Length: 86 ft.
No. Required: 4 + 1 test pile



DESIGNED	M.D.S.
CHECKED	S.M.R.
DRAWN	W.D.C.
CHECKED	M.D.S./S.M.R.

February 3, 2006
EXAMINED *Thomas J. Domagala*
PASSED *Ralph E. Anderson*
ENGINEER OF BRIDGE DESIGN
ENGINEER OF BRIDGES AND STRUCTURES