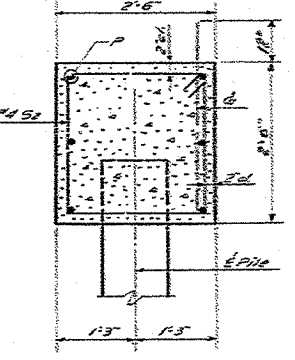
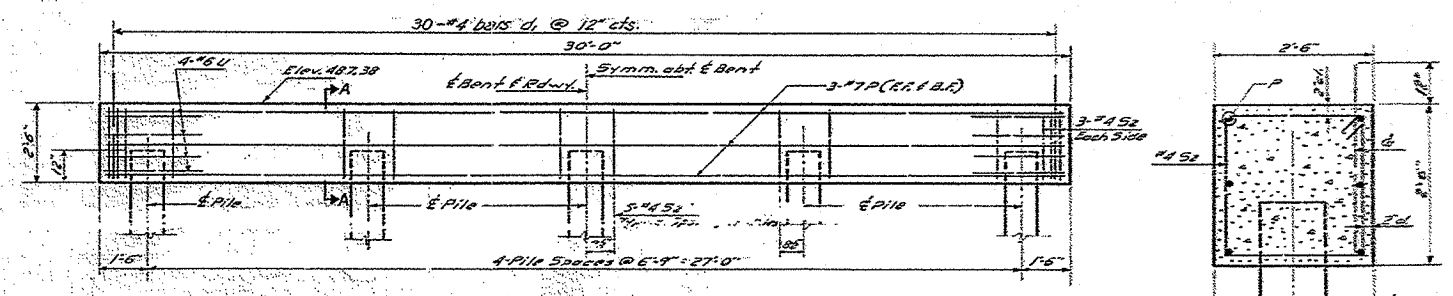
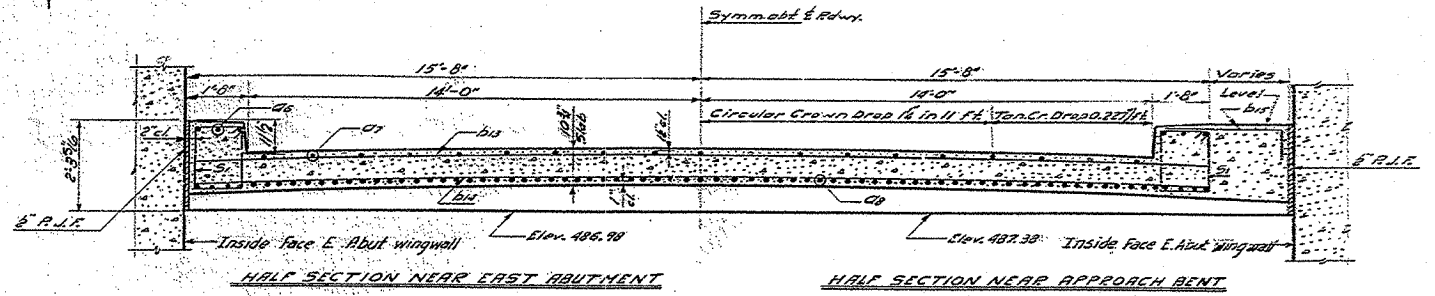
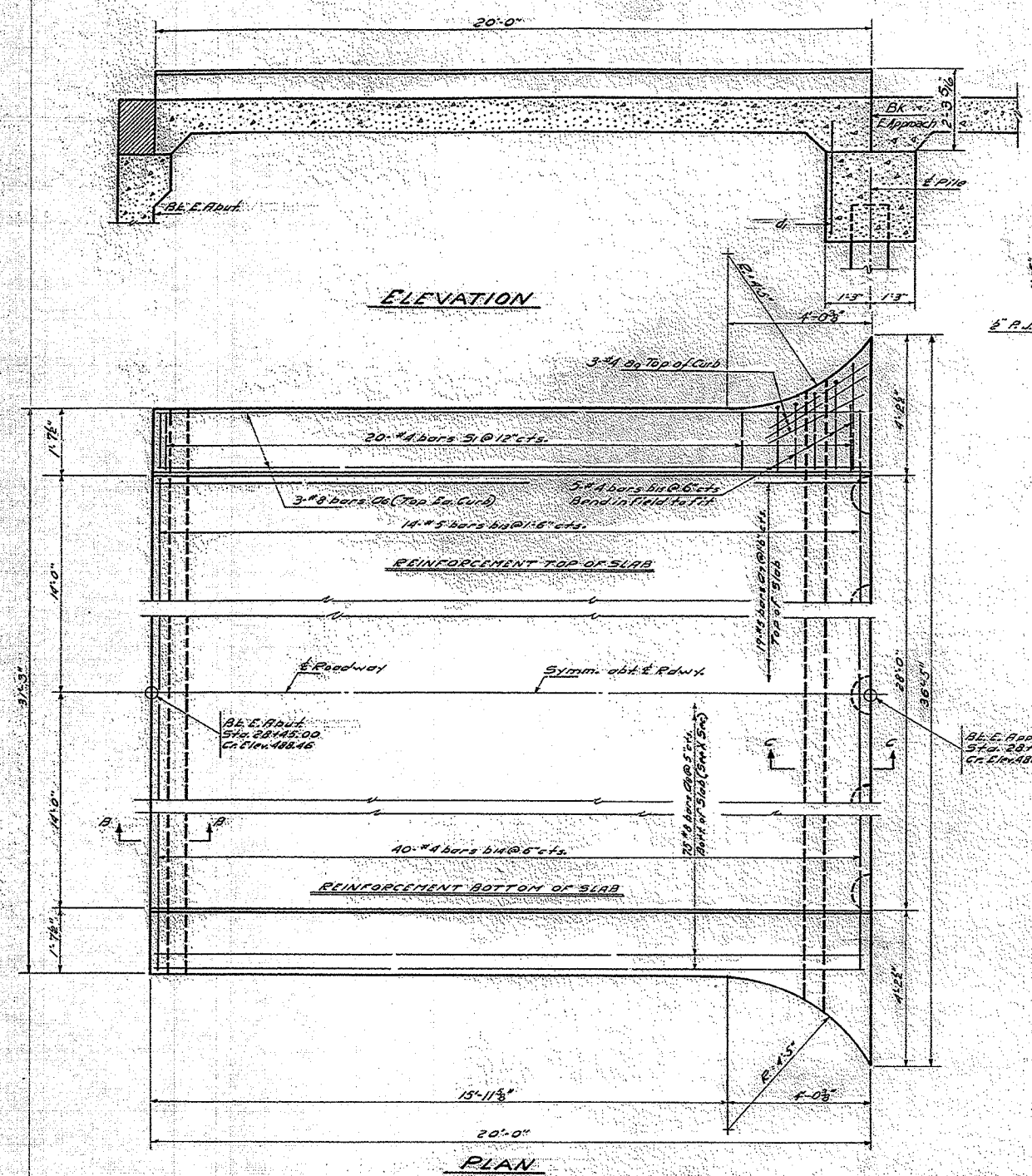


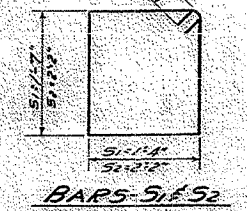
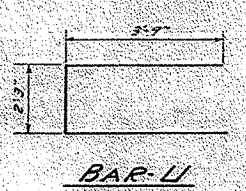
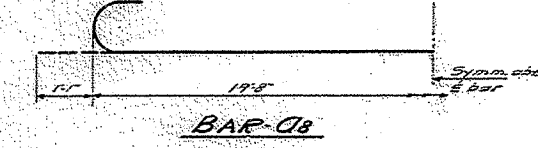
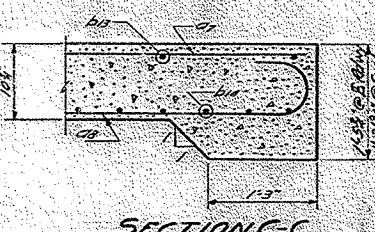
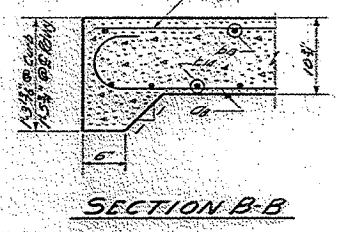
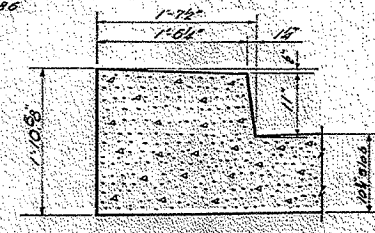
F.A.P. RTE.	SECTION	COUNTY	TOTAL SHEETS	SHEET NO.
627	1BR	LASALLE	69	52
STA.		TO STA.		
FED. ROAD DIST. NO.	ILLINOIS	FED. AID PROJECT		

STATE OF ILLINOIS
DEPARTMENT OF PUBLIC WORKS & BUILDINGS
DIVISION OF HIGHWAYS



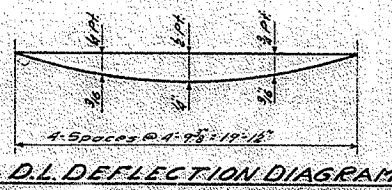
PILE DATA

Type 12' Concrete
No. Required 5
Capacity 20 Tons
Estimated Length 60 ft.



BILL OF MATERIAL

BAR	NO.	SIZE	LENGTH	SHAPE
C6	6	#2	19'-9"	
C7	19	#5	19'-9"	
C8	75	#8	21'-10"	(C)
C9	6	#4	3'-6"	
b1	18	#5	31'-0"	
b4	30	#4	31'-0"	
b5	10	#4	3'-2"	
d	30	#2	3'-4"	
P	6	#7	29'-9"	
S1	40	#4	5'-7"	
S2	26	#4	9'-5"	
U	8	#6	9'-5"	
Class X Concrete		Cu. Yds.		31.4
Reinforcement Bars		Lbs.		7280
Concrete Piles		Ln Ft.		300



DESIGNED *J. Mansard*
CHECKED *Abraham K. El Beck*
DRAWN *C. W. Pelly*
CHECKED *A. K. B.*

EXAMINED *May 13 19 59*
PASSED *R. L. Bast...*
APPROVED *R. L. Bast...*

APPROACH SLAB
E.A.R.T. & SEC. 18-R
LA SALLE COUNTY
STATION 25 +60

PLOT DATE 9/12/2005
FILE NAME
USER NAME