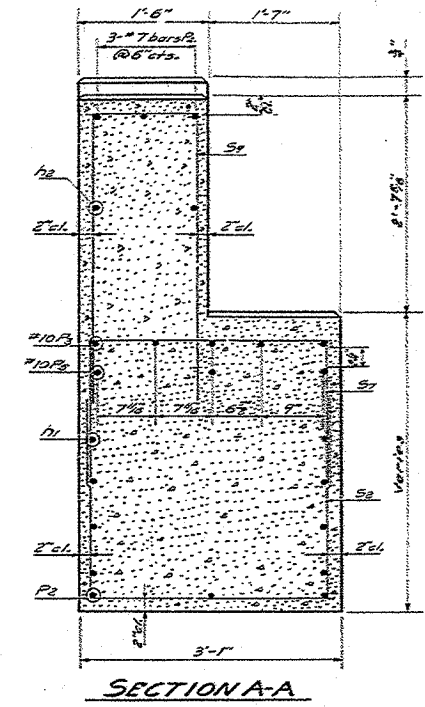
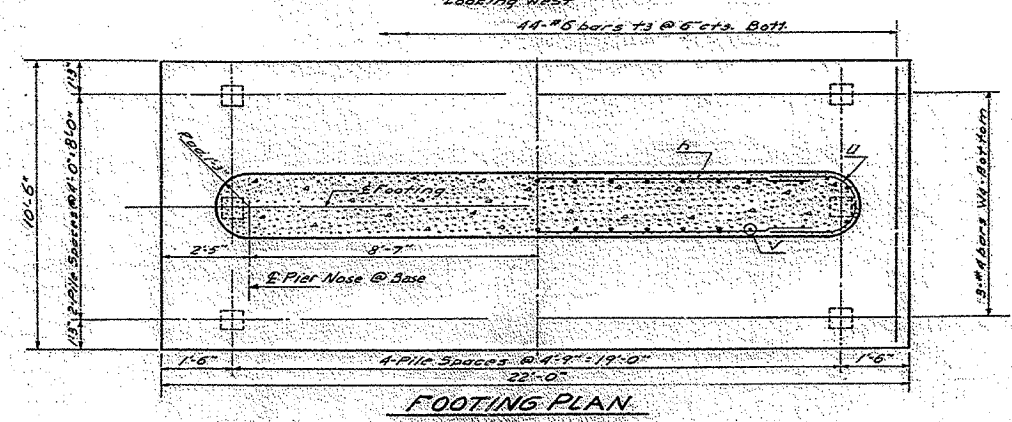
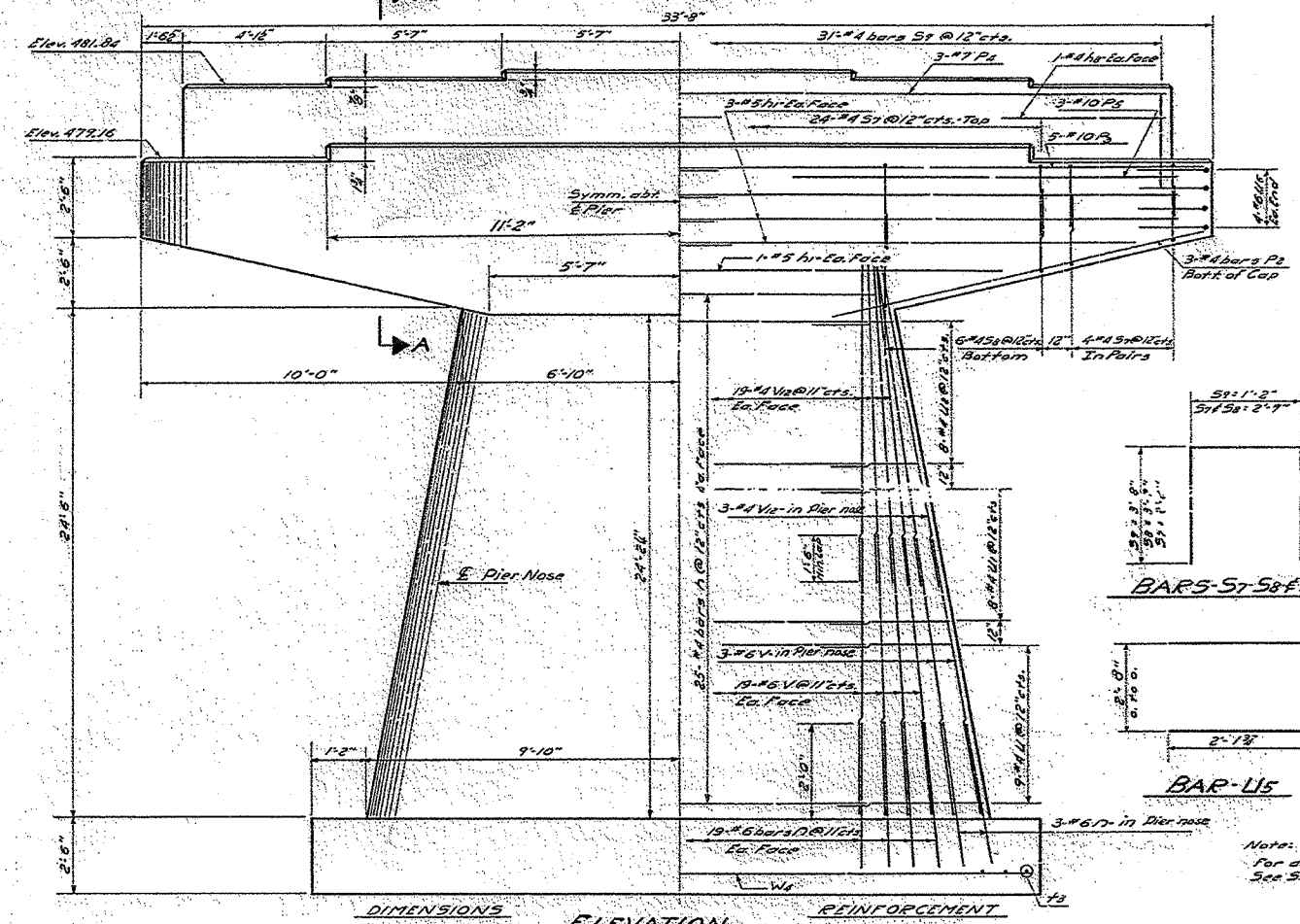
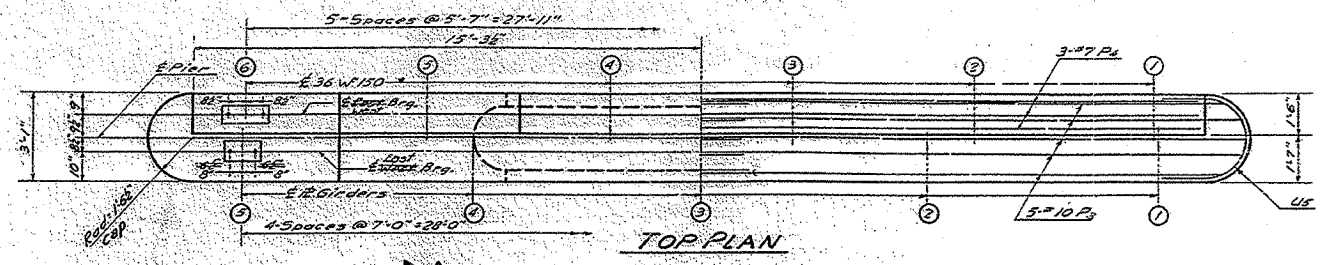
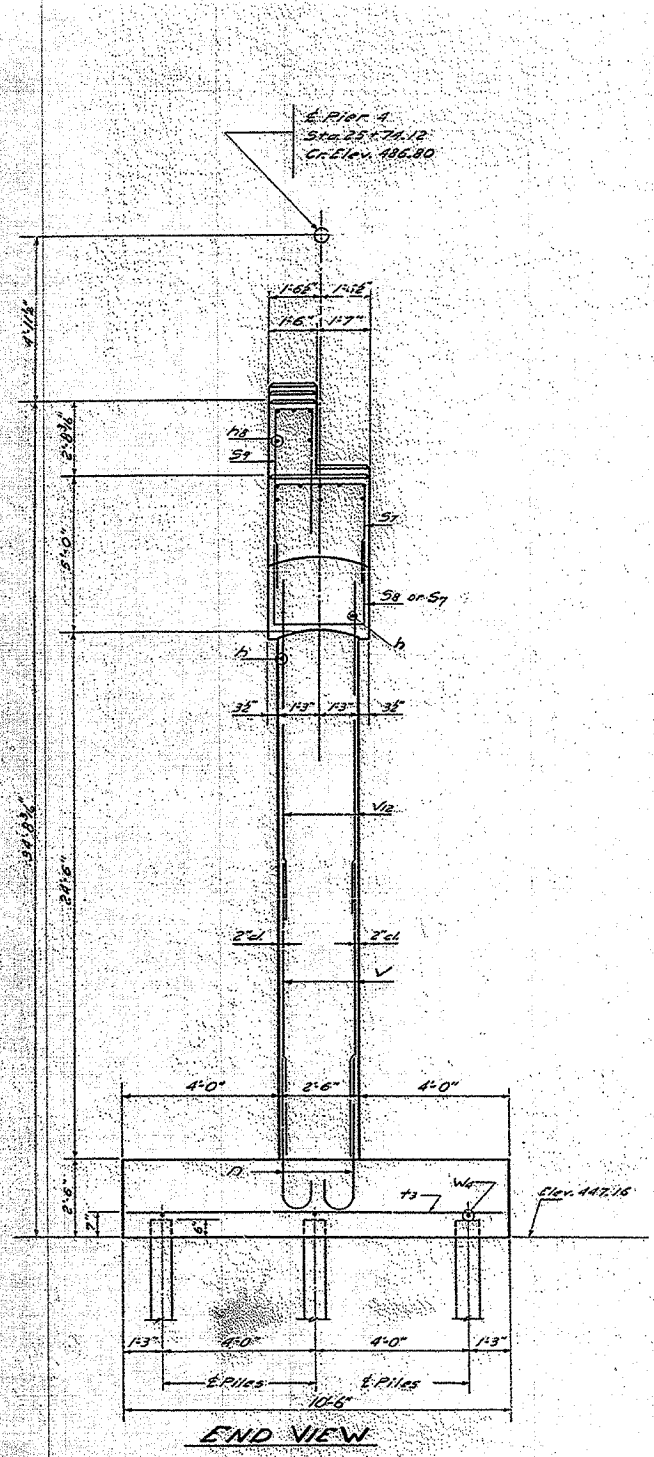


F.A.P. NO.	SECTION	COUNTY	TOTAL SHEETS	SHEET NO.
627	1BR	LASALLE	69	55
STA.		TO STA.		
FED. ROAD DIST. NO.		ILLINOIS	FED. AID PROJECT	

STATE OF ILLINOIS
DEPARTMENT OF PUBLIC WORKS & BUILDINGS
DIVISION OF HIGHWAYS



BILL OF MATERIAL

BAR NO	SIZE	LENGTH	SHAPE
h	50	#4	11'-2"
h1	14	#5	15'-0"
h2	2	#4	30'-3"
n	44	#6	4'-6" C
P2	6	#4	12'-0"
P3	10	#10	18'-3"
P4	3	#7	30'-3"
P5	6	#10	18'-6"
S7	40	#4	7'-1"
S8	12	#4	9'-11"
S9	31	#4	8'-6"
t3	44	#6	10'-0"
U	18	#4	11'-7"
U1	15	#6	9'-7"
U2	15	#6	7'-7"
U3	8	#6	8'-6"
V	44	#6	15'-0"
V2	44	#4	13'-6"
W	3	#4	21'-6"
Class X Concrete Cu. Yds. 728			
Reinforcement Bars Lbs. 520			
12" Concrete Piles Lin. Ft. 350			
Test Piles-12" Concrete Ea. 1			

PILE DATA

Type: 12" Concrete
No. Piled: 15
Capacity: 31 Tons
Est. Length: 25 Ft
Test Pile: 1

DESIGNED: J. J. ...
CHECKED: A. P. ...
DRAWN: G. W. ...
CHECKED: A. P. ...

EXAMINED: ...
APPROVED: ...

MAY 12 1959

PIER 4
P.A.P. 8-SEC. 1B-R
LA SALLE COUNTY
STATION 25+60

EXISTING STRUCTURE

PLOT DATE: 5/12/59
PLOT SCALE: AS SHOWN
USER NAME: ...