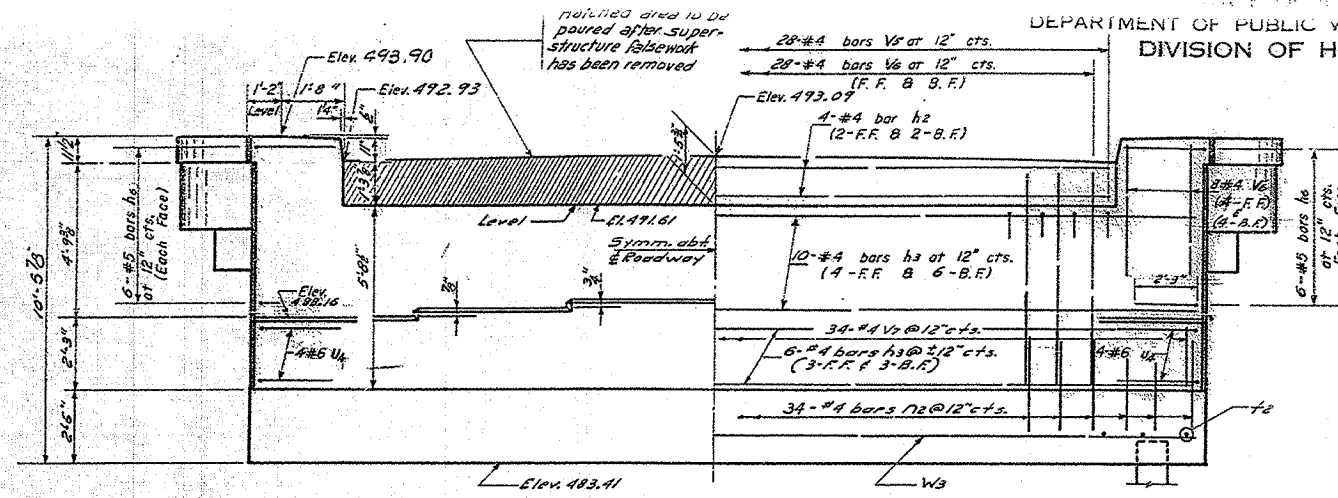
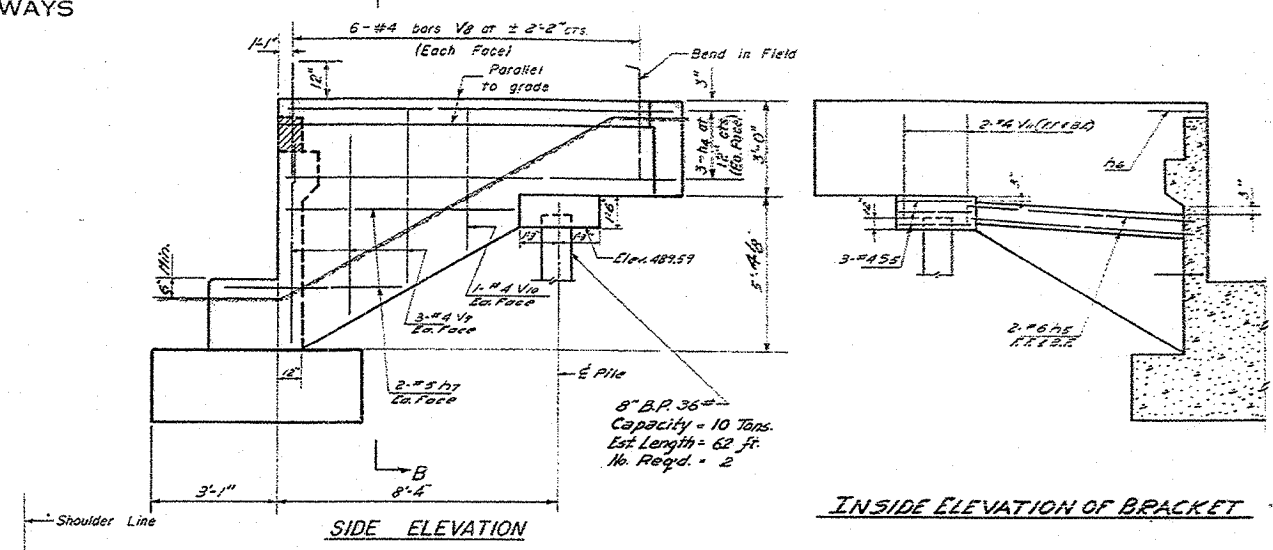


F.A.P. RTE.	SECTION	COUNTY	TOTAL SHEETS	SHEET NO.
627	1BR	LASALLE	6A	57
STA.		TO STA.		
FED. ROAD DIST. NO.		ILLINOIS FED. AID PROJECT		

DEPARTMENT OF PUBLIC WORKS & BUILDINGS
DIVISION OF HIGHWAYS

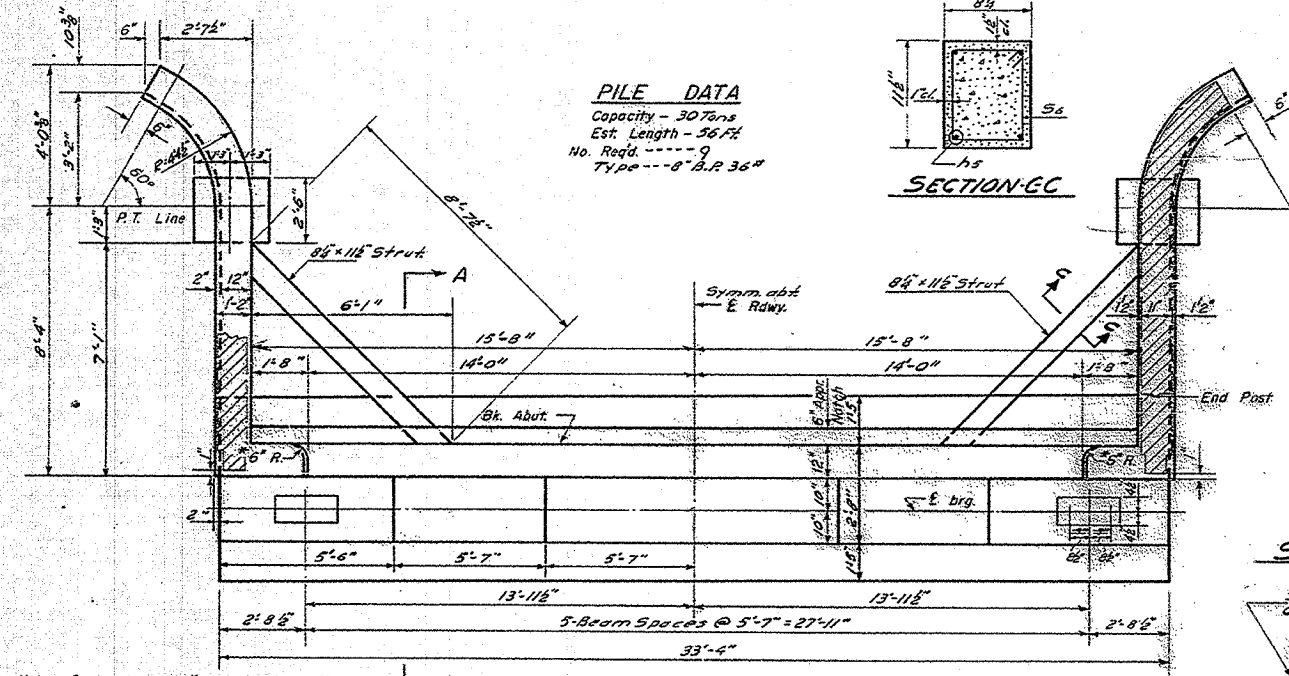


ELEVATION
At Right Angles to E Rowy.

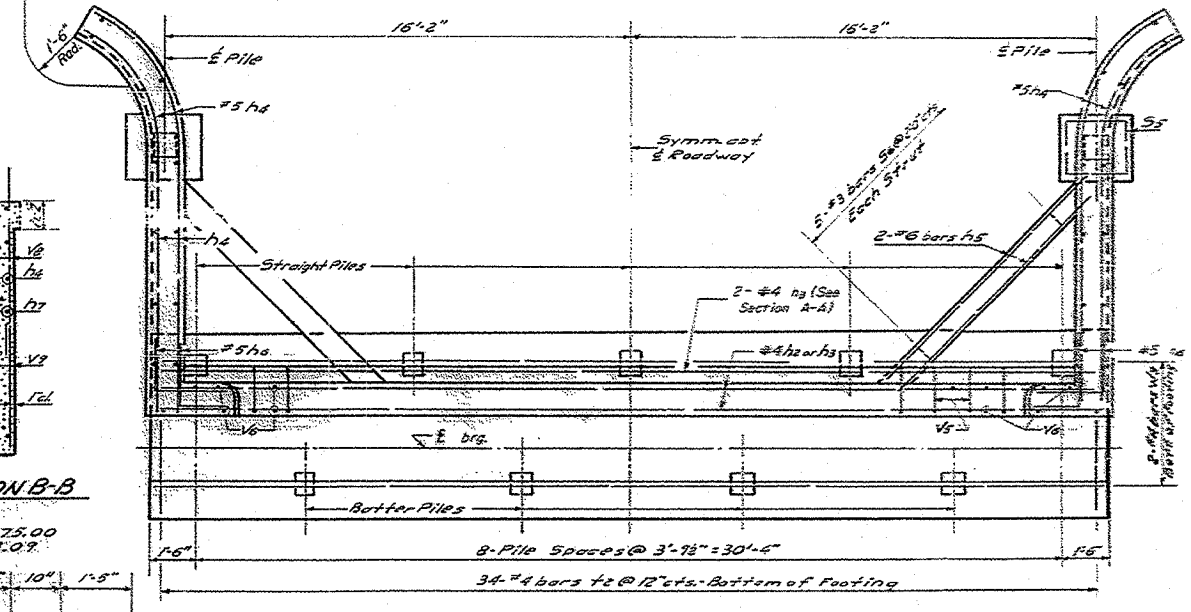


SIDE ELEVATION

INSIDE ELEVATION OF BRACKET

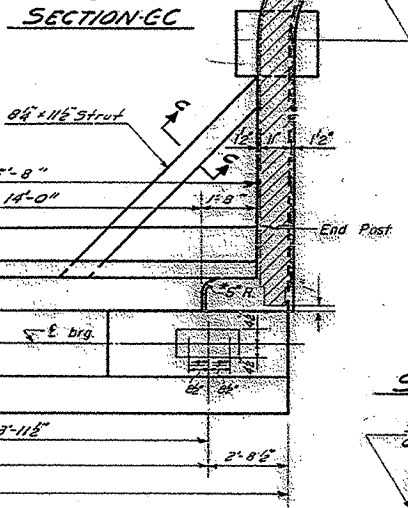


PLAN OF ABUTMENT
Dimensions



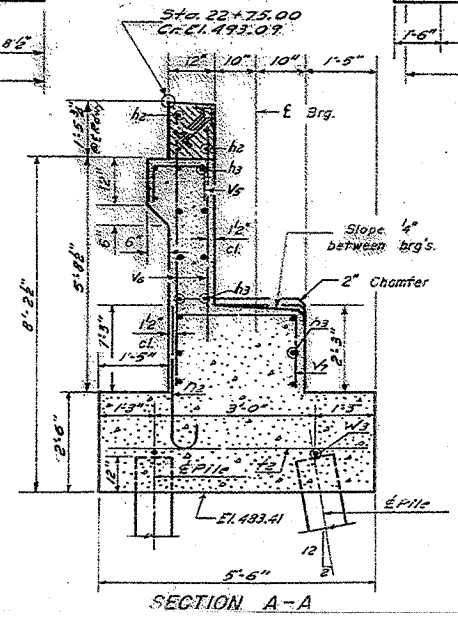
PLAN OF ABUTMENT
Reinforcement & Pile Spacing

PILE DATA
Capacity - 30 Tons
Est. Length - 36 Ft.
No. Req'd - 9
Type - 8" B.P. 36"



SECTION C-C

SECTION B-B



SECTION A-A

BILL OF REINFORCEMENT

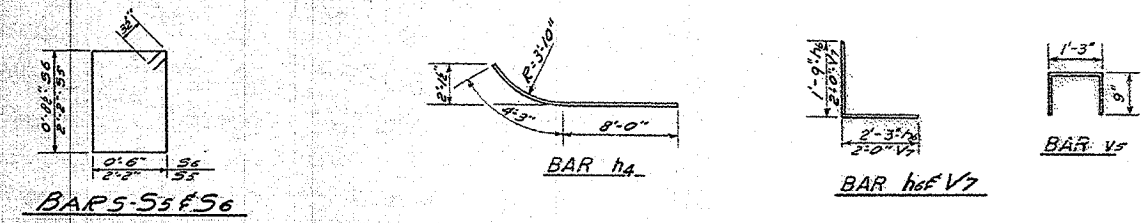
Bar	No.	Size	Length	Shape	Bar	No.	Size	Length	Shape
h2	4	#4	27'-9"	—	V5	20	#4	2'-9"	┘
h3	16	#4	33'-0"	—	V6	56	#4	7'-0"	—
h4	12	#5	12'-3"	—	V7	36	#4	4'-0"	—
h5	8	#6	9'-6"	—	V8	24	#4	5'-10"	—
h6	24	#5	4'-0"	L	V9	12	#4	5'-0"	—
h7	8	#5	6'-6"	—	V10	4	#6	4'-6"	—
h72	36	#4	3'-1"	C	V11	8	#4	4'-3"	—
S5	6	#4	9'-3"	□	W2	2	#4	33'-0"	—
S10	10	#3	3'-0"	□					
h2	34	#4	5'-2"	—					
h4	8	#6	8'-0"	—					

BILL OF MATERIAL

Item	Unit	Quantity
Class X Concrete	Cu Yd	347
Reinforcement Bars	Lb	1760
Steel Piles (8BP36")	Lin. Ft.	629

WEST ABUTMENT
F.A.P. RT. 8-SEC. 18-R
LA SALLE COUNTY
STATION 25+60

Note: Contractor shall construct curb without radius when a curb & gutter are to be used on bridge approaches (See Road Plans).



DESIGNED: *Manaval*
CHECKED: *Abraham G. Beck*
DRAWN: *W. A. Sausonoff*
CHECKED: *Abraham G. Beck*

EXAMINED: *May 12 1959*
PASSED: *Edmund*
APPROVED: *R.R. Brantberg*

PLOT DATE = 9/12/2005
FILE NAME = FILEL
PLOT SCALE = SCALES
USER NAME = MSERS