

F.A. RTE.	SECTION	COUNTY	TOTAL SHEETS	SHEET NO.
5952	G-BR-1	GRUNDY	50	1

STATE OF ILLINOIS
DEPARTMENT OF TRANSPORTATION
DIVISION OF HIGHWAYS

**PROPOSED
HIGHWAY PLANS**

FAU ROUTE 5952 /SBI 7 (U.S. RTE. 6)
SECTION G-BR-1
PROJECT BRM-5952 (002)
GRUNDY COUNTY

C - 93 - 069 - 05

PROJECT DESCRIPTION

BRIDGE AND APPROACH ROADWAY RECONSTRUCTION
WITH PROVISIONS FOR FUTURE RECONSTRUCTION
OF ADJACENT ROADWAY

EXIST. S.N. 032-0081

PROP. S.N. 032-0108

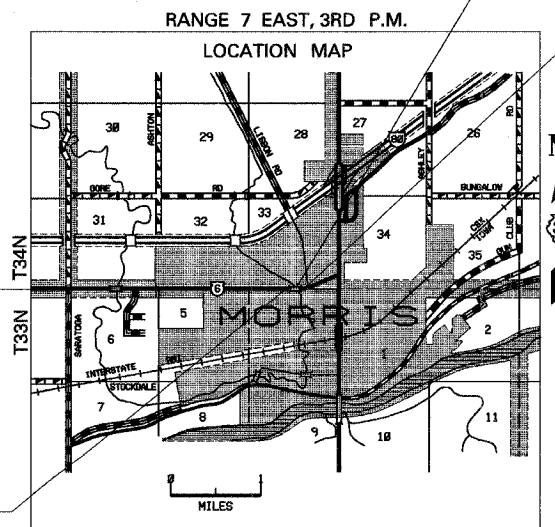
PROJECT LENGTH: 147.50'
EXISTING SUPERSTRUCTURE
AND SUBSTRUCTURE
REPLACEMENT

END IMPROVEMENT

STA 560+46.21

BEGIN IMPROVEMENT

STA 554+56.21



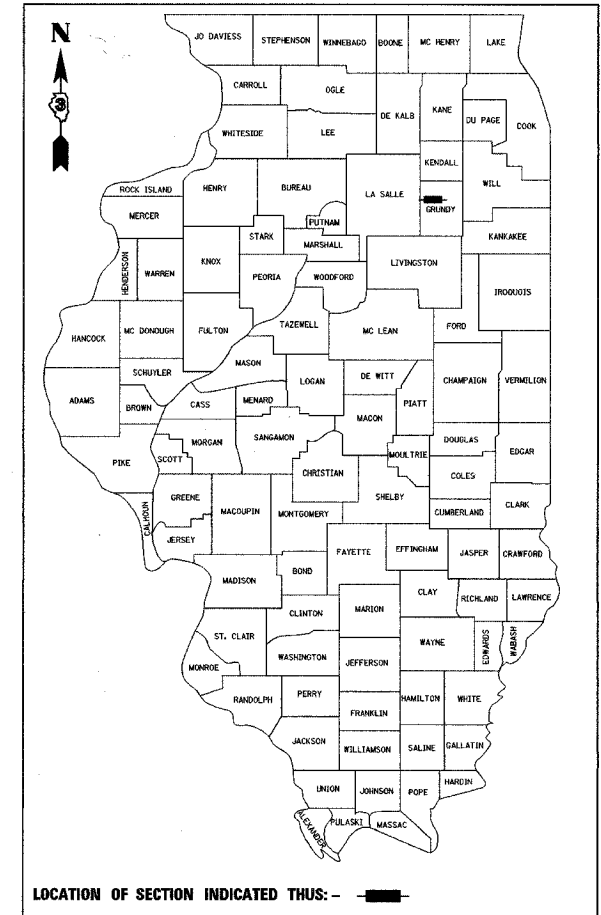
GROSS LENGTH = 590 FT. = 0.11 MI.
NET LENGTH = 442.5 FT. = 0.08 MI.



DATE: November 4, 2005

LICENSE EXPIRES: November 30, 2005

BOWMAN, BARRETT
& ASSOCIATES INC.
CONSULTING ENGINEERS
130 E. RANDOLPH STREET
CHICAGO, ILLINOIS 60601
JOB NO. 541



LOCATION OF SECTION INDICATED THUS: ———

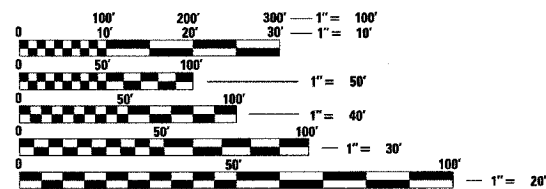
MINOR ARTERIAL
2003 ADT 15,600
14,500 P.C. 850 S.U. 250 M.U.

STATE OF ILLINOIS
DEPARTMENT OF TRANSPORTATION
DIVISION OF HIGHWAYS

SUBMITTED November 4, 2005
Gregory Mounts
DEPUTY DIRECTOR OF HIGHWAYS, REGION ENGINEER
February 3, 2006
Mike Hine
ENGINEER OF DESIGN AND ENVIRONMENT
February 3, 2006
Milton R. Sees
DIRECTOR OF HIGHWAYS, CHIEF ENGINEER

**PRINTED BY THE AUTHORITY
OF THE STATE OF ILLINOIS**

FOR INDEX OF SHEETS, SEE SHEET NO. 2



FULL SIZE PLANS HAVE BEEN PREPARED USING STANDARD
ENGINEERING SCALES. REDUCED SIZED PLANS WILL NOT
CONFORM TO STANDARD SCALES. IN MAKING MEASUREMENTS
ON REDUCED PLANS, THE ABOVE SCALES MAY BE USED.

MICROFILMED _____
REEL NUMBER _____
AWARDED _____
RESIDENT ENGINEER _____
AS BUILT CHANGES WERE MADE
ON THE FOLLOWING SHEETS _____

J.U.L.I.E.
JOINT UTILITY LOCATION INFORMATION FOR EXCAVATION
1-800-892-0123

DISTRICT 3 NO. (815) 434-6131

PROJECT ENGINEER: R. POWELL
UNIT CHIEF: B. DUNCAN
TOWNSHIP: MORRIS /SARATOGA
CONTRACT NO. 66563