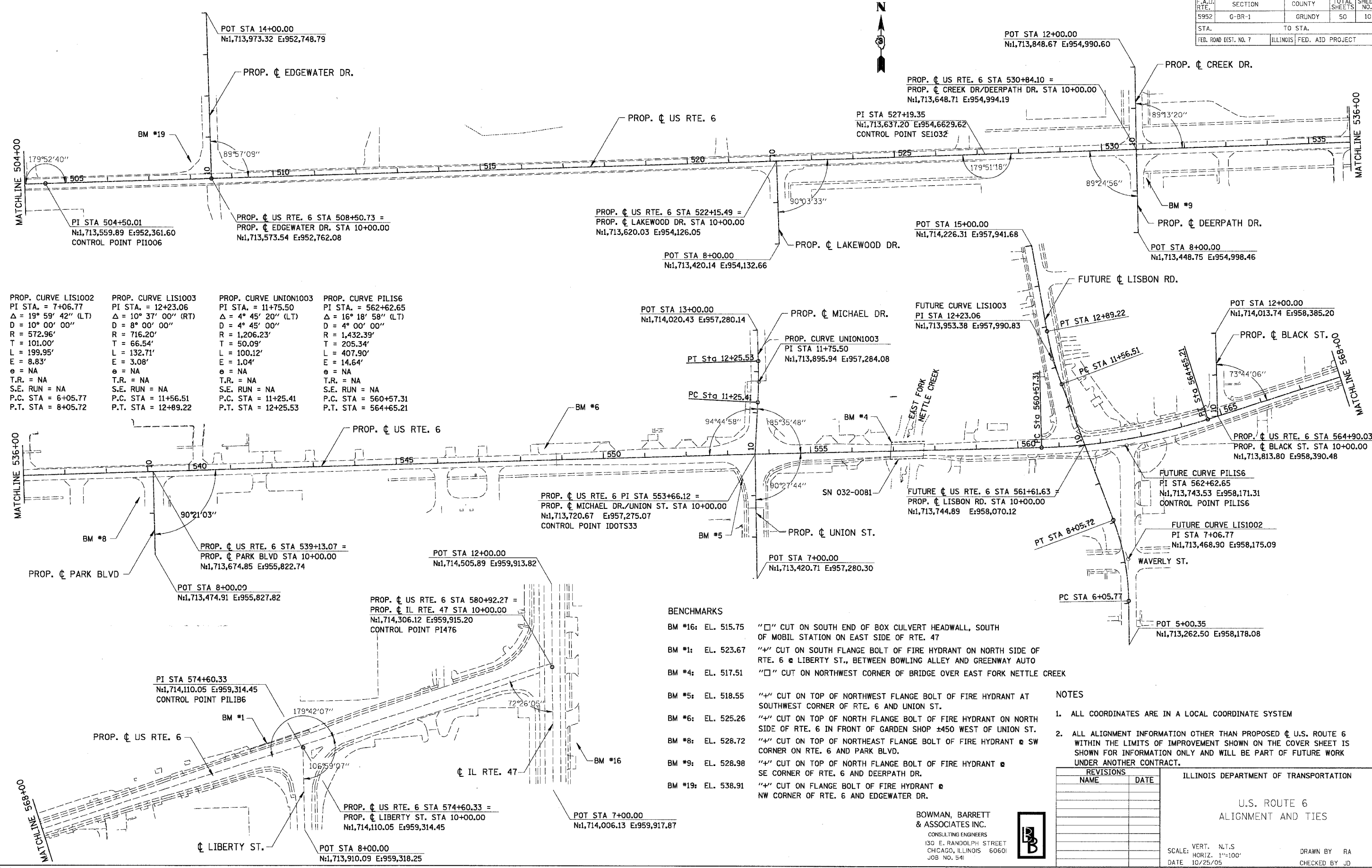


F.A.D. RT. NO.	SECTION	COUNTY	TOTAL SHEETS	SHEET NO.
5952	G-BR-1	GRUNDY	50	10
STA. TO STA.		TO STA.		
FED. ROAD DIST. NO. 7		ILLINOIS FED. AID PROJECT		



PROP. CURVE LIS1002 PI STA. = 7+06.77 Δ = 19° 59' 42" (LT) D = 10° 00' 00" R = 572.96' T = 101.00' L = 199.95' E = 8.83' e = NA T.R. = NA S.E. RUN = NA P.C. STA = 6+05.77 P.T. STA = 8+05.72	PROP. CURVE LIS1003 PI STA. = 12+23.06 Δ = 10° 37' 00" (RT) D = 8° 00' 00" R = 716.20' T = 66.54' L = 132.71' E = 3.08' e = NA T.R. = NA S.E. RUN = NA P.C. STA = 11+56.51 P.T. STA = 12+89.22	PROP. CURVE UNION1003 PI STA. = 11+75.50 Δ = 4° 45' 20" (LT) D = 4° 45' 00" R = 1,206.23' T = 50.09' L = 100.12' E = 1.04' e = NA T.R. = NA S.E. RUN = NA P.C. STA = 11+25.41 P.T. STA = 12+25.53	PROP. CURVE PILIS6 PI STA. = 562+62.65 Δ = 16° 18' 58" (LT) D = 4° 00' 00" R = 1,432.39' T = 205.34' L = 407.90' E = 14.64' e = NA T.R. = NA S.E. RUN = NA P.C. STA = 560+57.31 P.T. STA = 564+65.21
-----------------------------------------------------------------------------------------------------------------------------------------------------------------------------------------------------------------------------------	------------------------------------------------------------------------------------------------------------------------------------------------------------------------------------------------------------------------------------	---------------------------------------------------------------------------------------------------------------------------------------------------------------------------------------------------------------------------------------	------------------------------------------------------------------------------------------------------------------------------------------------------------------------------------------------------------------------------------------

- BENCHMARKS**
- BM *16: EL. 515.75 "□" CUT ON SOUTH END OF BOX CULVERT HEADWALL, SOUTH OF MOBIL STATION ON EAST SIDE OF RTE. 47
 - BM *1: EL. 523.67 "4" CUT ON SOUTH FLANGE BOLT OF FIRE HYDRANT ON NORTH SIDE OF RTE. 6 @ LIBERTY ST., BETWEEN BOWLING ALLEY AND GREENWAY AUTO
 - BM *4: EL. 517.51 "□" CUT ON NORTHWEST CORNER OF BRIDGE OVER EAST FORK NETTLE CREEK
 - BM *5: EL. 518.55 "4" CUT ON TOP OF NORTHWEST FLANGE BOLT OF FIRE HYDRANT AT SOUTHWEST CORNER OF RTE. 6 AND UNION ST.
 - BM *6: EL. 525.26 "4" CUT ON TOP OF NORTH FLANGE BOLT OF FIRE HYDRANT ON NORTH SIDE OF RTE. 6 IN FRONT OF GARDEN SHOP ±450 WEST OF UNION ST.
 - BM *8: EL. 528.72 "4" CUT ON TOP OF NORTHEAST FLANGE BOLT OF FIRE HYDRANT @ SW CORNER ON RTE. 6 AND PARK BLVD.
 - BM *9: EL. 528.98 "4" CUT ON TOP OF NORTH FLANGE BOLT OF FIRE HYDRANT @ SE CORNER OF RTE. 6 AND DEERPETH DR.
 - BM *19: EL. 538.91 "4" CUT ON FLANGE BOLT OF FIRE HYDRANT @ NW CORNER OF RTE. 6 AND EDGEWATER DR.

- NOTES**
1. ALL COORDINATES ARE IN A LOCAL COORDINATE SYSTEM
 2. ALL ALIGNMENT INFORMATION OTHER THAN PROPOSED U.S. ROUTE 6 WITHIN THE LIMITS OF IMPROVEMENT SHOWN ON THE COVER SHEET IS SHOWN FOR INFORMATION ONLY AND WILL BE PART OF FUTURE WORK UNDER ANOTHER CONTRACT.

REVISIONS	
NAME	DATE

ILLINOIS DEPARTMENT OF TRANSPORTATION

U.S. ROUTE 6
ALIGNMENT AND TIES

SCALE: VERT. N.T.S.
HORIZ. 1"=100'
DATE 10/25/05

DRAWN BY RA
CHECKED BY JD

BOWMAN, BARRETT & ASSOCIATES INC.
CONSULTING ENGINEERS
130 E. RANDOLPH STREET
CHICAGO, ILLINOIS 60601
JOB NO. 541

