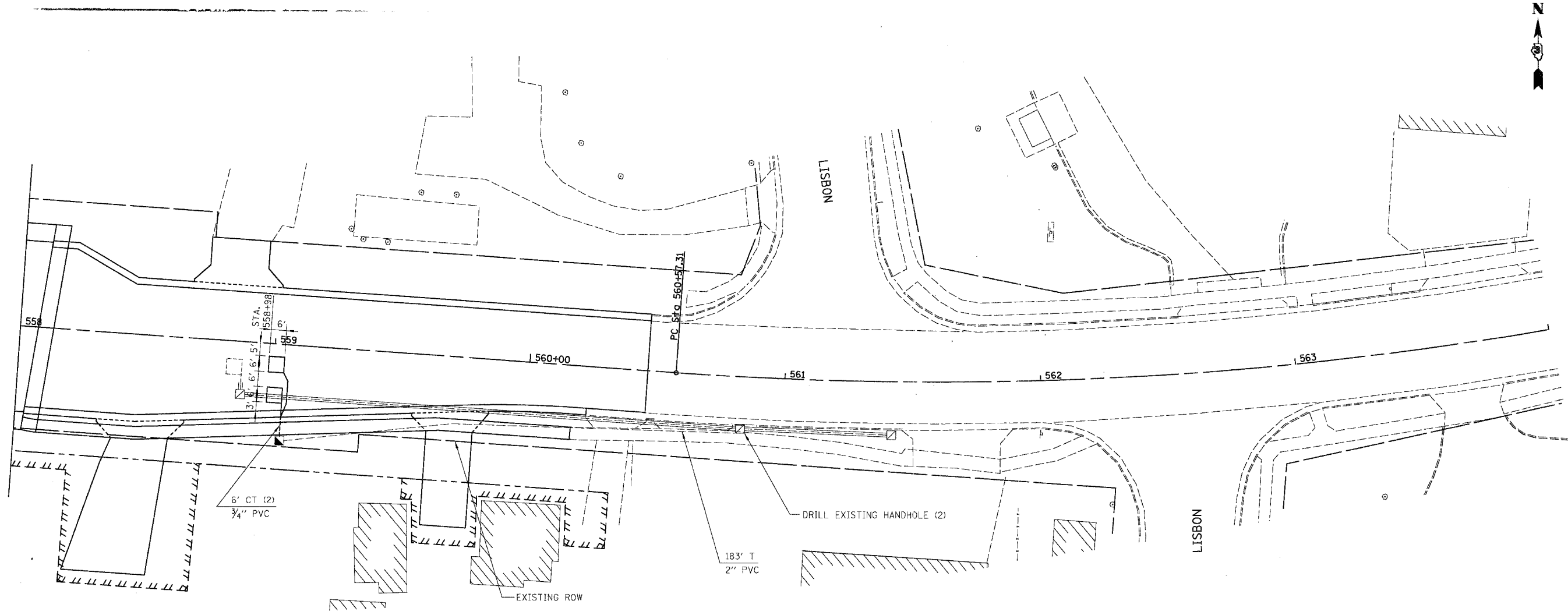


F.A.U. RTE.	SECTION	COUNTY	TOTAL SHEETS	SHEET NO.
5952	C-BR-1	GRUNDY	50	17
STA.		TO STA.		
FED. ROAD DIST. NO. 7		ILLINOIS FED. AID PROJECT		



SCHEDULE OF SIGNAL QUANTITIES

- 12 FOOT CONDUIT IN TRENCH, 3/4" DIA., PVC
- 163 FOOT CONDUIT IN TRENCH, 2" DIA., PVC
- 1 EACH CONCRETE HANDHOLE
- 189 FOOT TRENCH AND BACKFILL FOR ELECTRICAL WORK
- 195 FOOT ELECTRIC CABLE IN CONDUIT, LEAD-IN, NO. 14 1 PAIR
- 2 EACH DRILL EXISTING HANDHOLE
- 72 FOOT DETECTOR LOOP, TYPE 1
- 1 EACH MODIFY EXISTING CONTROLLER

NOTE: SPLICE NEW NO. 14 1 PAIR LEAD-IN WIRE ONTO EXISTING LEAD-IN WIRE AT HANDHOLE TO BE DRILLED.

MODIFY EXISTING CONTROLLER CONSISTS OF SEQUENCE OF OPERATION CHANGES AND LOOP DETECTOR INPUT CHANGES AS NOTED ON THE PLANS

REVISIONS	
NAME	DATE

ILLINOIS DEPARTMENT OF TRANSPORTATION

U.S. ROUTE 6
SIGNAL INSTALLATION
STAGE 1B

SCALE: VERT. NTS
HORIZ. 1" = 50'
DATE 10/25/05

DRAWN BY PK
CHECKED BY JM

EJM **EJM ENGINEERING, INC**
411 South Wells Street Suite 800
Chicago, Illinois 60607

10/25/2005 09:50:06 PM
m:\54\road\vol\66563\Est\Trr\Kvj\m\54\sig\p66563_17.dgn
default