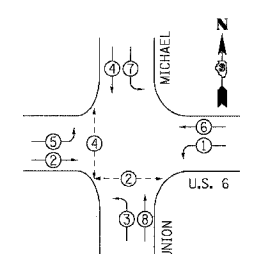
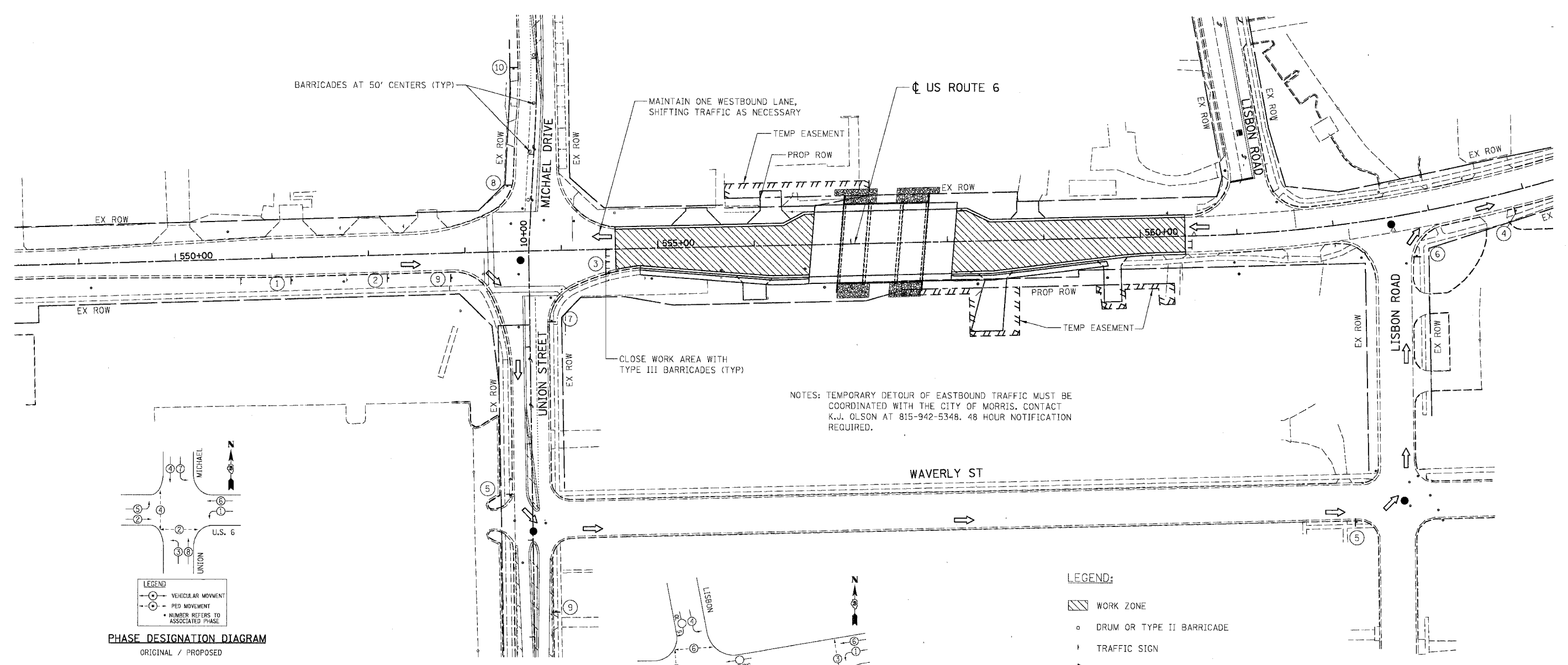
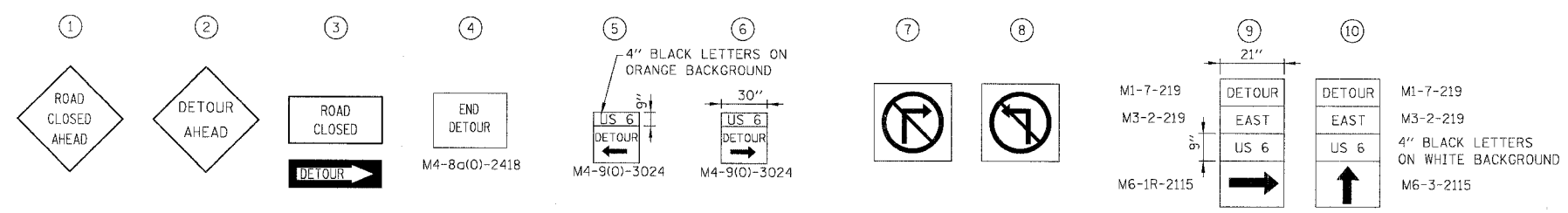
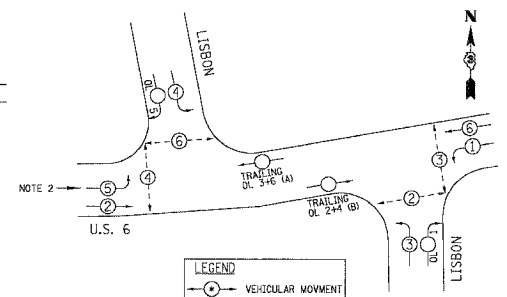


F.A.J. RTE.	SECTION	COUNTY	TOTAL SHEETS	SHEET NO.
5952	G-BR-1	GRUNDY	50	21
STA.	TO STA.			
FED. ROAD DIST. NO. 7	ILLINOIS	FED. AID PROJECT		



PHASE DESIGNATION DIAGRAM  
ORIGINAL / PROPOSED



PHASE DESIGNATION DIAGRAM  
ORIGINAL / PROPOSED

- LEGEND:
- WORK ZONE
  - DRUM OR TYPE II BARRICADE
  - TRAFFIC SIGN
  - TRAFFIC FLOW DIRECTION
  - FLAGGER
  - TYPE III BARRICADE

- TRAFFIC SIGNAL WORK
- WITH ONE WORKING DAY OR LESS, PUT BOTH SIGNALS ON FLASH AND USE FLAGMEN FOR TRAFFIC CONTROL.
  - AT THE CONCLUSION OF PHASE 3, RESTORE ALL PHASES AND DETECTORS TO THEIR ORIGINAL OPERATION AT BOTH LISBON ROAD AND UNION/MICHAEL.

REVISIONS	
NAME	DATE

BOWMAN, BARRETT & ASSOCIATES INC.  
CONSULTING ENGINEERS  
130 E. RANDOLPH STREET  
CHICAGO, ILLINOIS 60601  
JOB NO. 541



ILLINOIS DEPARTMENT OF TRANSPORTATION

U.S. ROUTE 6  
MAINTENANCE OF TRAFFIC  
STAGE 3

SCALE: VERT. NTS  
HORIZ. 1" = 50'

DATE 10/25/05

DRAWN BY JAM  
CHECKED BY DDM

10/25/2005 08:30:05 PM  
m:\541\cc\d\c\66563 East Fork\541mot13.dgn