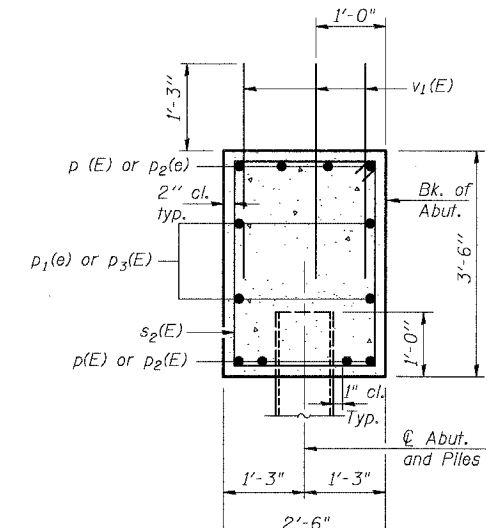
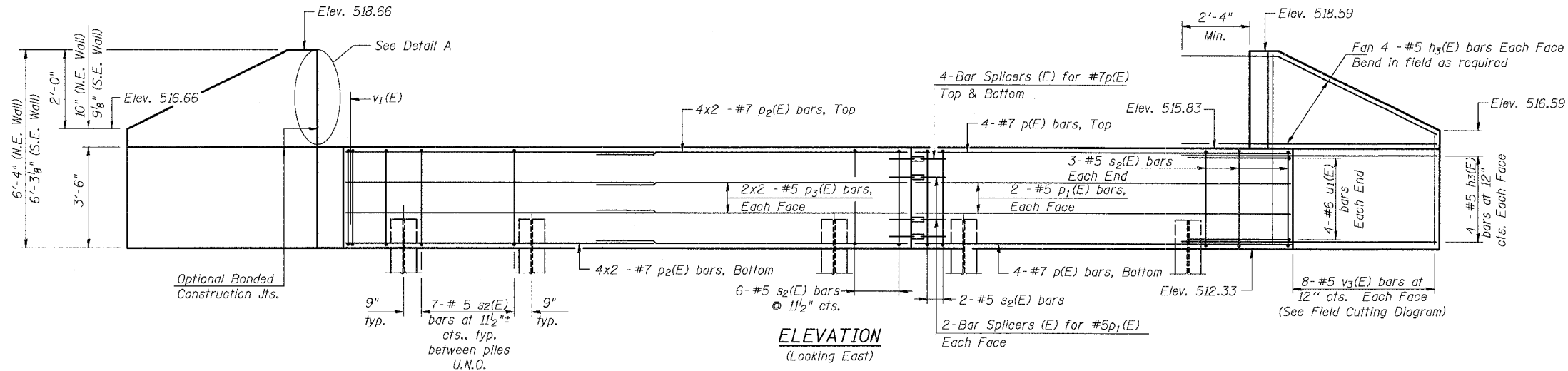


STATE OF ILLINOIS
DEPARTMENT OF TRANSPORTATION

ROUTE NO.	SECTION	COUNTY	TOTAL SHEETS	SHEET NO.	SHEET NO. 59
S.B.L.	①	GRUNDY	50	39	OF 514 SHEETS
F.A.U. NO.					
FED. ROAD DIST. NO. 7	ILLINOIS	FED. AID PROJECT			

① G-BR-1 66563



SEC. THRU ABUT.

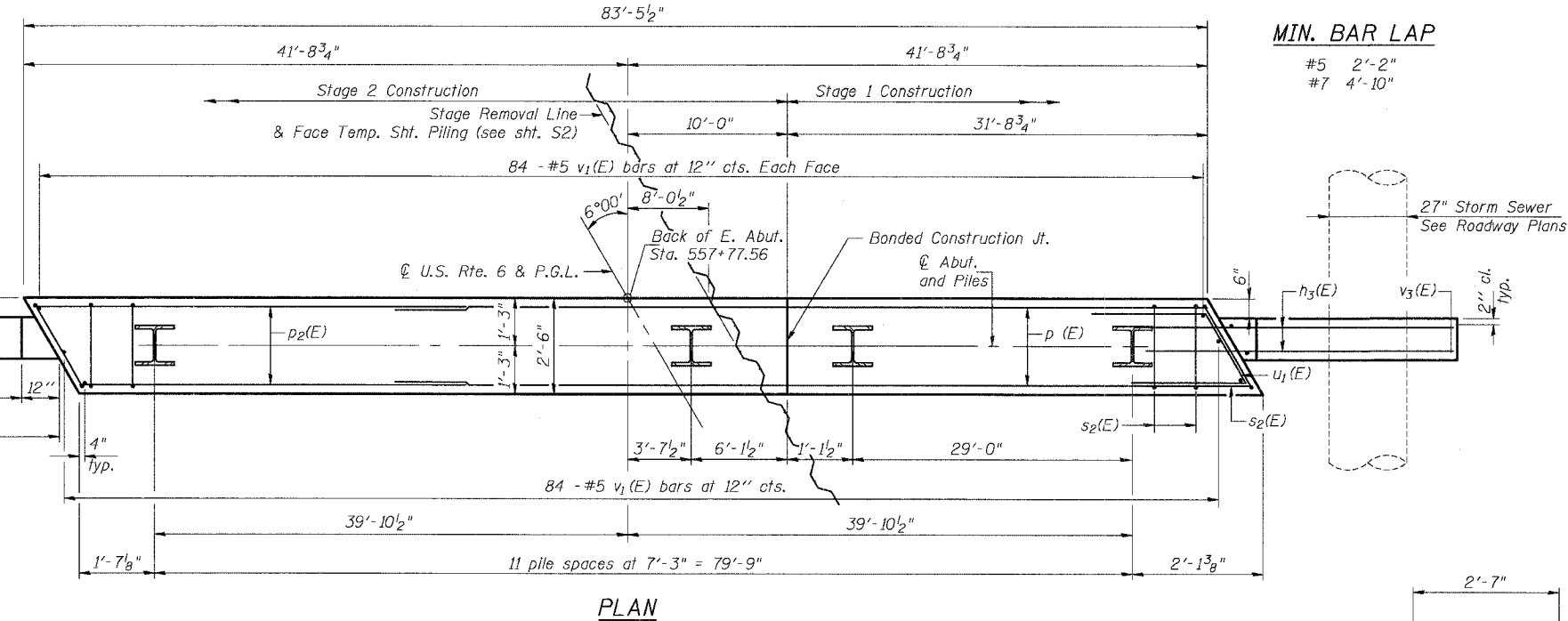
BILL OF MATERIAL

Bar	No.	Size	Length	Shape
h3(E)	32	# 5	9'-3"	
p(E)	8	# 7	31'-3"	
p1(E)	4	# 5	31'-3"	
p2(E)	16	# 7	28'-1"	
p3(E)	8	# 5	26'-9"	
s2(E)	84	# 5	11'-7"	□
u1(E)	8	# 6	7'-2"	▽
v1(E)	252	# 5	3'-5"	
v3(E)	16	# 5	10'-0"	
Concrete Structures				Cu. Yd. 29.8
Reinforcement Bars, Epoxy Coated				Pound 4270
Structure Excavation				Cu. Yd. 96
Furnishing Steel				Foot 372
Piles HP10x42				Foot 372
Driving Steel Piles				Foot 372
Bar Splicers				Each 12

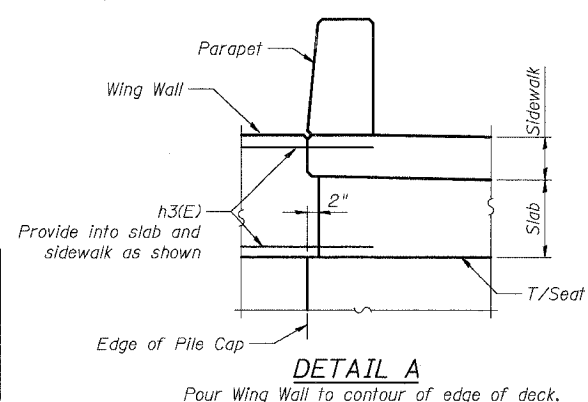
Notes:
Reinforcement bars designated (E) shall be epoxy coated.
All piles shall be encased per the Pile Encasement Detail on Sheet S8.
Bars indicated thus 4 x 2-#7(E) etc. indicate 4 lines of bars with 2 lengths per line.

PILE DATA

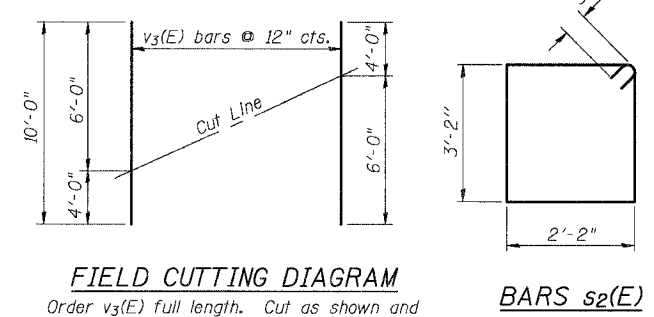
Type: Steel HP10x42
Capacity: Driven to Refusal
Est. Length: 31'
No. Required: 12



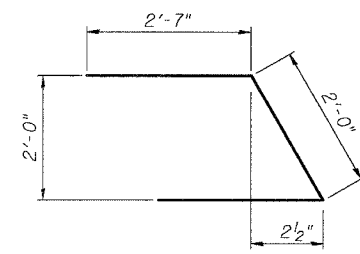
PLAN



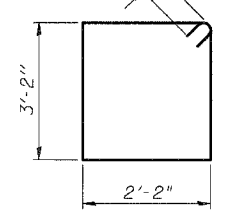
DETAIL A



FIELD CUTTING DIAGRAM



BAR u1(E)



BARS s2(E)

DESIGNED	UM
CHECKED	BLU
DRAWN	UM/EBP
CHECKED	BLU

DATE: 11/04/05

BOWMAN, BARRETT & ASSOCIATES INC.
CONSULTING ENGINEERS
130 E. RANDOLPH STREET
CHICAGO, ILLINOIS 60601
JOB NO. 541



EAST ABUTMENT
U.S. ROUTE 6 (BEDFORD ROAD)
OVER EAST FORK OF NETTLE CREEK
FAU 5952-SEC. G-BR-1
GRUNDY COUNTY
STATION 557+33.31
S.N. 032-0108