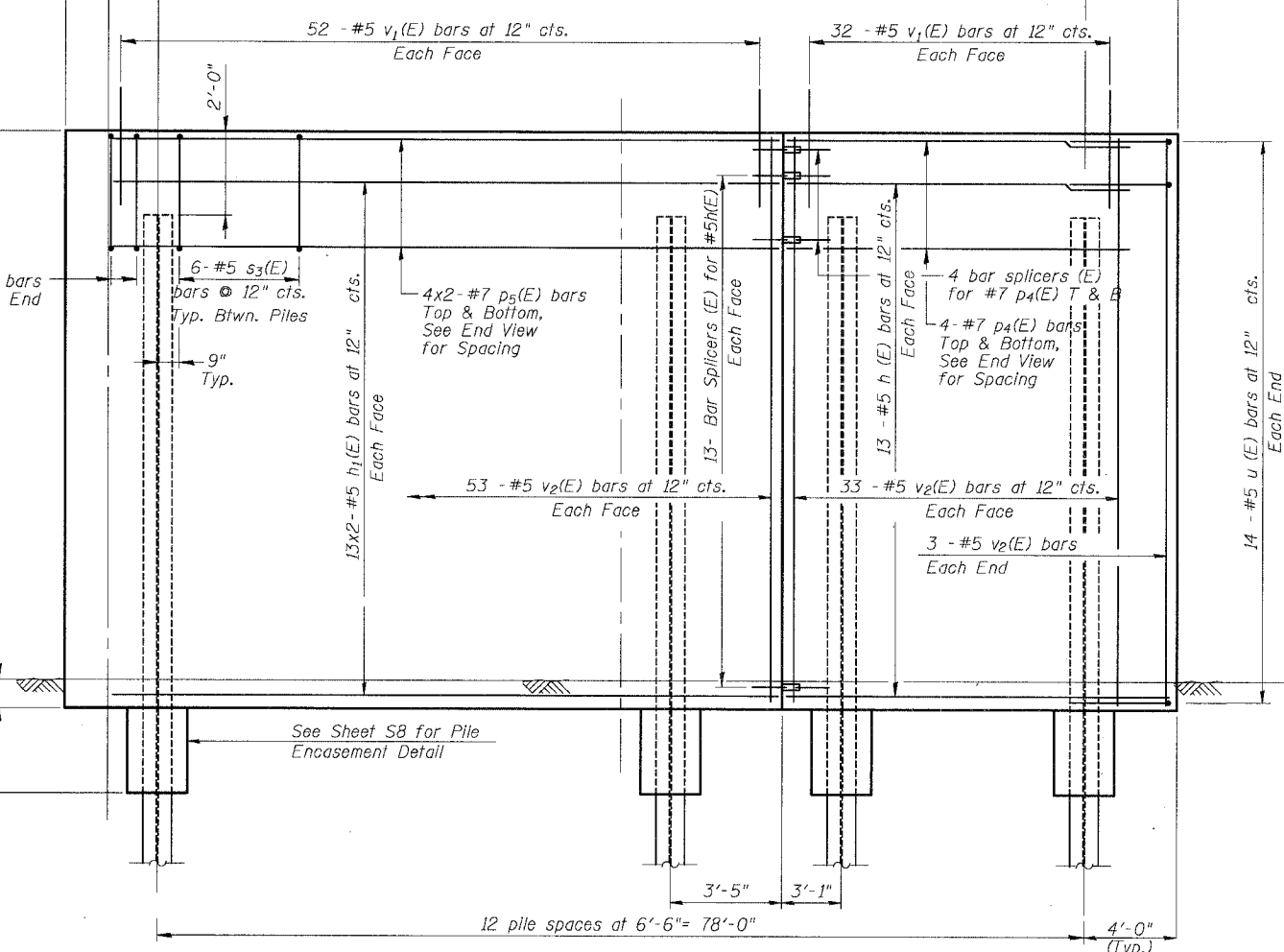
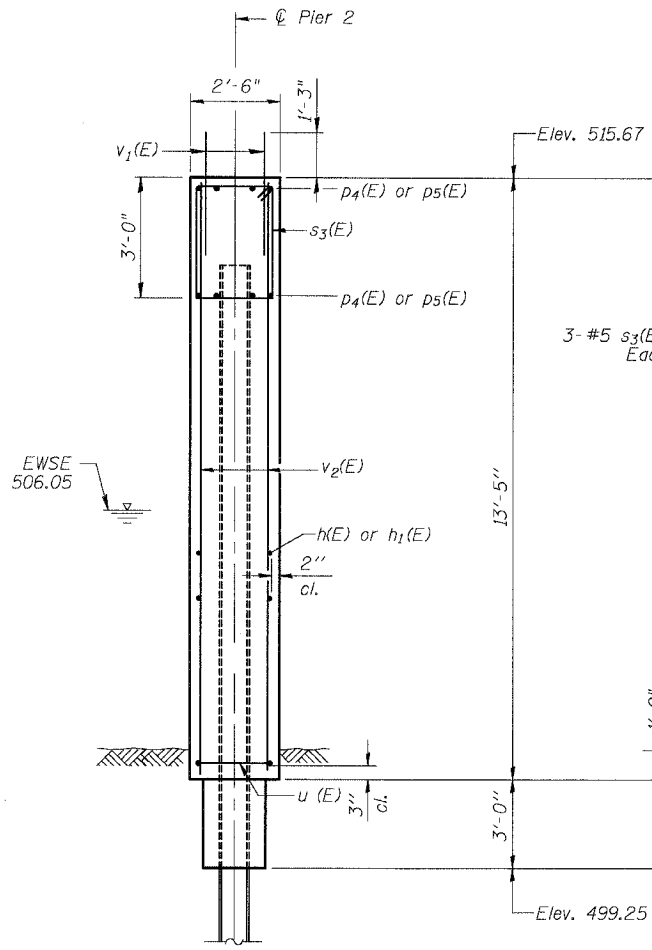
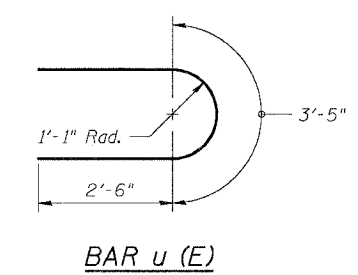
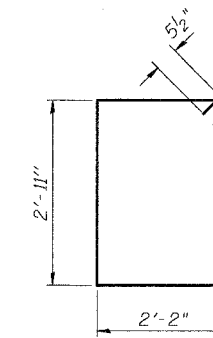
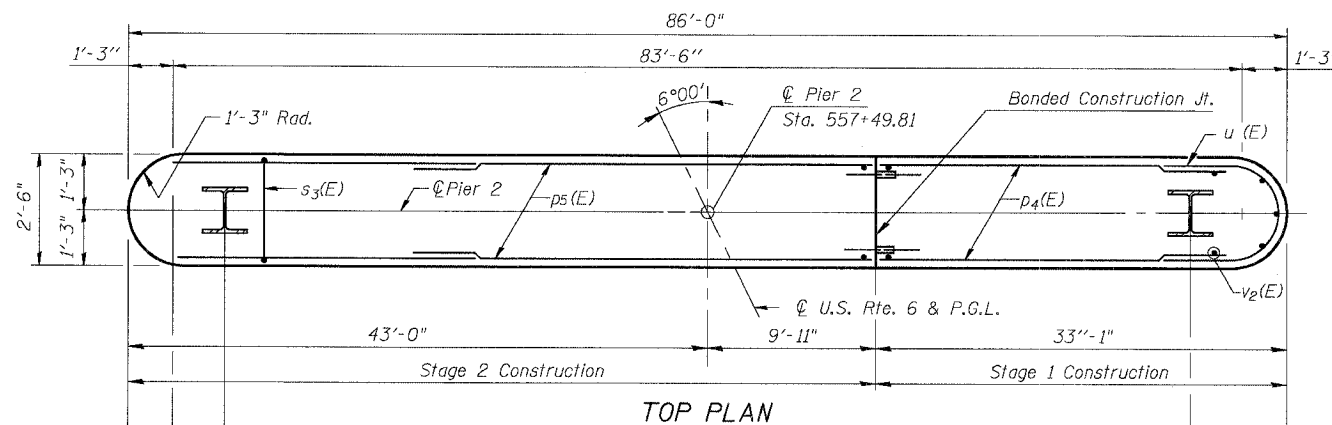
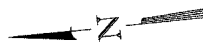


STATE OF ILLINOIS  
DEPARTMENT OF TRANSPORTATION

|                       |          |                   |           |               |
|-----------------------|----------|-------------------|-----------|---------------|
| ROUTE NO.             | SECTION  | COUNTY            | SHEET NO. | SHEET NO. S11 |
| FAU 5952              | ①        | GRUNDY            | 58        | 41            |
| FED. ROAD DIST. NO. 7 | ILLINOIS | FED. AID PROJECT- |           | OF 514 SHEETS |
|                       |          |                   | ① G-BR-1  | 66563         |

**PILE DATA**

Type: Steel HP 10x42  
Capacity: Driven to Refusal  
Est. Length: 33'  
No. Req'd: 12 + 1 Test Pile



**BILL OF MATERIAL**

| Bar  | No.     | Size | Length  | Shape |
|--|---------|------|---------|-------|
| h (E)  | 26      | # 5  | 31'-7"  | —     |
| h1(E)  | 52      | # 5  | 26'-11" | —     |
| p4(E)  | 8       | # 7  | 31'-7"  | —     |
| p5(E)  | 16      | # 7  | 28'-2"  | —     |
| s3(E)  | 78      | # 5  | 11'-1"  | □     |
| u (E)  | 28      | # 5  | 8'-5"   | U     |
| v2(E)  | 178     | # 5  | 13'-0"  | —     |
| v1(E)  | 168     | # 5  | 3'-5"   | —     |
| Concrete Structures                                    | Cu. Yd. |      | 106.2   |       |
| Reinforcement Bars, Epoxy Coated                       | Pound   |      | 7920    |       |
| Furnishing Steel Piles HP10x42                         | Foot    |      | 396     |       |
| Test Pile Steel HP10x42                                | Each    |      | 1       |       |
| Driving Steel Piles                                    | Foot    |      | 396     |       |
| Bar Splicers   | Each    |      | 34      |       |
| Underwater Structure Excavation Protection, Location 2 | Each    |      | 1       |       |

Notes:  
Reinforcement bars designated (E) shall be epoxy coated.  
Bars indicated thus 14 x 2-#5 etc. indicate 14 lines of bars with 2 lengths per line.  
All piles shall be encased per the Pile Encasement Detail on Sheet S8.  
Tremie concrete shall be used below the water level.

**MIN. BAR LAP**

|    |        |
|----|--------|
| #5 | 2'-2"  |
| #7 | 4'-10" |

|          |     |
|----------|-----|
| DESIGNED | UM  |
| CHECKED  | BLU |
| DRAWN    | EBP |
| CHECKED  | BLU |

DATE: 12/25/05

**PIER 2**  
**U.S. ROUTE 6 (BEDFORD ROAD)**  
**OVER EAST FORK OF NETTLE CREEK**  
**FAU 5952-SEC. G-BR-1**  
**GRUNDY COUNTY**  
**STATION 557+33.31**  
**S.N. 032-0108**

BOWMAN, BARRETT & ASSOCIATES INC.  
CONSULTING ENGINEERS  
130 E. RANDOLPH STREET  
CHICAGO, ILLINOIS 60601  
JOB NO. 541



c:\p1\10\24\2005 14:31:2 PM n:\54\cadd\brldge\108bp102.dgn