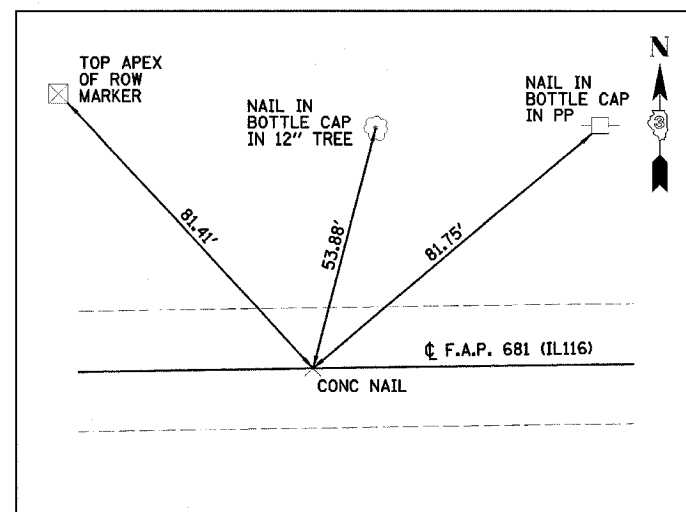
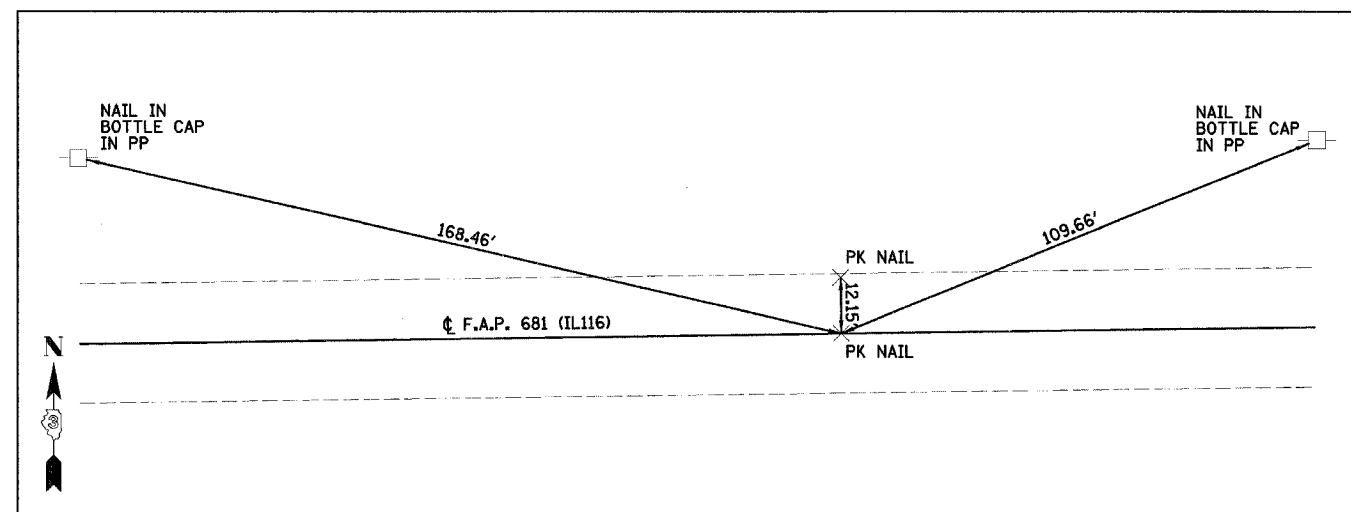


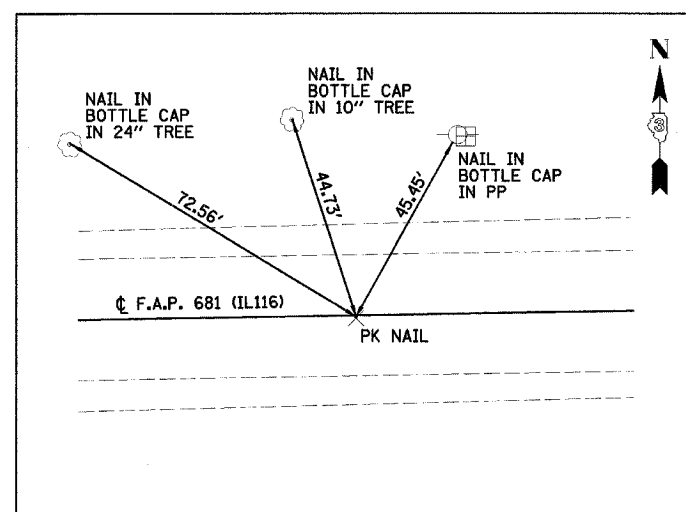
F.A.P. RTE.	SECTION	COUNTY	TOTAL SHEETS	SHEET NO.
681	113BR-2	LIVINGSTON	47	8
STA.		TO STA.		
FED. ROAD DIST. NO.		ILLINOIS FED. AID PROJECT		



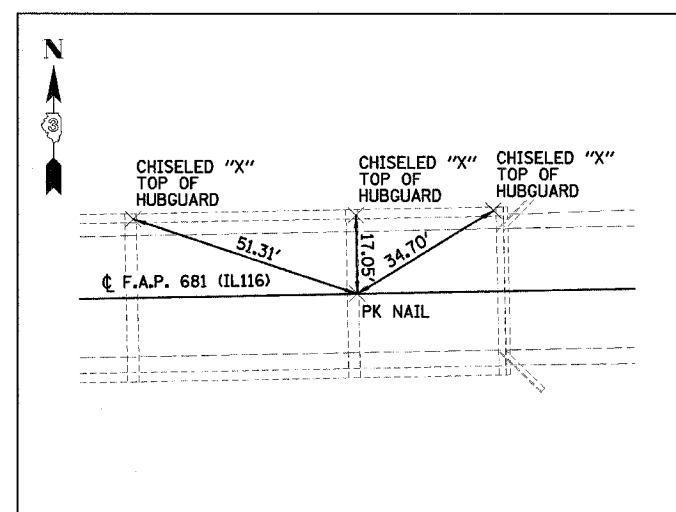
P.O.T. STA. 414+30.65, 0.00' LT



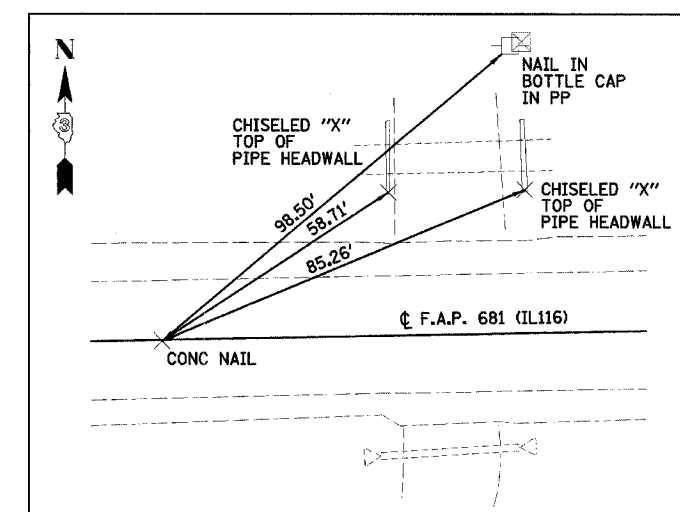
P.C. STA. 427+00.00, 0.00' LT



P.I. STA. 432+00.00, 0.62' LT



P.T. STA. 437+00.00, 0.00' LT



P.O.T. STA. 441+25.76, 0.00' LT

REVISIONS	
NAME	DATE

ILLINOIS DEPARTMENT OF TRANSPORTATION  
 CENTERLINE SURVEY TIES  
 F.A.P. 681 (IL116) OVER FELKY SLOUGH  
 SECTION 113BR-2  
 LIVINGSTON COUNTY

DATE: 12/09/05  
 DRAWN BY: JJO  
 CHECKED BY: MSW