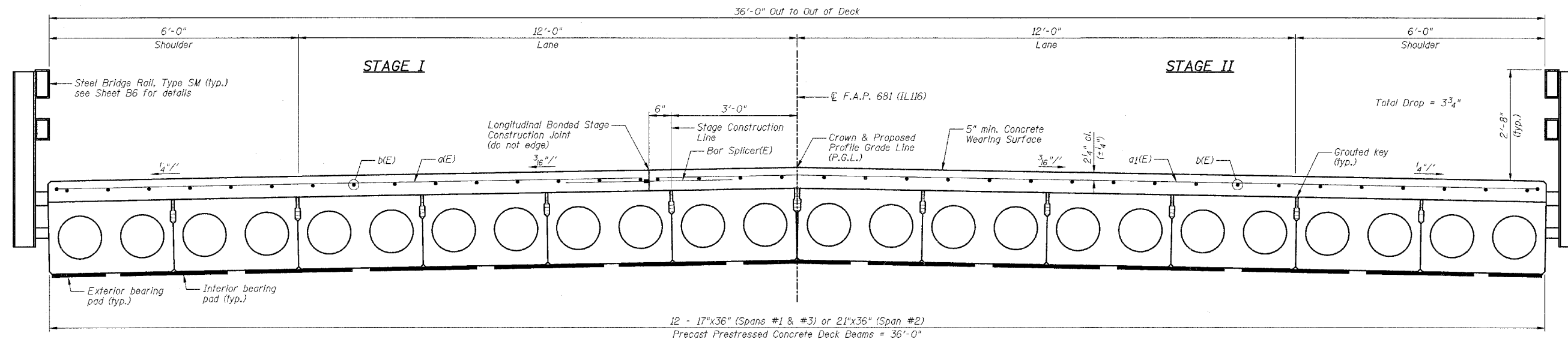


STATE OF ILLINOIS  
DEPARTMENT OF TRANSPORTATION

|                     |          |                  |              |           |
|---------------------|----------|------------------|--------------|-----------|
| F.A.P. RTE.         | SECTION  | COUNTY           | TOTAL SHEETS | SHEET NO. |
| 681                 | 113BR-2  | LIVINGSTON       | 47           | 20        |
| STA.                | TO STA.  |                  |              |           |
| FED. ROAD DIST. NO. | ILLINOIS | FED. AID PROJECT |              |           |

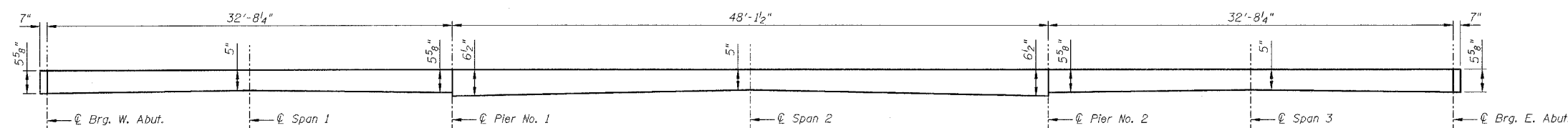
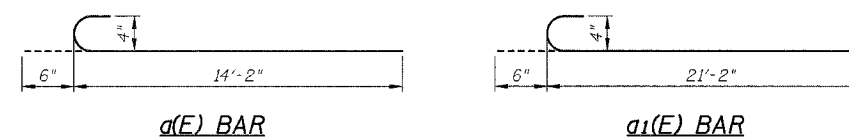
SHEET NO. 88  
OF 31 SHEETS



**CROSS SECTION**  
(Looking East)

**SUPERSTRUCTURE  
BILL OF MATERIAL**

| Bar                              | No.   | Size     | Length  | Shape |
|----------------------------------|-------|----------|---------|-------|
| a(E)                             | 115   | #4       | 14'-8"  | C     |
| a1(E)                            | 115   | #4       | 21'-8"  | C     |
| b(E)                             | 148   | #4       | 29'-10" |       |
| Item                             | Unit  | Quantity |         |       |
| Concrete Wearing Surface 5"      | Sq Yd | 459      |         |       |
| Reinforcement Bars, Epoxy Coated | Pound | 5740     |         |       |
| Bar Splicers                     | Each  | 115      |         |       |



**REINFORCED CONCRETE WEARING SURFACE PROFILE**  
(Concrete Wearing Surface along  $\ell$  of Roadway.)

**NOTES:**

- 1.) Work this sheet with Sheet B7, B9 & B10.
- 2.) See Sheets B9 & B10 for bearing pad details.
- 3.) Concrete Wearing Surface to be poured after grouting the shear keys.
- 4.) Dowel rods drilled in cap are included in the cost of "Precast Prestressed Concrete Deck Beams (17" Depth or 21" Depth)".
- 5.) Reinforcement bars designated (E) shall be epoxy coated.
- 6.) See Sheet B5 for Bar Splicer Details.

| REVISIONS |      | ILLINOIS DEPARTMENT OF TRANSPORTATION<br>SUPERSTRUCTURE CROSS SECTION<br>AND DETAILS<br>F.A.P. 681 (IL116) OVER FELKY SLOUGH<br>SECTION 113BR-2<br>LIVINGSTON COUNTY<br>STATION 436+75.00<br>STRUCTURE NO. 053-0075 |
|-----------|------|---|
| NAME      | DATE |   |
|           |      | DESIGNED BY: JML<br>DRAWN BY: DJM<br>DATE: 12/09/05<br>CHECKED BY: MSW  |
|           |      |   |
|           |      |   |
|           |      |   |
|           |      |   |
|           |      |   |