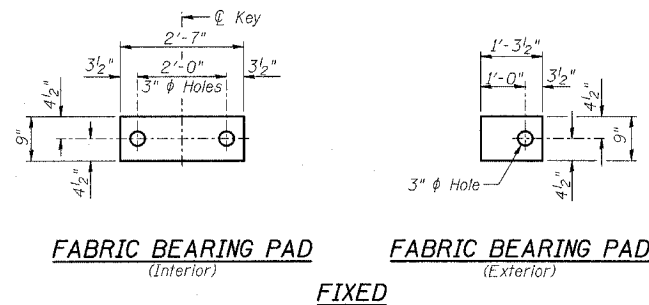


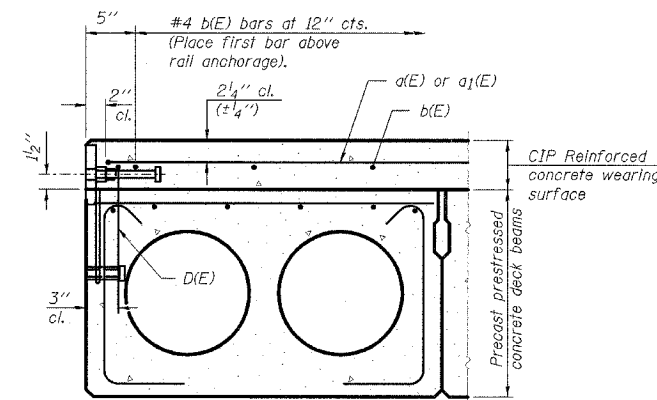
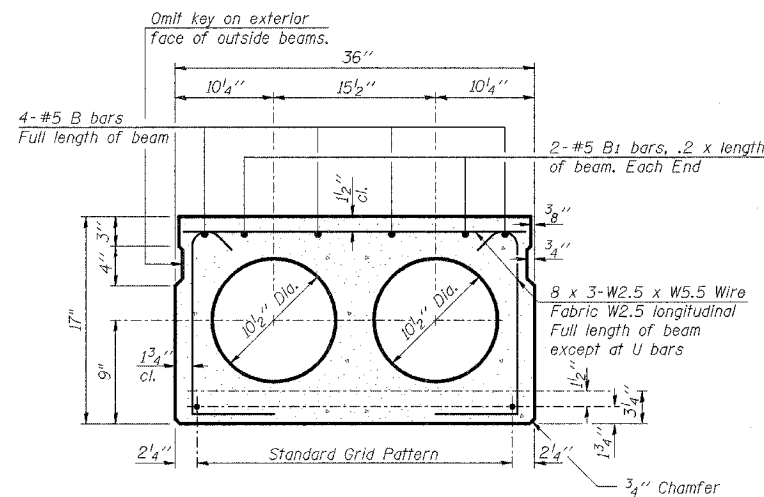
STATE OF ILLINOIS
DEPARTMENT OF TRANSPORTATION

F.A.P. RTE.	SECTION	COUNTY	TOTAL SHEETS	SHEET NO.
681	113BR-2	LIVINGSTON	47	21
STA.		TO STA.		
FED. ROAD DIST. NO.		ILLINOIS FED. AID PROJECT		

SHEET NO. B9
OF 31 SHEETS

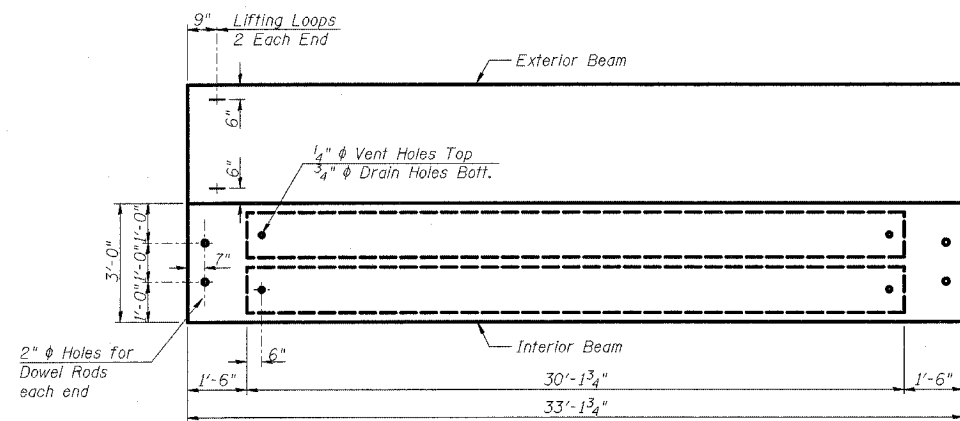


FIXED

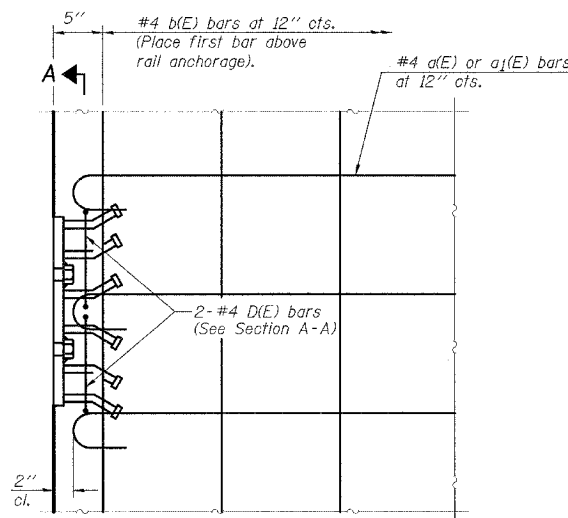


CROSS SECTION

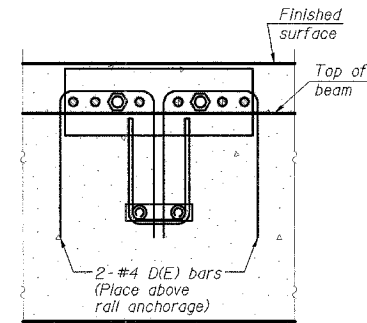
1/2" ϕ Strands, Each Strand Stressed to 30,900 Lbs.
5-Strands 1 3/4" up. 4-Strands 3/4" up
Note: Place strands symmetrically about ϕ of beam.



PLAN



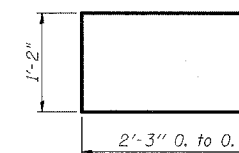
PLAN



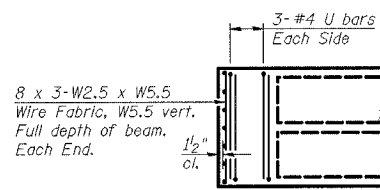
SECTION A-A



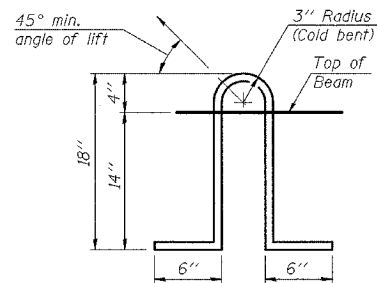
D(E) BAR



U BAR



END PLAN



LIFTING LOOP DETAIL

NOTES

The rail anchorage shall be cast with the beam and the wearing surface shall be cast in the field. Formwork necessary for the wearing surface may be secured utilizing the bottom rail anchorage inserts and/or additional inserts cast into the beam. Drilling into the beam will not be permitted.

Prestressing steel shall be uncoated high strength, low relaxation 7-wire strand, Grade 270. The nominal diameter shall be 1/2" and the nominal cross-sectional area shall be 0.153 sq. in. Lifting loops shall be 2 - 1/2" ϕ -270 ksi strands, as shown.

Non prestressing steel shall conform to AASHTO M31 or M322 Grade 60. The bearing seat surfaces shall be adjusted by shimming to assure firm and even bearing. Two 1/2" fabric adjusting shims of the dimensions of the Exterior Bearing Pad shall be provided for each bearing.

Keyway surfaces shall be cleaned to remove form oil or other bond breaking material prior to shipment of the beams. Cleaning shall be done by sandblasting the keyway areas between top of the beam and the bottom edge of the key.

Corrosion Inhibitor, as covered in the Special Provisions, shall be used in the concrete for precast prestressed concrete deck beams.

Required Release Strength, f'cl, shall be 4000 p.s.i. See Sheet B2 for location of rail inserts.

Bridge rail Inserts shall be cast in precast beams and Concrete Wearing Surface.

BILL OF MATERIAL

Item	Unit	Quantity
Precast Prestressed Conc. Deck Bms. (17" Depth)	Sq. Ft.	2,386.5

REVISIONS	
NAME	DATE

ILLINOIS DEPARTMENT OF TRANSPORTATION
17"x36" PPC DECK BEAM DETAILS
SPANS 1 & 3
F.A.P. 681 (IL116) OVER FELKY SLOUGH
SECTION 113BR-2
LIVINGSTON COUNTY
STATION 436+75.00
STRUCTURE NO. 053-0075
DESIGNED BY: JML
DRAWN BY: DJM
DATE: 12/09/05
CHECKED BY: MSW

PD-3-SA

10-22-04