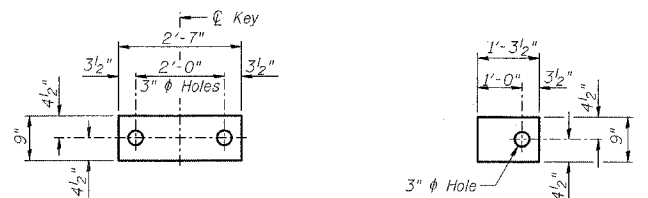


F.A.P. RTE.	SECTION	COUNTY	TOTAL SHEETS	SHEET NO.
681	113BR-2	LIVINGSTON	47	22
STA.		TO STA.		
FED. ROAD DIST. NO.		ILLINOIS FED. AID PROJECT		

SHEET NO. B10
OF 31 SHEETS

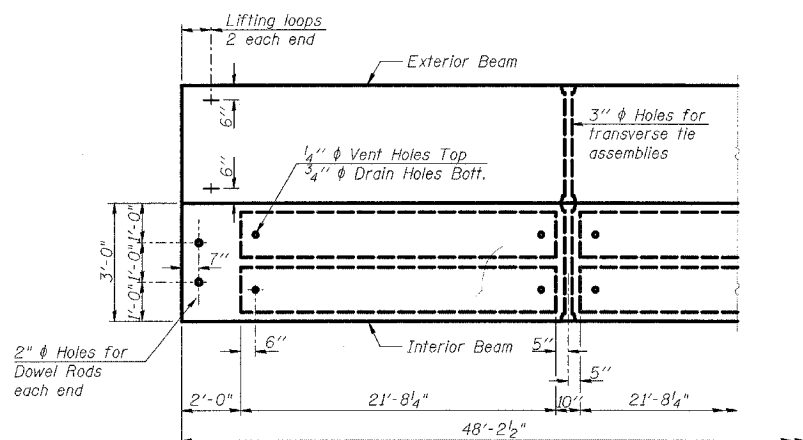
STATE OF ILLINOIS
DEPARTMENT OF TRANSPORTATION



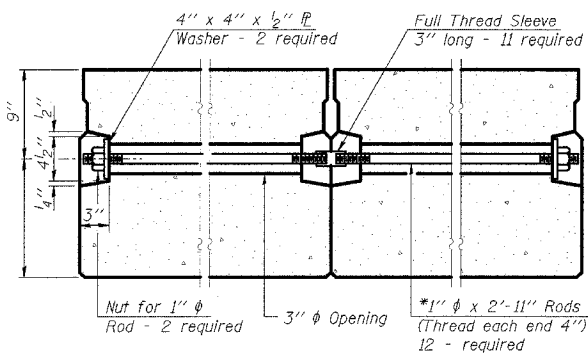
FABRIC BEARING PAD
(Interior)

FABRIC BEARING PAD
(Exterior)

FIXED

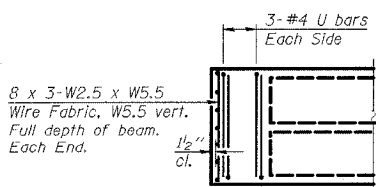


PLAN

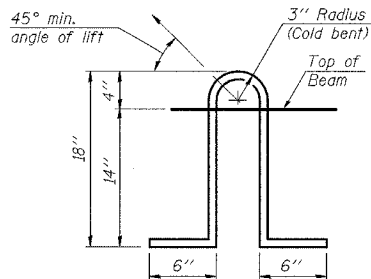


TYPICAL TRANSVERSE TIE ASSEMBLY

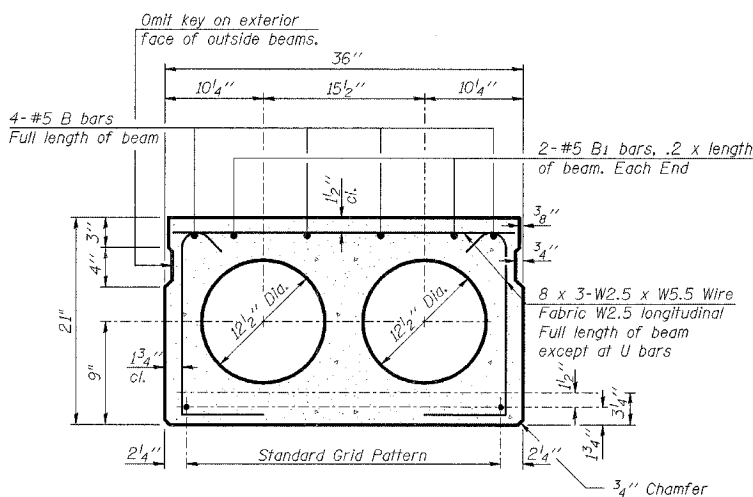
*Alternate approved transverse tie rods of increased segmental length are acceptable.



END PLAN



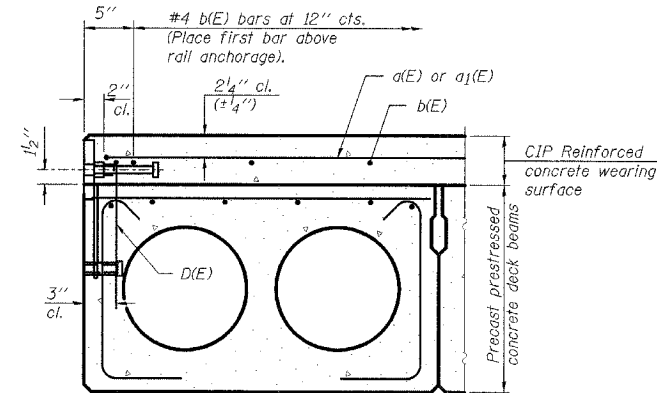
LIFTING LOOP DETAIL



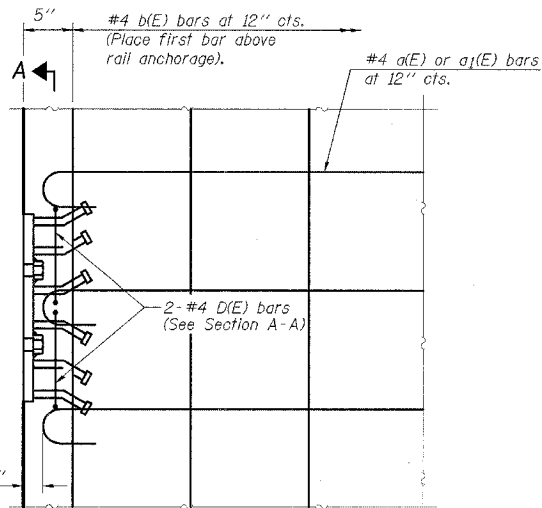
TYPICAL SECTION

1/2" ϕ Strands, Each Strand Stressed to 30,900 Lbs.
6-Strands 1 3/4" up, 8-Strands 3 1/4" up & 2-Strands 12" up.

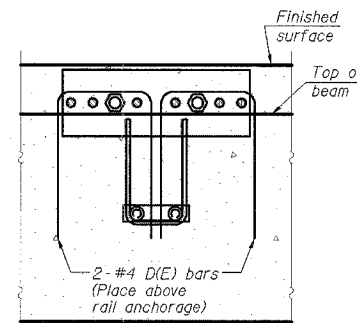
Note:
Place strands symmetrically about ϕ of beam.



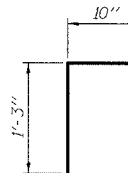
CROSS SECTION



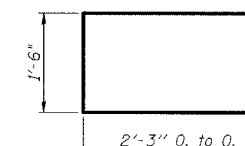
PLAN



SECTION A-A



D(E) BAR



U BAR

Notes:
The rail anchorage shall be cast with the beam and the wearing surface shall be cast in the field. Formwork necessary for the wearing surface may be secured utilizing the bottom rail anchorage inserts and/or additional inserts cast into the beam. Drilling into the beam will not be permitted.

NOTES

Prestressing steel shall be uncoated high strength, low relaxation 7-wire strand, Grade 270. The nominal diameter shall be 1/2" and the nominal cross-sectional area shall be 0.153 sq. in. Lifting loops shall be 2 - 1/2" ϕ 270 ksi strands, as shown.
The 1" ϕ rods in the transverse tie assembly shall be tightened to a snug fit and the threads set. Pockets that receive transverse tie bar on outside shall be filled with grout after transverse tie assembly is in place.
Non prestressing steel shall conform to AASHTO M31 or M322 Grade 60.
The bearing seat surfaces shall be adjusted by shimming to assure firm and even bearing. Two 1/8" fabric adjusting shims of the dimensions of the Exterior Bearing Pad shall be provided for each bearing.
Keyway surfaces shall be cleaned to remove form oil or other bond breaking material prior to shipment of the beams. Cleaning shall be done by sandblasting the keyway areas between top of the beam and the bottom edge of the key.
Corrosion Inhibitor, as covered in the Special Provisions, shall be used in the concrete for precast prestressed concrete deck beams.
Required Release Strength, f'ci, shall be 4000 p.s.i.
See Sheet B2 for location of rail inserts.
Bridge rail inserts shall be cast in precast beams and Concrete Wearing Surface.

BILL OF MATERIAL

Item	Unit	Quantity
Precast Prestressed Conc. Deck Bms. (21" Depth)	Sq. Ft.	1735.5

REVISIONS	
NAME	DATE

ILLINOIS DEPARTMENT OF TRANSPORTATION
21"x36" PPC DECK BEAM DETAILS
SPAN 2
F.A.P. 681 (IL116) OVER FELKY SLOUGH
SECTION 113BR-2
LIVINGSTON COUNTY
STATION 436+75.00
STRUCTURE NO. 053-0075
DESIGNED BY: JML
DATE: 12/09/05
DRAWN BY: DJM
CHECKED BY: MSW

PD-3-S

10-22-04