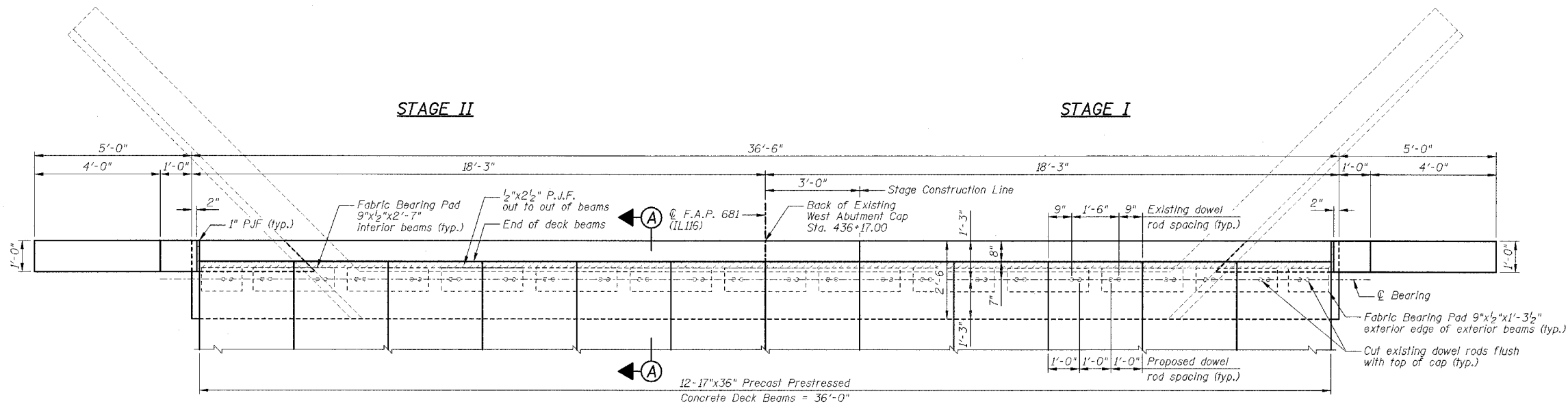


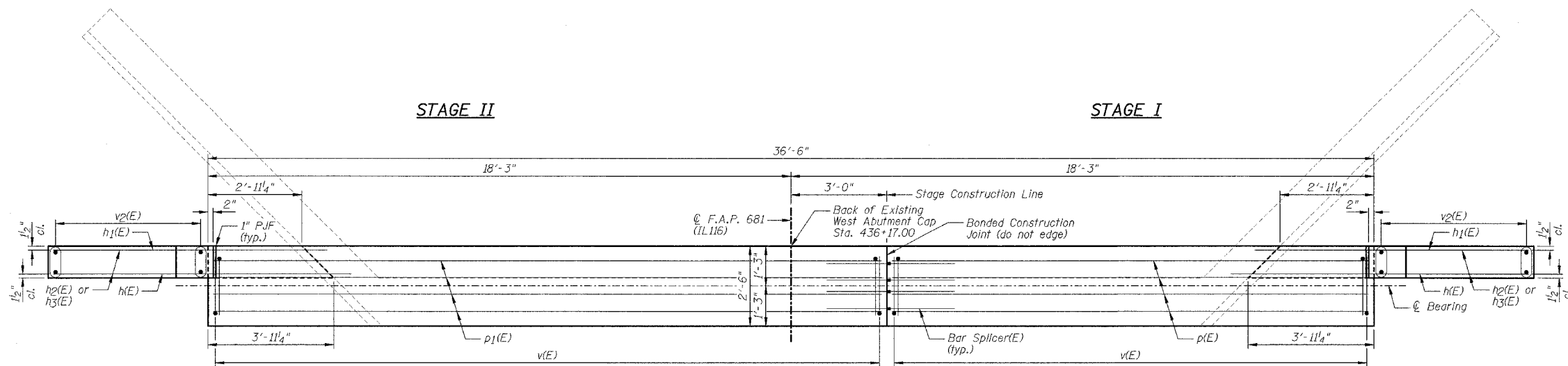
STATE OF ILLINOIS
DEPARTMENT OF TRANSPORTATION

F.A.P. RTE.	SECTION	COUNTY	TOTAL SHEETS	SHEET NO.
681	113BR-2	LIVINGSTON	47	24
STA.		TO STA.		
FED. ROAD DIST. NO.		ILLINOIS FED. AID PROJECT		

SHEET NO. B12
OF 31 SHEETS



PLAN VIEW WITH BEAMS



PLAN VIEW WITHOUT BEAMS



NOTES:

- 1.) Work this sheet with Sheets B11 & B13.
- 2.) See Sheet B5 for Bar Splicer Details.
- 3.) See Sheet B13 for Section A-A.
- 4.) Reinforcement bars designated (E) shall be epoxy coated.
- 5.) Drill & epoxy grout h(E) & h1(E) bar in 8" (min.) drilled holes and v(E) bars in 6" (min.) drilled holes according to Section 584 of the Standard Specifications.
- 6.) The type of epoxy grout shall be approved by the Engineer.
- 7.) Space reinforcement in cap to miss dowel anchor hole locations.

REVISIONS		ILLINOIS DEPARTMENT OF TRANSPORTATION WEST ABUTMENT F.A.P. 681 (IL116) OVER FELKY SLOUGH SECTION 113BR-2 LIVINGSTON COUNTY STATION 436+75.00 STRUCTURE NO. 053-0075
NAME	DATE	

DESIGNED BY: JML DRAWN BY: DJM
DATE: 12/09/05 CHECKED BY: MSW