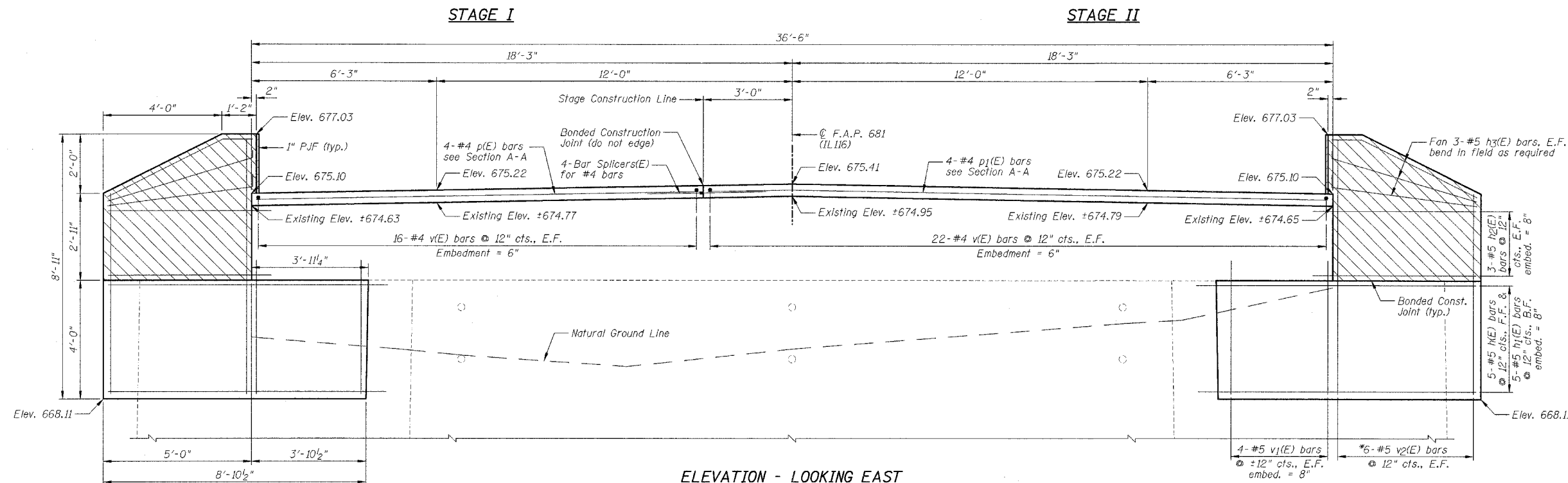


STATE OF ILLINOIS
DEPARTMENT OF TRANSPORTATION

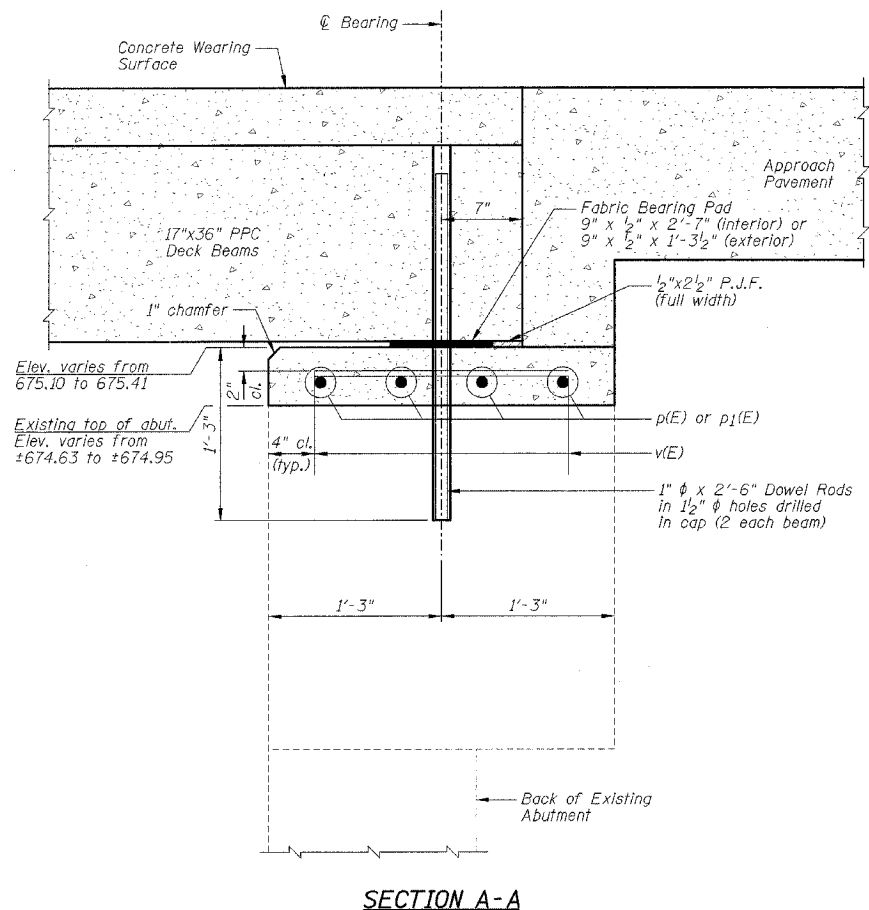
| | | | | |
|---------------------|----------|------------------|--------------|-----------|
| F.A.P. RTE. | SECTION | COUNTY | TOTAL SHEETS | SHEET NO. |
| 681 | 113BR-2 | LIVINGSTON | 47 | 28 |
| STA. | TO STA. | | | |
| FED. ROAD DIST. NO. | ILLINOIS | FED. AID PROJECT | | |

SHEET NO. B16
OF 31 SHEETS

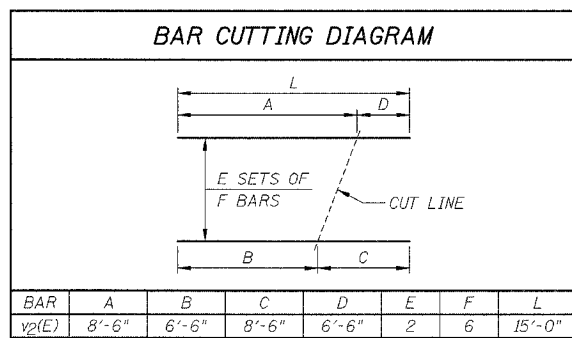
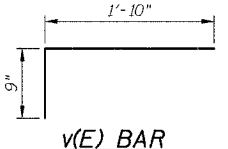


ELEVATION - LOOKING EAST

*Order v2(E) bars full length. Cut according to Bar Cutting Diagram. Use remainder in opposite face.



SECTION A-A



**EAST ABUTMENT
BILL OF MATERIAL**

| Bar | No. | Size | Length | Shape |
|-------|-----|------|---------|-------|
| h(E) | 10 | #5 | 9'-5" | --- |
| h1(E) | 10 | #5 | 8'-6" | --- |
| h2(E) | 12 | #5 | 5'-6" | --- |
| h3(E) | 12 | #5 | 4'-10" | --- |
| p(E) | 4 | #4 | 14'-11" | --- |
| p1(E) | 4 | #4 | 20'-11" | --- |
| v(E) | 76 | #4 | 2'-7" | --- |
| v1(E) | 16 | #5 | 4'-5" | --- |
| v2(E) | 12 | #5 | 15'-0" | --- |

| Item | Unit | Quantity |
|---|-------|----------|
| Concrete Removal | Cu Yd | 2.7 |
| Concrete Structures | Cu Yd | 5.8 |
| Formed Concrete Repair (Depth Equal To Or Less Than 5") | Sq Ft | 4.0 |
| Reinforcement Bars, Epoxy Coated | Pound | 810 |
| Epoxy Crack Sealing | Foot | 8 |
| Geocomposite Wall Drain | Sq Yd | 15 |
| Pipe Underdrains For Structures 4" | Foot | 70 |
| Bar Splicers | Each | 4 |

NOTES:

- 1.) Work this sheet with Sheets B14 & B15.
- 2.) See Sheet B15 for location of Section A-A.
- 3.) Hatched area to be poured after beams are in place.
- 4.) E.F. denotes Each Face, F.F. denotes Front Face & B.F. denotes Back Face.
- 5.) See Sheet B5 for Bar Splicer Details.
- 6.) Reinforcement bars designated (E) shall be epoxy coated.
- 7.) Drill & epoxy grout h(E), h1(E), h2(E) & v1(E) bars in 8" (min.) drilled holes and v(E) bars in 6" (min.) drilled holes according to Section 584 of the Standard Specifications.
- 8.) The type of epoxy grout shall be approved by the Engineer.
- 9.) Space reinforcement in cap to miss dowel anchor hole locations.

| REVISIONS | | ILLINOIS DEPARTMENT OF TRANSPORTATION | |
|-----------|------|---------------------------------------|-----------------|
| NAME | DATE | | |
| | | EAST ABUTMENT | |
| | | F.A.P. 681 (IL116) OVER FELKY SLOUGH | |
| | | SECTION 113BR-2 | |
| | | LIVINGSTON COUNTY | |
| | | STATION 436+75.00 | |
| | | STRUCTURE NO. 053-0075 | |
| | | DESIGNED BY: JML | DRAWN BY: DJM |
| | | DATE: 12/09/05 | CHECKED BY: MSW |