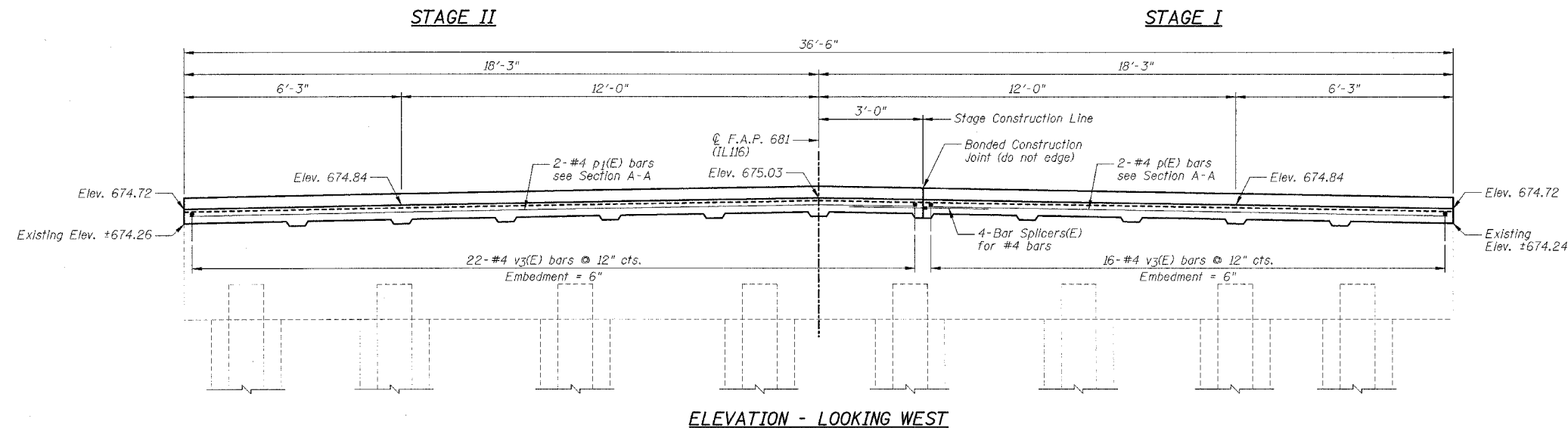


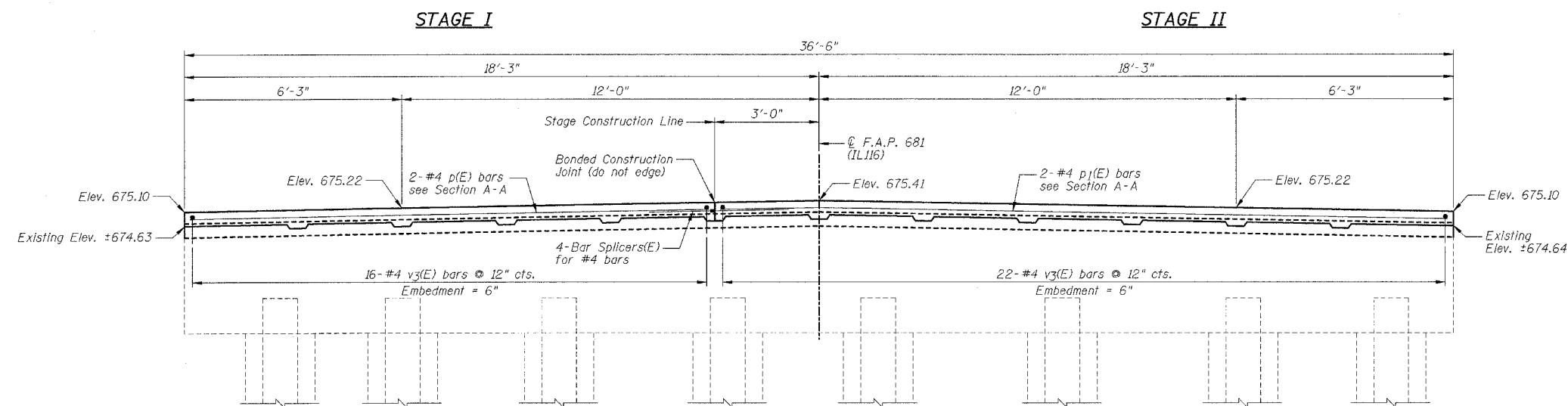
STATE OF ILLINOIS
DEPARTMENT OF TRANSPORTATION

F.A.P. RTE.	SECTION	COUNTY	TOTAL SHEETS	SHEET NO.
681	113BR-2	LIVINGSTON	47	31
STA.	TO STA.			
FED. ROAD DIST. NO.	ILLINOIS	FED. AID PROJECT		

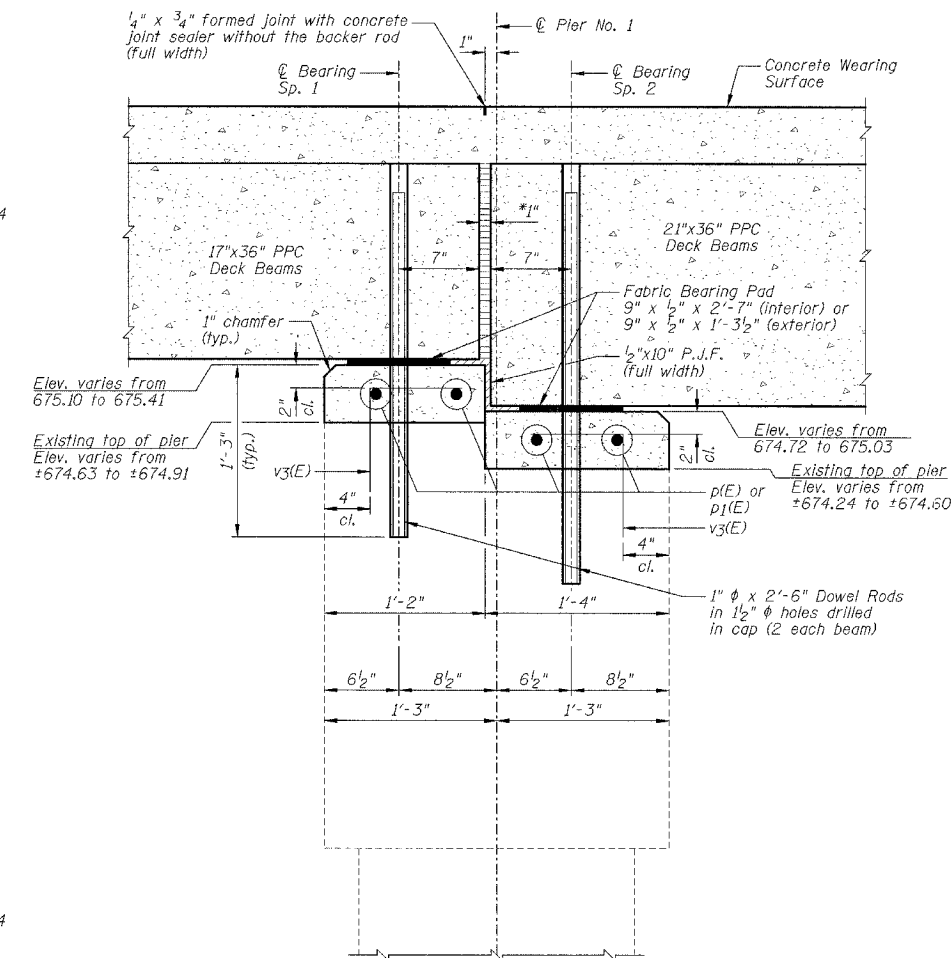
SHEET NO. B19
OF 31 SHEETS



ELEVATION - LOOKING WEST



ELEVATION - LOOKING EAST

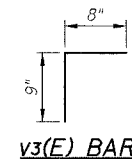


*1" jt. shall be filled with non-shrink grout. 1" dimension may vary to accommodate tolerance in beam lengths.

**PIER NO. 1
BILL OF MATERIAL**

Bar	No.	Size	Length	Shape
p(E)	4	#4	14'-11"	—
p1(E)	4	#4	20'-11"	—
v3(E)	76	#4	1'-5"	—

Item	Unit	Quantity
Concrete Structures	Cu Yd	1.7
Formed Concrete	Sq Ft	61.8
Repair (Depth Equal To Or Less Than 5")	Sq Ft	61.8
Reinforcement Bars, Epoxy Coated	Pound	170
Bar Splicers	Each	4



NOTES:

- 1.) Work this sheet with Sheets B17 & B18.
- 2.) See Sheet B5 for Bar Splicer Details.
- 3.) See Sheet B18 for location of Section A-A.
- 4.) Reinforcement bars designated (E) shall be epoxy coated.
- 5.) Drill & epoxy grout v3(E) bars in 6" (min.) drilled holes according to Section 584 of the Standard Specifications.
- 6.) Dowel rods drilled in cap are included in the cost of "Concrete Structures".
- 7.) The type of epoxy grout shall be approved by the Engineer.
- 8.) Space reinforcement in cap to miss dowel anchor hole locations.

REVISIONS		ILLINOIS DEPARTMENT OF TRANSPORTATION PIER NO. 1 F.A.P. 681 (IL116) OVER FELKY SLOUGH SECTION 113BR-2 LIVINGSTON COUNTY STATION 436+75.00 STRUCTURE NO. 053-0075
NAME	DATE	
		DESIGNED BY: JML DRAWN BY: DJM DATE: 12/09/05 CHECKED BY: MSW