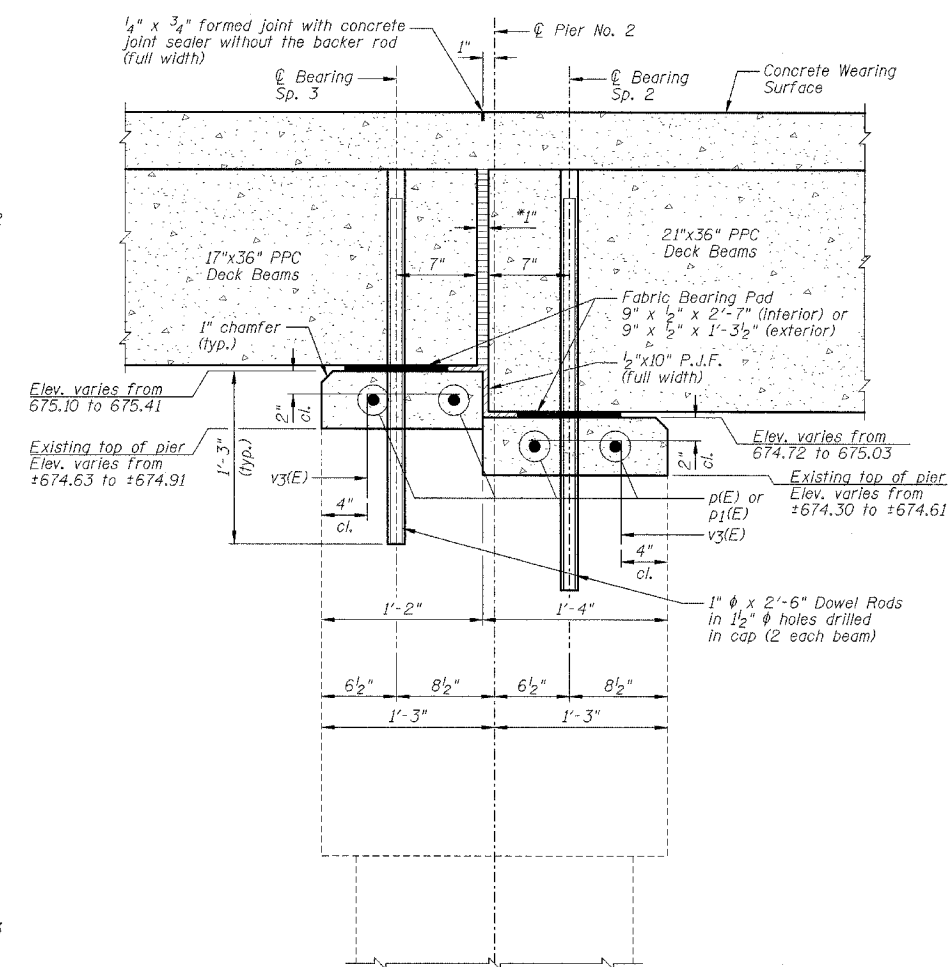
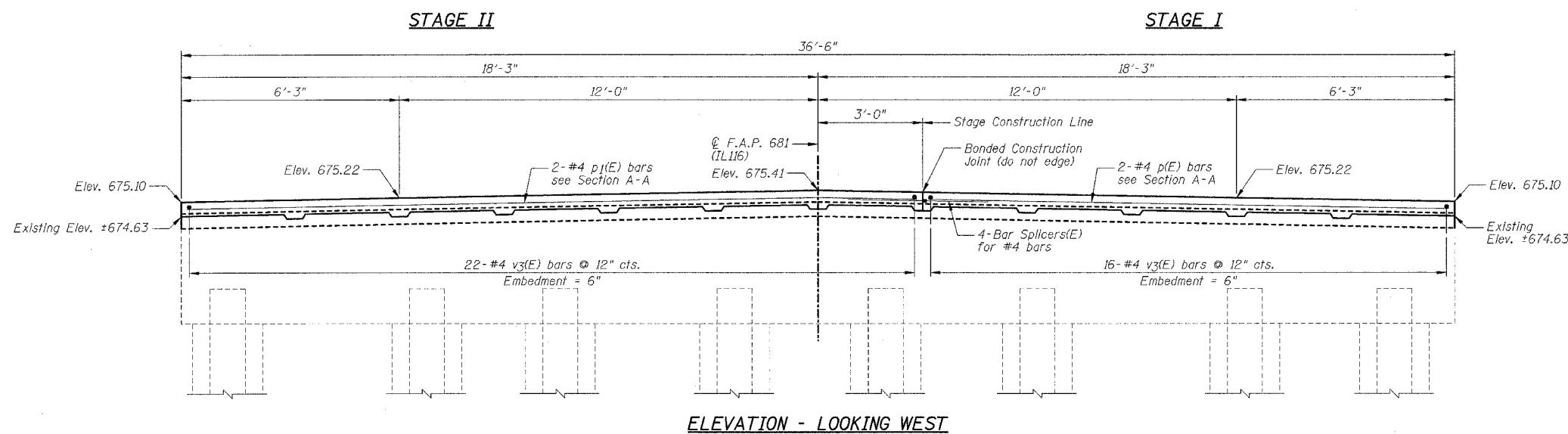
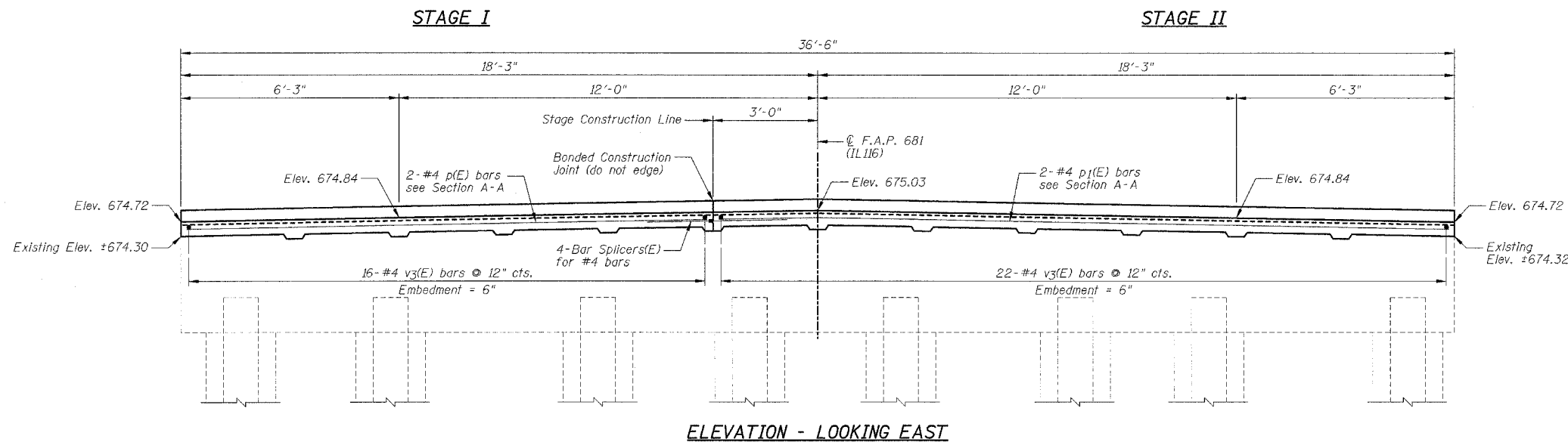


STATE OF ILLINOIS
DEPARTMENT OF TRANSPORTATION

F.A.P. RTE.	SECTION	COUNTY	TOTAL SHEETS	SHEET NO.
681	113BR-2	LIVINGSTON	47	34
STA.	TO STA.			
FED. ROAD DIST. NO.	ILLINOIS	FED. AID PROJECT		

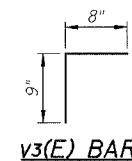


*1" Jt. shall be filled with non-shrink grout. 1" dimension may vary to accommodate tolerance in beam lengths.

**PIER NO. 2
BILL OF MATERIAL**

Bar	No.	Size	Length	Shape
p(E)	4	#4	14'-11"	
p1(E)	4	#4	20'-11"	
v3(E)	76	#4	1'-5"	

Item	Unit	Quantity
Concrete Structures	Cu Yd	1.6
Formed Concrete Repair (Depth Equal To Or Less Than 5")	Sq Ft	7.0
Reinforcement Bars, Epoxy Coated	Pound	170
Bar Splicers	Each	4



NOTES:

- 1.) Work this sheet with Sheets B20 & B21.
- 2.) See Sheet B5 for Bar Splicer Details.
- 3.) See Sheet B21 for location of Section A-A.
- 4.) Reinforcement bars designated (E) shall be epoxy coated.
- 5.) Drill & epoxy grout v3(E) bars in 6" (min.) drilled holes according to Section 584 of the Standard Specifications.
- 6.) Dowel rods drilled in cap are included in the cost of "Concrete Structures".
- 7.) The type of epoxy grout shall be approved by the Engineer.
- 8.) Space reinforcement in cap to miss dowel anchor hole locations.

REVISIONS		ILLINOIS DEPARTMENT OF TRANSPORTATION PIER NO. 2 F.A.P. 681 (IL116) OVER FELKY SLOUGH SECTION 113BR-2 LIVINGSTON COUNTY STATION 436+75.00 STRUCTURE NO. 053-0075
NAME	DATE	
		DESIGNED BY: JML DRAWN BY: DJM DATE: 12/09/05 CHECKED BY: MSW