

STATE OF ILLINOIS
DEPARTMENT OF TRANSPORTATION

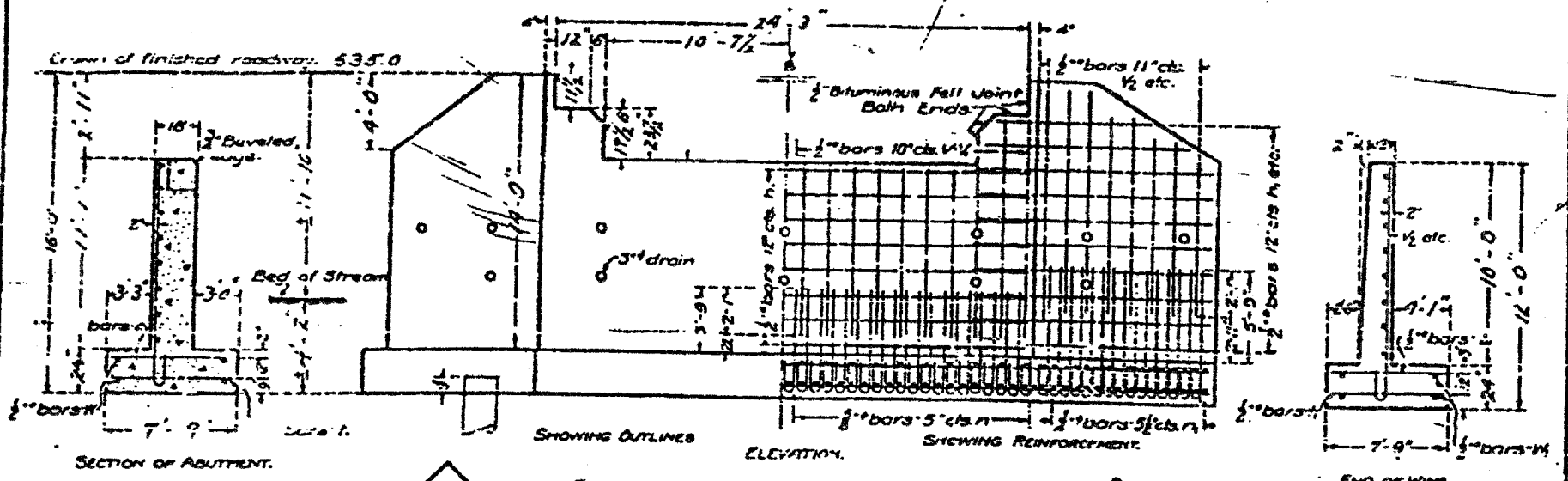
F.A.P. RTE.	SECTION	COUNTY	TOTAL SHEETS	SHEET NO.
681	113BR-2	LIVINGSTON	47	37
STA.	TO STA.			
FED. ROAD DIST. NO.	ILLINOIS	FED. AID PROJECT		

SHEET NO. 625
OF 31 SHEETS

Existing Structure, Steel, 100' span
16' dx to be removed by Bridge Contractor
B.M. #48 N & W in Root 2.8 Maple Lt.
Sta 434+46 21.55579

STATE OF ILLINOIS
DEPARTMENT OF PUBLIC WORKS AND BUILDINGS
DIVISION OF HIGHWAYS
R. C. ABUTMENTS FOR DECK GIRDER BRIDGE
HEIGHT OVER ALL 16 FEET

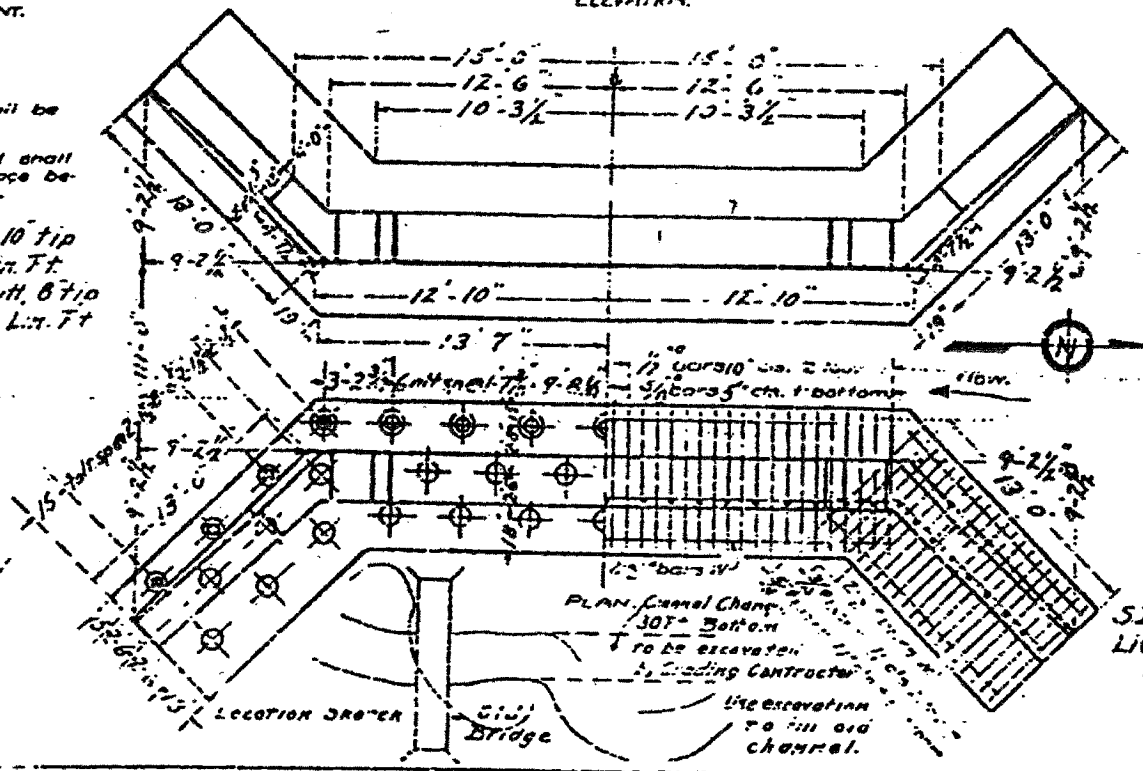
ROUTE NO.	COUNTY	SEC.	TOTAL SHEETS	SHEET NO.	Sheet No. 4 4 Sheets.
116	Livingston	113	45	43	



Class A concrete shall be used throughout.
Exposures: 1:2:4.
All reinforcing steel shall be securely wired in place before concrete is poured.

12 Unt. Piles 12 butt. 10 tip
300# 600 Est. Lin. Ft.

10 Unt. Piles 10 butt. 8 tip
300# 750 Est. Lin. Ft.



BILL OF MATERIAL

Bars	No.	Size	Length
1	52	2 1/2"	9'-0"
2	8	2 1/2"	10'-6"
3	24	2 1/2"	13'-0"
4	16	2 1/2"	8'-6"
5	12	2 1/2"	7'-0"
6	22	2 1/2"	25'-0"
7	22	2 1/2"	19'-0"
8	8	2 1/2"	8'-6"
9	12	3 1/2"	6'-5"
10	104	3/8"	6'-0"
11	130	3/8"	7'-6"
12	26	3/8"	7'-6"
13	62	3/8"	12'-6"
14	52	3/8"	7'-6"
15	8	3/8"	19'-0"
16	16	3/8"	19'-6"

FOR INFORMATIONAL
USE ONLY
(1927 PLANS)

SD Rte. 116 Sect. 113-B
Livingston County
Station 436+75

REVISIONS		ILLINOIS DEPARTMENT OF TRANSPORTATION EXISTING PLANS F.A.P. 681 (IL116) OVER FELKY SLOUGH SECTION 113BR-2 LIVINGSTON COUNTY STATION 436+75.00 STRUCTURE NO. 053-0075 DESIGNED BY: JML DATE: 12/09/05
NAME	DATE	
		DRAWN BY: DJM CHECKED BY: MSW