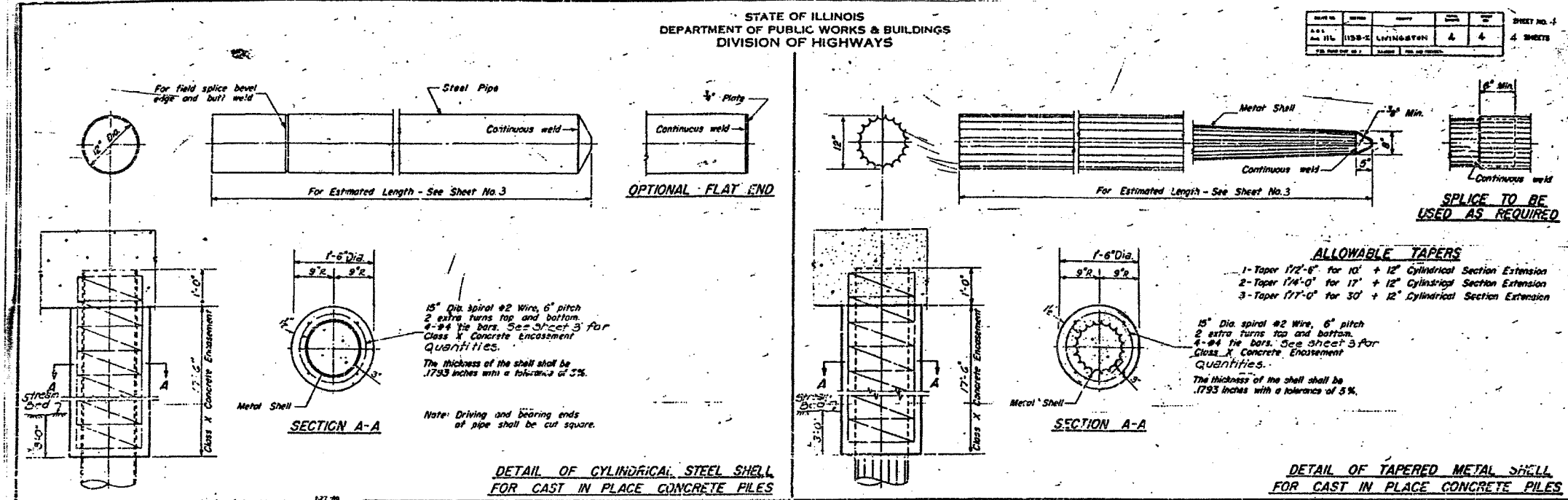


F.A.P. RTE.	SECTION	COUNTY	TOTAL SHEETS	SHEET NO.
681	113BR-2	LIVINGSTON	47	41
STA.		TO STA.		
FED. ROAD DIST. NO.		ILLINOIS FED. AID PROJECT		

STATE OF ILLINOIS
DEPARTMENT OF TRANSPORTATION

SHEET NO. 629

OF 31 SHEETS



Station	Soils	Penetration	Moisture	Unit Weight	Notes
635.00	Very Stiff Gray CLAY (fill)	15	2.9	18	
635.00	Stiff to medium Brownish Black & Olive Gray SILTY CLAY & CLAY (natural)	15	2.9	18	
635.00	Medium Gray Angular & Sub-angular COARSE SAND & FINE GRAVEL	18	2.7	20	
635.00	Very Stiff Gray CLAY (fill) to SILTY CLAY (lacustrine)	22	2.9	19	
635.00	Hard Gray CLAY (fill)	21	2.8	17	
635.00	Medium & Coarse Gray Angular & Sub-angular COARSE SAND & MEDIUM GRAVEL	15	2.7	20	
635.00	Very Stiff Gray CLAY (fill) to CLAY (lacustrine)	14	2.8	21	
635.00	Stiff Gray CLAY (lacustrine) Hard with thin sand seams	11	2.9	22	

FOR INFORMATIONAL
USE ONLY
(1965 PLANS)

FILE & BIDDING DETAILS
S.D. RITE INC. SEC. 113-2
LIVINGSTON COUNTY
STA. 436+75

DESIGNED BY: JML
DRAWN BY: DJM
DATE: 12/09/05
CHECKED BY: MSW

REVISIONS		ILLINOIS DEPARTMENT OF TRANSPORTATION EXISTING PLANS F.A.P. 681 (IL116) OVER FELKY SLOUGH SECTION 113BR-2 LIVINGSTON COUNTY STATION 436+75.00 STRUCTURE NO. 053-0075 DESIGNED BY: JML DATE: 12/09/05	DRAWN BY: DJM CHECKED BY: MSW
NAME	DATE		