

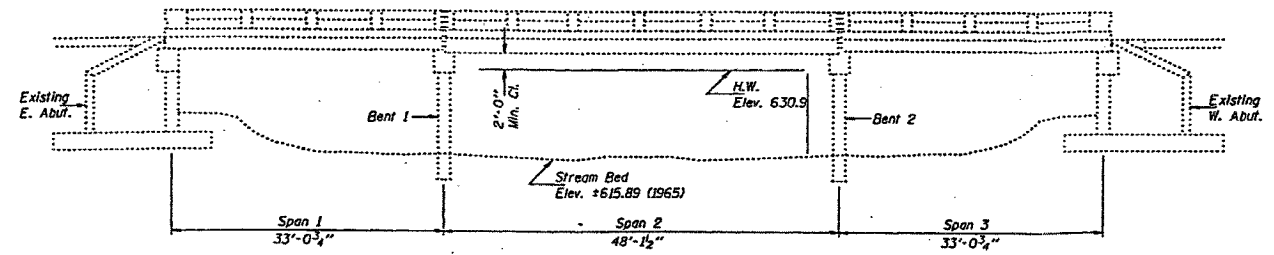
STATE OF ILLINOIS  
DEPARTMENT OF TRANSPORTATION

F.A.P. RTE.	SECTION	COUNTY	TOTAL SHEETS	SHEET NO.
681	1138R-2	LIVINGSTON	47	42
STA.		TO STA.		
FED. ROAD DIST. NO.		ILLINOIS FED. AID PROJECT		

SHEET NO. B30  
OF 31 SHEETS

STATE OF ILLINOIS  
DEPARTMENT OF TRANSPORTATION

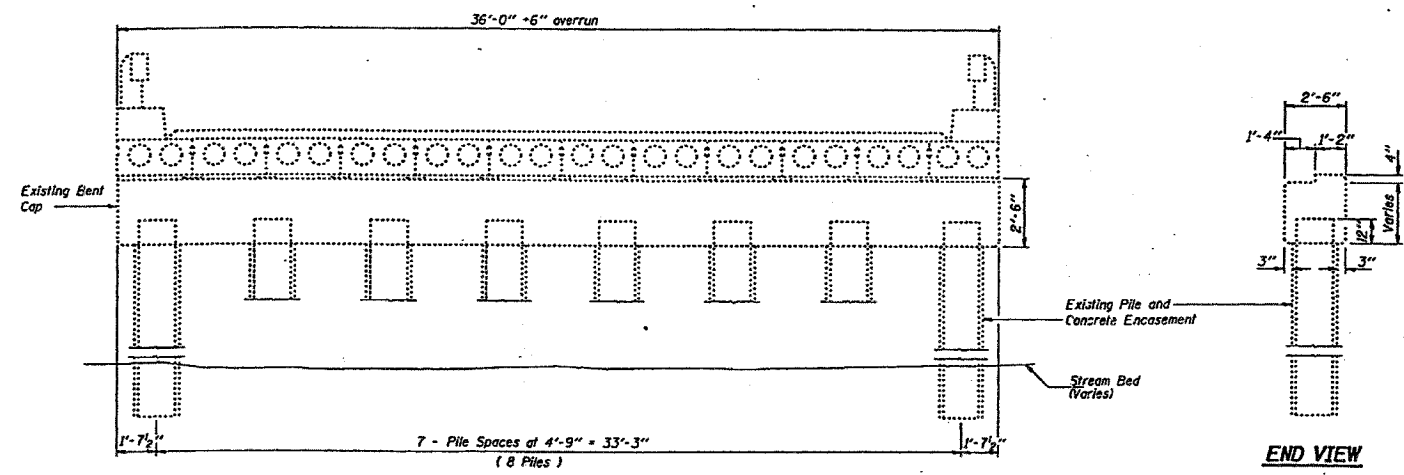
PROJECT NO.	SECTION	COUNTY	TOTAL SHEETS	SHEET NO.
S.B.I. 1138-1	LIVINGSTON		2	1



**GENERAL NOTES**

Plan dimensions and details relative to existing structure have been taken from existing plans and are subject to nominal construction variations. It shall be the Contractor's responsibility to verify such dimensions and details in the field and make necessary approved adjustments prior to construction or ordering of materials. Such variations shall not be cause for additional compensation for a change in the scope of the work, however, the Contractor will be paid for the quantity actually furnished at the unit price bid for the work.

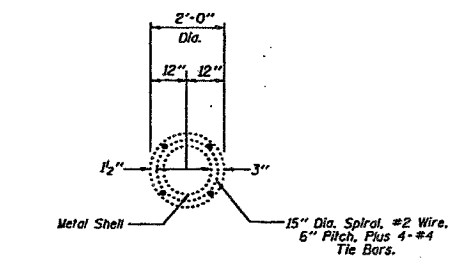
Traffic control shall be determined by the District.



**TOTAL BILL OF MATERIAL**

ITEM	UNIT	QUANTITY
Polymer Modified Portland Cement Mortar	Cu. Ft.	2.4
Composite Fiber Wrap	Sq. Ft.	905

The Polymer Modified Portland Cement Mortar quantity has been estimated assuming a depth of 1 inch. The contractor will be paid for the actual cubic feet of epoxy mortar placed.



**PILE BENT REPAIR**  
S.B.I. RTE. 116 SEC. 1138-1  
LIVINGSTON COUNTY  
STA. 436+75  
STR. 053-0075

FOR INFORMATIONAL  
USE ONLY  
(1996 PLANS)

DESIGNED	C.H.M.	EXAMINED	April 24, 1996 <i>John E. Allen</i> ENGINEER OF STRUCTURES
CHECKED	M.D.C.	PASSED	
DRAWN	J. MARCH	APPROVED	ENGINEER OF BRIDGES AND STRUCTURES
CHECKED	C.H.M. M.D.C.	APPROVED	DIRECTOR OF HIGHWAYS

Revised 07-22-97 V.H.V.

projects\jkm00016\0530075.dgn Jul. 22, 1997 08:35:56

REVISIONS		ILLINOIS DEPARTMENT OF TRANSPORTATION EXISTING PLANS F.A.P. 681 (IL116) OVER FELKY SLOUGH SECTION 1138R-2 LIVINGSTON COUNTY STATION 436+75.00 STRUCTURE NO. 053-0075 DESIGNED BY: JML DATE: 12/09/05
NAME	DATE	
		DRAWN BY: DJM CHECKED BY: MSW