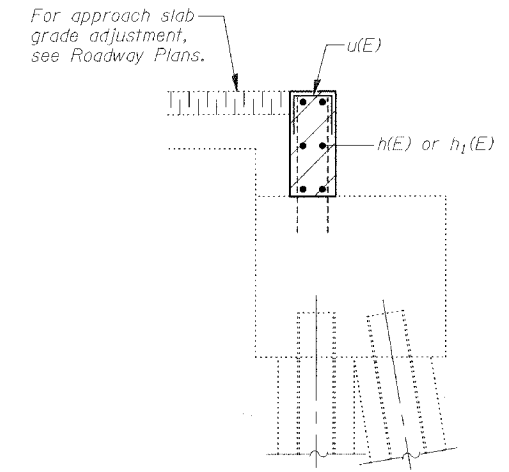
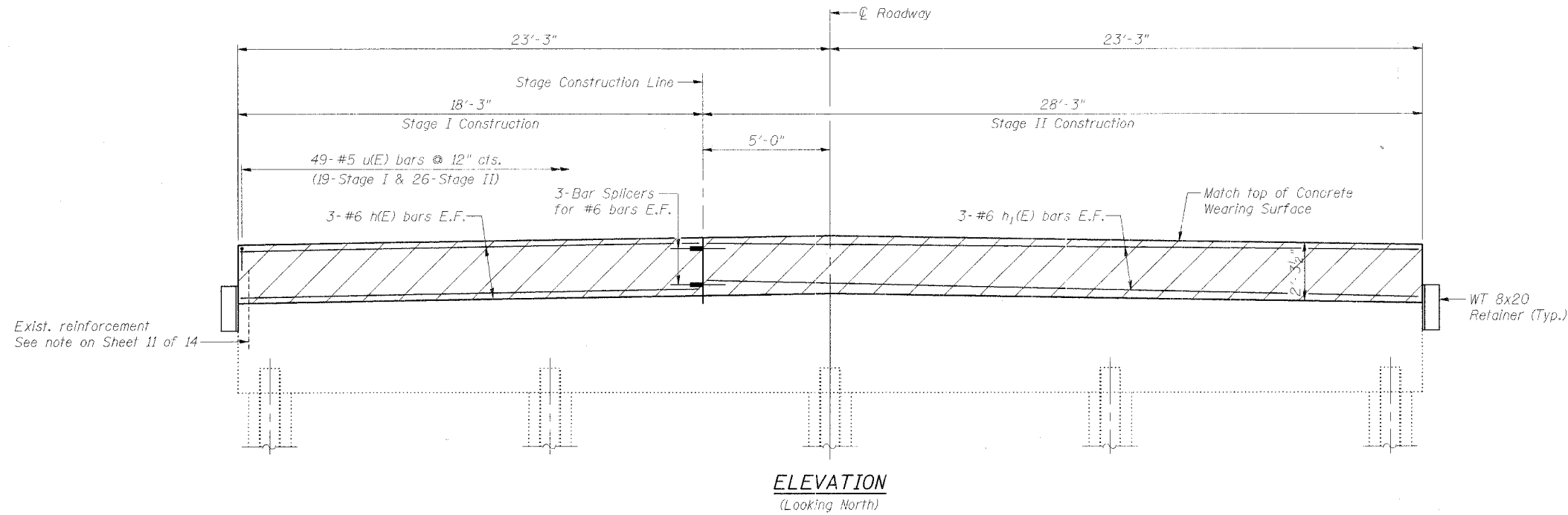
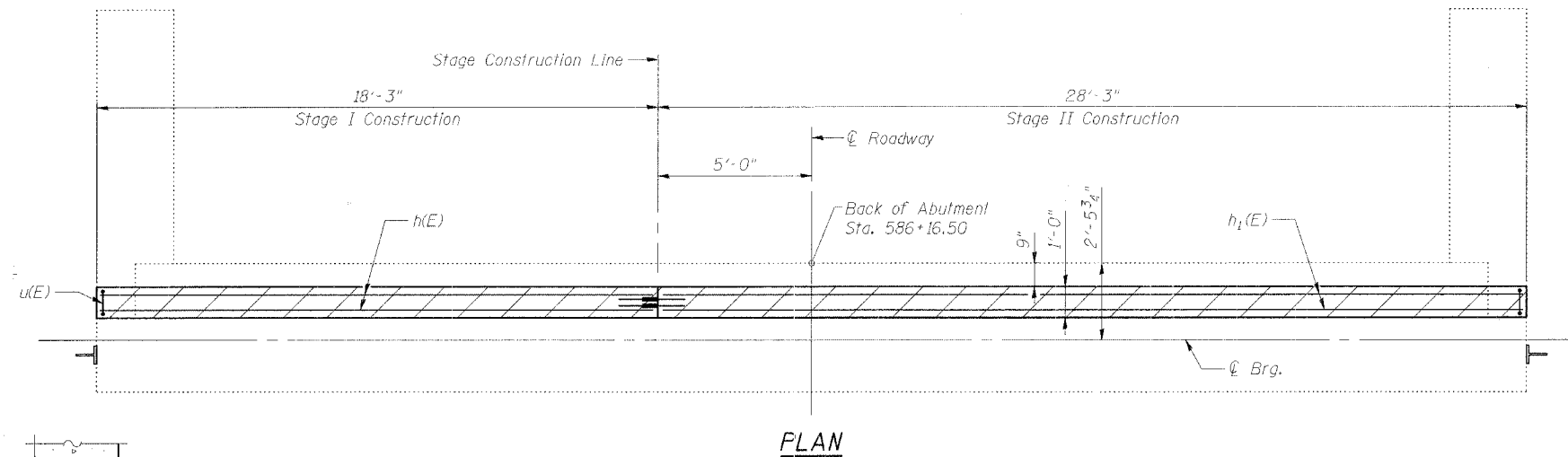


STATE OF ILLINOIS
DEPARTMENT OF TRANSPORTATION

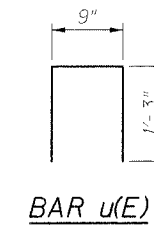
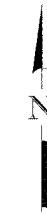
ROUTE NO.	SECTION	COUNTY	TOTAL SHEETS	SHEET NO.	SHEET NO. 12
FAP 68	105 BR-1	LIVINGSTON	45	23	14 SHEETS
FED. ROAD DIST. NO.	ILLINOIS	FED. AID PROJECT	Contract #66566		



SECTION THRU ABUTMENT



PLAN



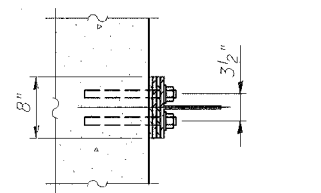
BAR u(E)

BILL OF MATERIAL
ONE ABUTMENT

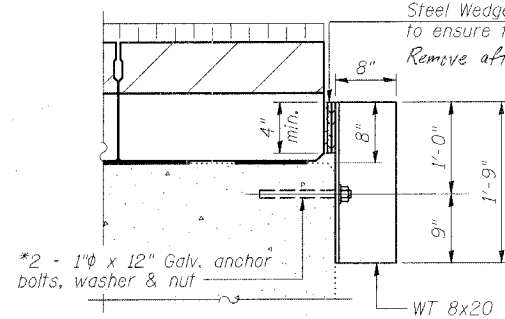
Bar	No.	Size	Length	Shape	
h(E)	6	#6	18'-0"	—	
h1(E)	6	#6	28'-0"	—	
u(E)	98	#5	3'-3"	□	
Concrete Structures				Cu. Yd.	3.7
Reinforcement Bars, Epoxy Coated				Pound	1830
Concrete Removal				Cu. Yd.	5.5

Reinforcement designated (E) shall be epoxy coated.

Note:
Hatched area shall be poured after concrete wearing surface is in place.
Retainer and shims shall be in-place prior to grouting of the shear keys.
After blockouts are poured and cured the retainer shall be removed.
Anchor bolts may be left in place.



Steel Wedges - Taper to ensure tight fit.
Remove after blockout has cured.



RETAINER DETAIL

* Drill and epoxy grout in accordance with Art. 584 of the Std. Specs.

REVISIONS	
NAME	DATE

ILLINOIS DEPARTMENT OF TRANSPORTATION

NORTH ABUTMENT

FAP RTE 68 (IL 23) OVER WOLF CREEK
SECTION 105 BR-1
LIVINGSTON COUNTY
STATION 586+62
S.N. 053-0148

SCALE: VERT.
SCALE: HORIZ.
DATE: 9/6/05

DRAWN BY: LANDREY
DESIGNED BY: SANFORD
CHECKED BY: TRELLO



COMPUTER FILE NO.
SN053-0148_NAB
PROJECT 03236 WO-11
12/16/05-MML

FILE NAME = J:\03236\w\01\dr\dwg\mgs\st053-048\NAB.dgn
PLOT SCALE = 0.0000
PLOT TIME = 10:05 AM
OPERATOR = michaell