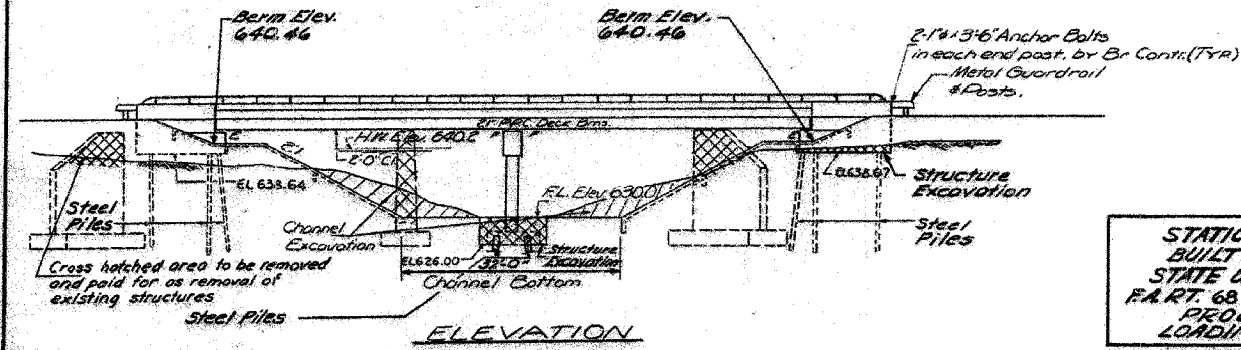


F.A.P. RTE.	SECTION	COUNTY	TOTAL SHEETS	SHEET NO.
68	105 BR-1	LIVINGSTON	45	26
STA.		TO STA.		
FED. ROAD DIST. NO.		ILLINOIS	FED. AID PROJECT	

DATE	ISSUED	BY	NO.	REV.	SHEET NO. /
10/25/05	10/25/05	LIVINGSTON	81	39	7 SHEETS

STATE OF ILLINOIS  
DEPARTMENT OF TRANSPORTATION

B.M. Chiseled Square in N.E. Wingwall Bridge 14' Lt.  
Sta 586+02 Elev. 641.70  
Existing Structure: Built as SBI 118, Sec. 105B Sta 586+52  
in 1928 Superstr. RC thru Girder Substr. RC Abutts &  
Solid Pier. Contractor shall remove existing  
structure after completion of run-around.  
No Salvage.



STATION 586+62  
BUILT 197 BY  
STATE OF ILLINOIS  
F.A.R.T. 68 SEC. 105-BR-1  
PROJ. F-68(14)  
LOADING HS-20  
NAME PLATE  
(See Std. 2113)

GENERAL NOTES

All reinforcement bars shall be lapped 24 diameters unless otherwise shown  
All structural steel shall be shop painted with 2 coats of basic lead silico chromate paint.  
Slope wall shall be reinforced with welded wire fabric 6" x 6" mesh, weighing 58# per 100 sq. ft.  
Layout of slope walls may be varied in the field to suit ground conditions as directed by the Engineer.  
The Contractor shall drive 2 steel test piles in a permanent location, 1 each at North Abut. and pier, as directed by the Engineer before ordering the remainder of piles.  
The embankment configuration shown shall be the minimum embankment that must be constructed prior to construction of the abutments.  
Protective Coat shall not be applied to surfaces to which Waterproofing Membrane System is applied.  
Expansion guards which are not cast in the precast unit shall be fabricated and erected in accordance with Article 503.07(c) of the Standard Specifications and are included in quantity of structural steel.  
The concrete rail section above top of the D.B. shall be constructed of Class X Concrete, except the aggregates shall conform to the requirements of Handrail concrete.  
The top surface of the beams shall be finished in accordance with Art. 505.06 of the Standard Specifications except that the surface shall not be roughened by brooming. The finished surface shall be free of depressions or high spots with sharp corners.

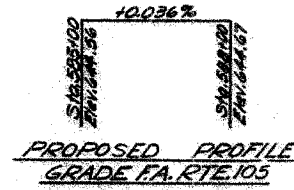
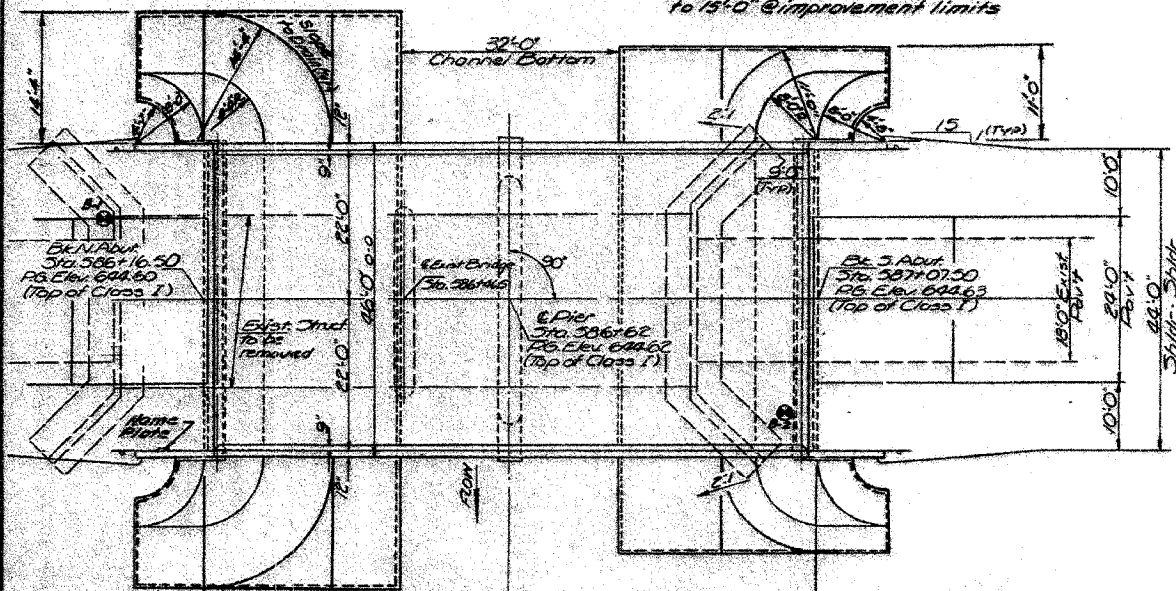
TOTAL BILL OF MATERIAL

ITEM	Unit	Super	Sub	Total
Channel Excavation	Cu. Yds.		600	600
Bituminous concrete Surface Course, Class I	Tons	45		45
Removal of Existing Structures	Each		1	1
Structure Excavation	Cu. Yds.		60	60
Protective Coat	Sq. Yds.	81		81
Class X Concrete	Cu. Yds.	21.3	130.1	151.6
Precast Prestressed Conc. Deck Beams (21')	Sq. Ft.	4008		4008
Structural Steel	Lbs.	6160		6160
Aluminum Rolling	Lin. Ft.	211		211
Reinforcement Bars	Lbs.	2800	9700	12500
Steel Piles HP 10x42	Lin. Ft.		1160	1160
Test Pile Steel HP 10x42	Each		2	2
Name Plates	Each		1	1
Slope Wall 6"	Sq. Yds.	610		610
Preformed Joint Sealer 2 1/2"	Lin. Ft.	92		92
Waterproofing Membrane System	Sq. Yds.	414		414
Portland Cement Mortar Faring Course	Ln. Ft.	958		958

\* Bit. Surfacing Quantity is from end to end of D.B. Bms.  
\*\* See Special Provisions.

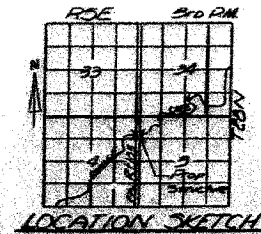
Limits for channel improvement 60' upstream and 125' downstream from existing transition point of Channel. From 22'0" @ structure to 15'0" @ improvement limits

Note: for Borings see the Proposal.



WATERWAY INFORMATION

Drainage Area: 20.50 Miles  
Present Opening: 440 Sq. Ft.  
Road Opening: 500 Sq. Ft.  
Prop. Opening: 500 Sq. Ft.  
Q100: 2512 cfs  
Created Head: .025'



PROJECT F-68(14)  
GENERAL PLAN and ELEVATION  
F.A. RTE. 105 over WOLF CREEK  
F.A. RTE. 105 SEC. 105-BR-1  
LIVINGSTON COUNTY  
STATION 586+62.00

DESIGNED	J. J. Hurd	DATE	October 24, 1974
CHECKED	G.E.O.		
DESIGNED	Ferrando		
CHECKED	G.E.O.		

DESIGN STRESSES  
FIELD UNITS  
F<sub>c</sub> = 1400 psi (Parapet Curbs Sub)  
F<sub>c</sub> = 20000 psi (Reinf.)  
v<sub>c</sub> = 75 psi (Figs.)  
n = 10  
Allow for 25% S.F. for F<sub>c</sub> & v<sub>c</sub>  
LOADING HS-20-44

PRESTRESSED UNITS  
F<sub>c</sub> = 5000 psi  
F<sub>c</sub> = 4000 psi  
F<sub>s</sub> = 170000 psi (1/2" Strands)  
F<sub>s</sub> = 183000 psi (1/2" Strands)



FOR INFORMATION ONLY

REVISIONS	
NAME	DATE

ILLINOIS DEPARTMENT OF TRANSPORTATION  
EXISTING BRIDGE PLANS  
FAP ROUTE 68 (IL RTE. 23)  
SECTION 105 BR-1  
LIVINGSTON COUNTY  
SCALE: VERT. 1" = 10'  
HORIZ. 1" = 40'  
DATE: 11/15/05  
DRAWN BY: SUTHEARD  
CHECKED BY: BOTT  
GREENE & BRADFORD, INC.  
OF SPRINGFIELD  
COMPUTER FILE NO.  
03236.W011.EPLN  
PROJECT 03236 W011  
11/15/05 - MDS

PLT DATE = 12/21/2005  
FILE NAME = J:\03236\w011\Drawings\W011.EPLN.dgn  
PLT SCALE = 5/8" = 1'-0"  
REFERENCE = REF-114  
OPERATOR = mds