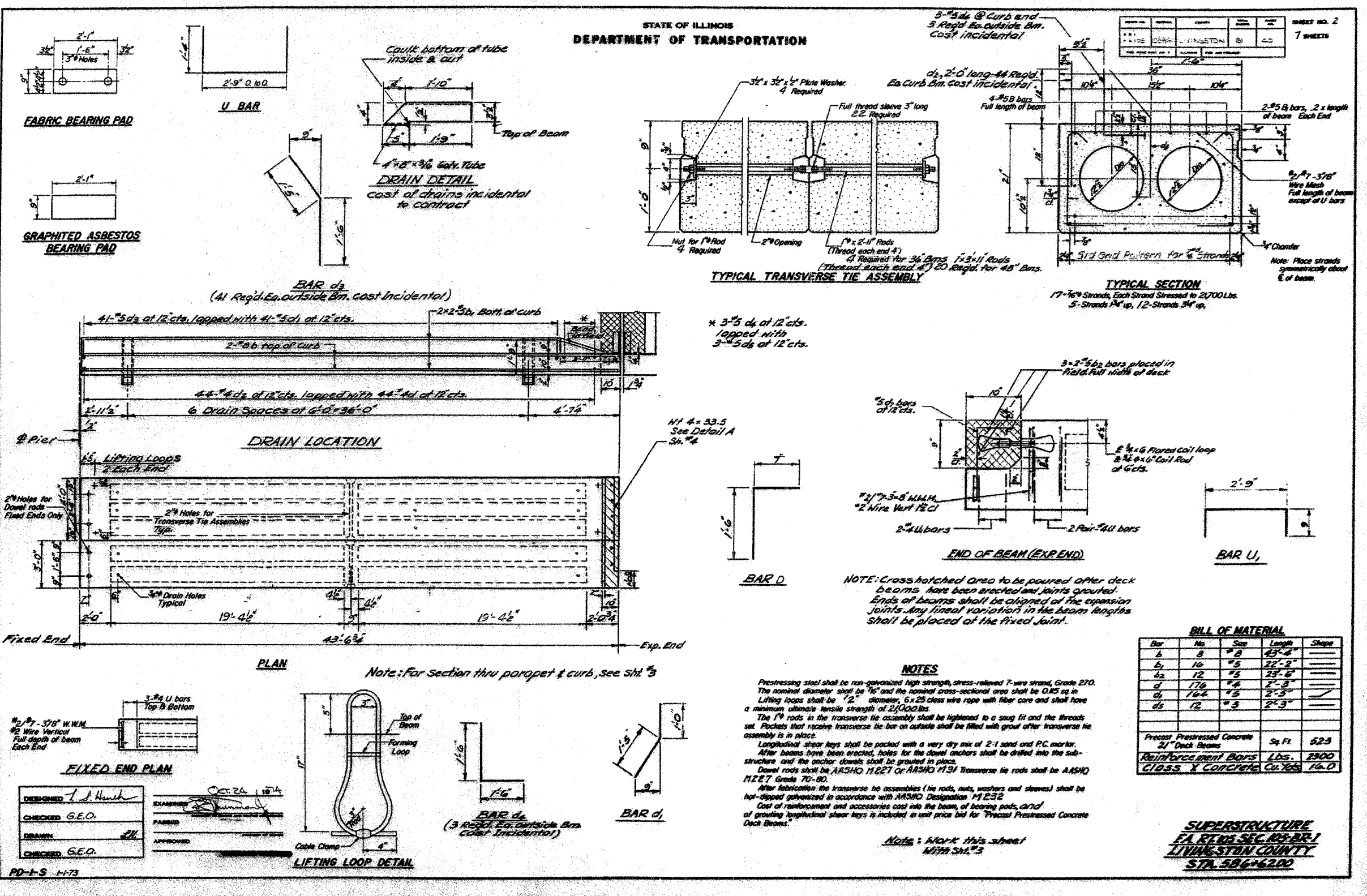


F.A.P. RTE.	SECTION	COUNTY	TOTAL SHEETS	SHEET NO.
68	105 BR-1	LIVINGSTON	45	27
STA.		TO STA.		
FED. ROAD DIST. NO.		ILLINOIS	FED. AID PROJECT	

SHEET NO. 2
7 SHEETS

STATE OF ILLINOIS
DEPARTMENT OF TRANSPORTATION



FOR INFORMATION ONLY

SUPERSTRUCTURE
EA. RING SEC. 105 BR-1
LIVINGSTON COUNTY
STA. 586+620

ILLINOIS DEPARTMENT OF TRANSPORTATION
EXISTING BRIDGE PLANS
FAP ROUTE 68 (IL RTE. 23)
SECTION 105 BR-1
LIVINGSTON COUNTY

REVISIONS

NAME	DATE

SCALE: VERT. HORIZ.
DATE: 11/15/05
DRAWN BY: SUTHEARD
CHECKED BY: BOTT
GREENE & BRADFORD, INC.
CONSULTING ENGINEERS
OF SPRINGFIELD
COMPUTER FILE NO. 03236.W011.EPLN
PROJECT 03236 W011
11/15/05 - MDS

PLOT DATE = 12/21/2005
FILE NAME = I:\03236\w011\gr-brngs\03236_w011.EPLN.dgn
REFERENCE = 03236.W011
OPERATOR = michael