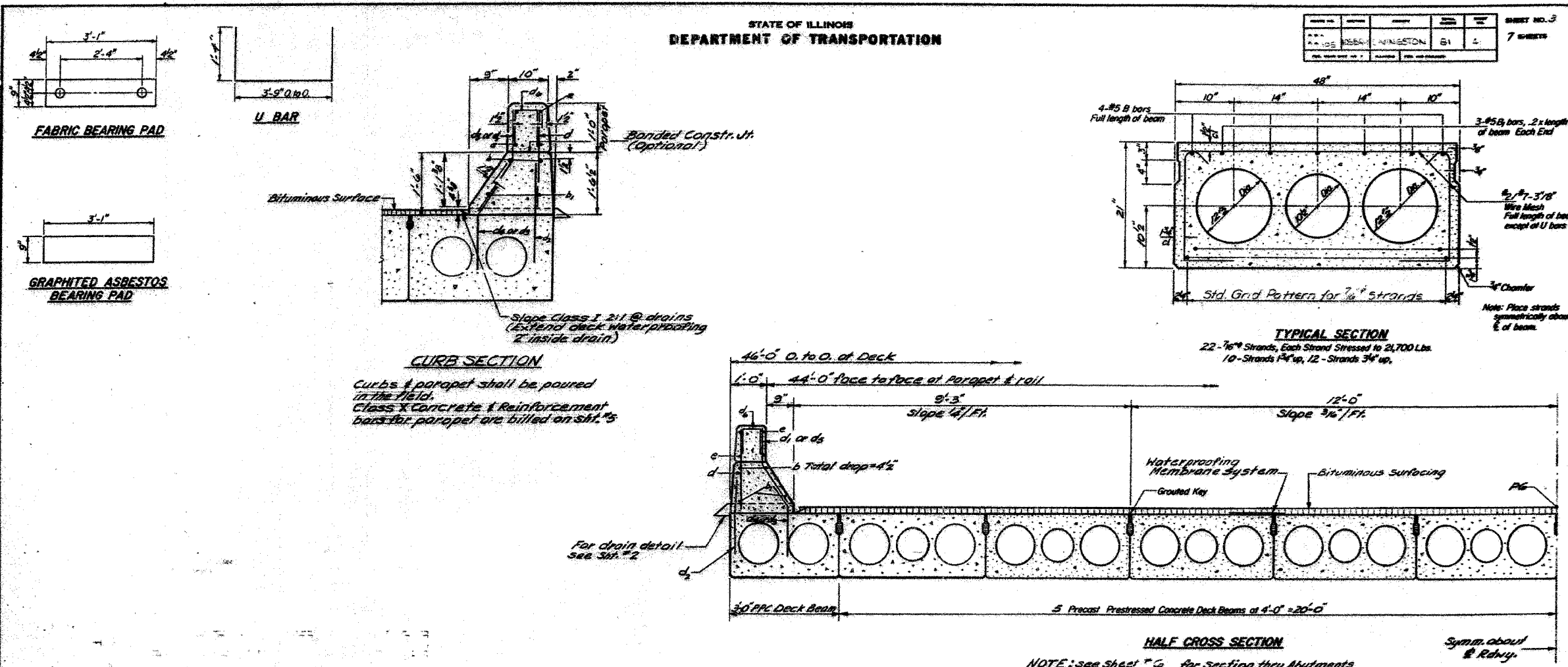


F.A.P. RTE.	SECTION	COUNTY	TOTAL SHEETS	SHEET NO.
68	105 BR-1	LIVINGSTON	45	28
STA.		TO STA.		
FED. ROAD DIST. NO.		ILLINOIS FED. AID PROJECT		

STATE OF ILLINOIS
DEPARTMENT OF TRANSPORTATION

PROJECT NO.	SECTION	SHEET NO.	TOTAL SHEETS
66-105	BRIDGE LIVINGSTON	61	7



For drain detail see sheet #2

NOTE: see sheet #6 for Section thru Abutments

Mark this sheet with sheet #2

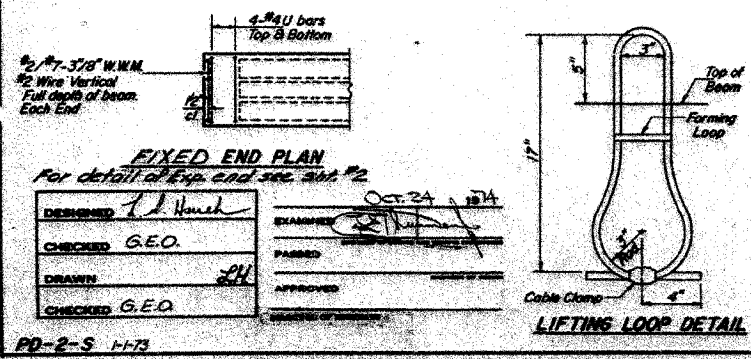
BILL OF MATERIAL

Bar	No.	Size	Length	Shape
Precast Prestressed Concrete	Sq Ft		3485	
21" Deck Beams				

NOTES

Prestressing steel shall be non-galvanized high strength, stress-relieved 7-wire strand, Grade 270. The nominal diameter shall be 7/16" and the nominal cross-sectional area shall be 0.85 sq. in. Lifting loops shall be 3/8" diameter, 6x25 class wire rope with fiber core and shall have a minimum ultimate tensile strength of 33000 lbs. The 1/4" rods in the transverse tie assembly shall be tightened to a snug fit and the threads set. Pockets that receive transverse tie bar on outside shall be filled with grout after transverse tie assembly is in place. Longitudinal shear keys shall be packed with a very dry mix of 2-1 sand and P.C. mortar. After beams have been erected, holes for the dowel anchors shall be drilled into the substructure and the anchor dowels shall be grouted in place. Dowel rods shall be AASHTO M227 or AASHTO M13. Transverse tie rods shall be AASHTO M227, Grade 70-80. After fabrication the transverse tie assemblies (tie rods, nuts, washers and sleeves) shall be hot-dipped galvanized in accordance with AASHTO Designation M129E. Cost of reinforcement and accessories cast into the beams, or bearing pads, and of grouting longitudinal shear keys is included in unit price bid for Precast Prestressed Concrete Deck Beams.

SUPERSTRUCTURE
E.A. RITNER SOC. CO. BR-1
LIVINGSTON COUNTY
STA. 506+62.00



DESIGNED	J. H. Hume	CHECKED	G.E.O.
DRAWN	ZH	APPROVED	
CHECKED	G.E.O.		

REVISIONS

NAME	DATE

ILLINOIS DEPARTMENT OF TRANSPORTATION
EXISTING BRIDGE PLANS
FAP ROUTE 68 (IL RTE. 23)
SECTION 105 BR-1
LIVINGSTON COUNTY

SCALE: VERT. _____
HORIZ. _____
DATE: 11/15/05

DRAWN BY: SUTHEARD
CHECKED BY: BOTT

GREENE & BRADFORD, INC.
CONSULTING ENGINEERS
OF SPRINGFIELD

COMPUTER FILE NO.
03236.W011.EPLN
PROJECT 03236 W011
11/15/05 - MDS

FOR INFORMATION ONLY

PLDT DATE = 12/21/2005
FILE NAME = J:\03236\03236\03236.W011.EPLN.dgn
USER = JHUMES
REFERENCE = 03236 / IN.
OPERATOR = michella