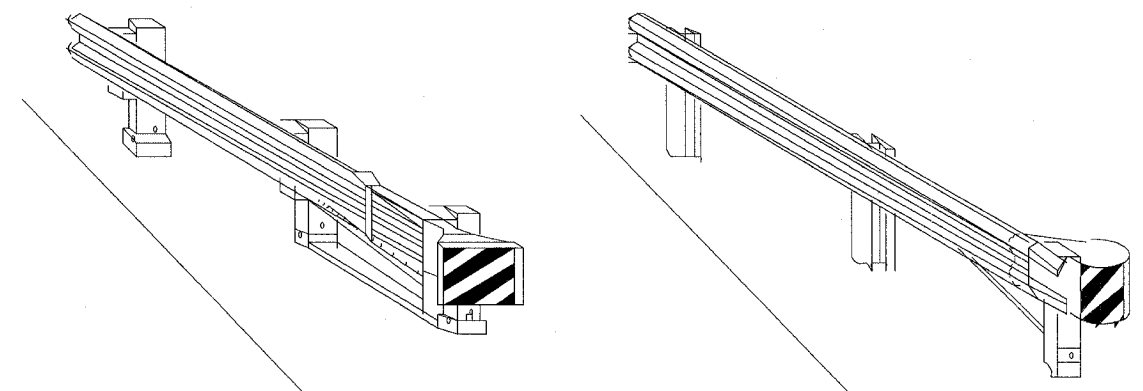
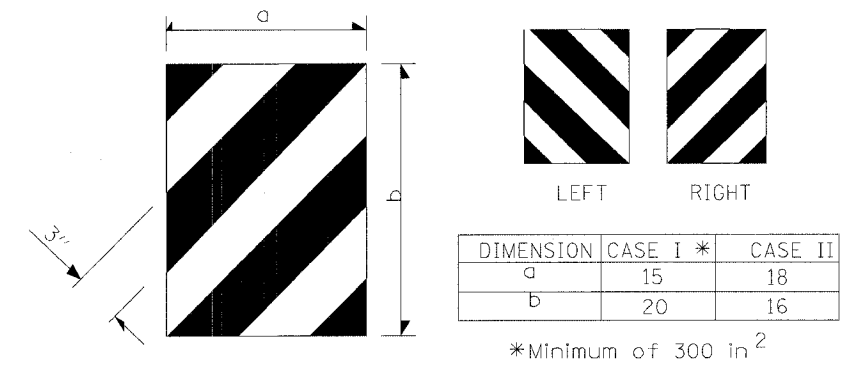


F.A.P. RTE.	SECTION	COUNTY	TOTAL SHEETS	SHEET NO.
68	105 BR-1	LIVINGSTON	45	33
STA.		TO STA.		
FED. ROAD DIST. NO.	ILLINOIS	FED. AID PROJECT		



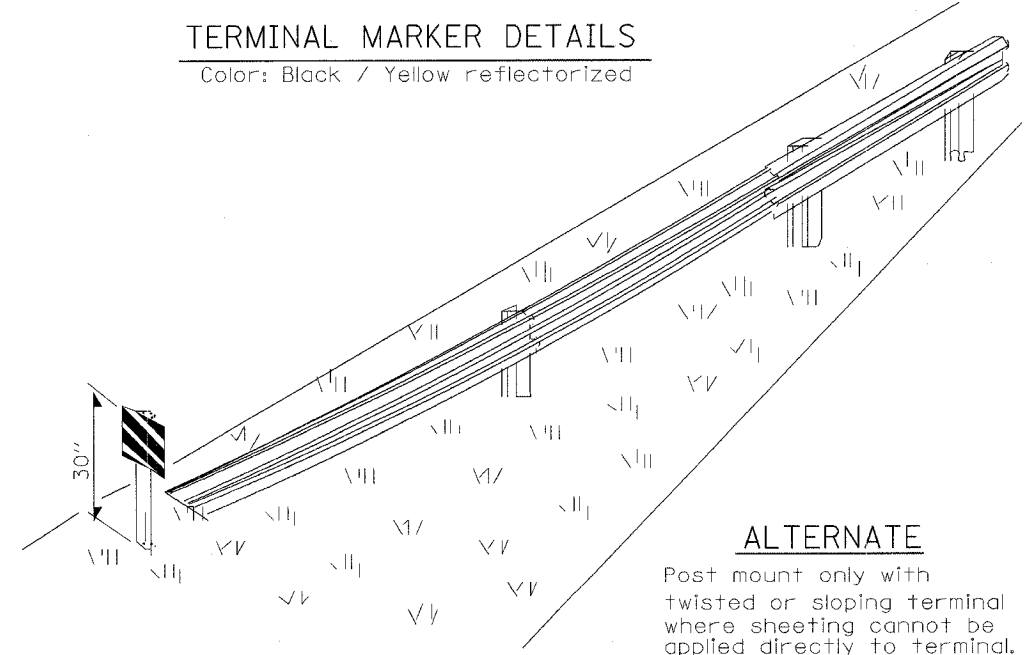
CASE I

CASE II



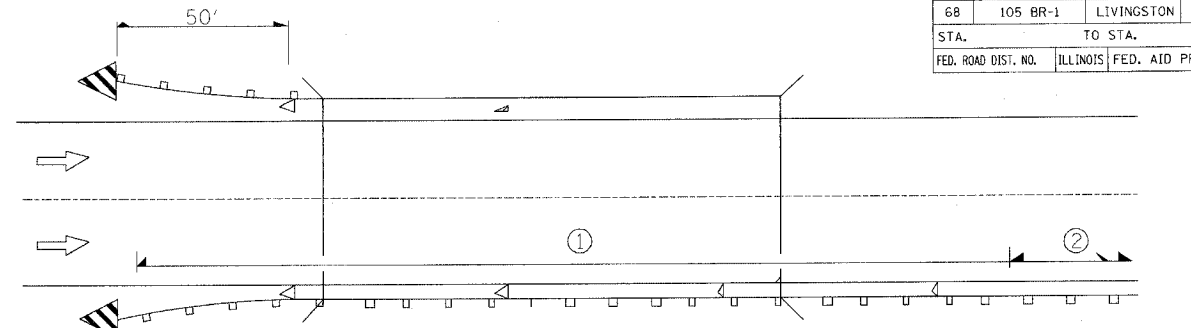
**TERMINAL MARKER DETAILS**

Color: Black / Yellow reflectorized



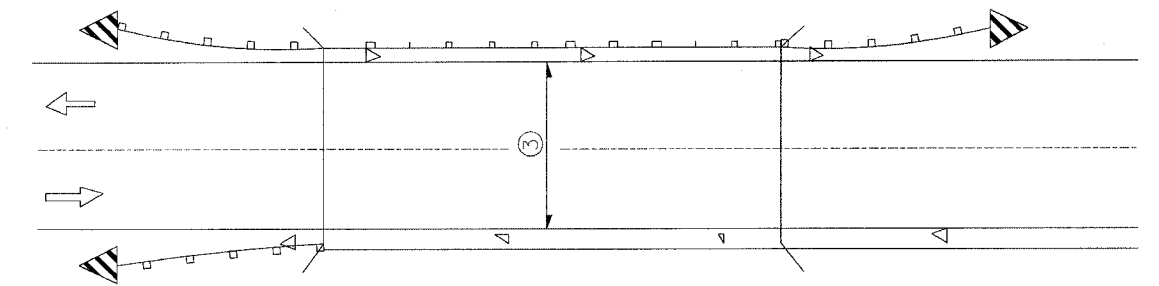
**ALTERNATE**

Post mount only with twisted or sloping terminal where sheeting cannot be applied directly to terminal.



① Spacing 80 ft max. for first 400 ft or curve spacing shown in Standard 635001, whichever is less (min. 4 reflectors regardless of length).  
 ② After 400 ft, transition to normal delineator spacing shown in Standard 635001, and continue as required.

ONE-WAY TRAFFIC

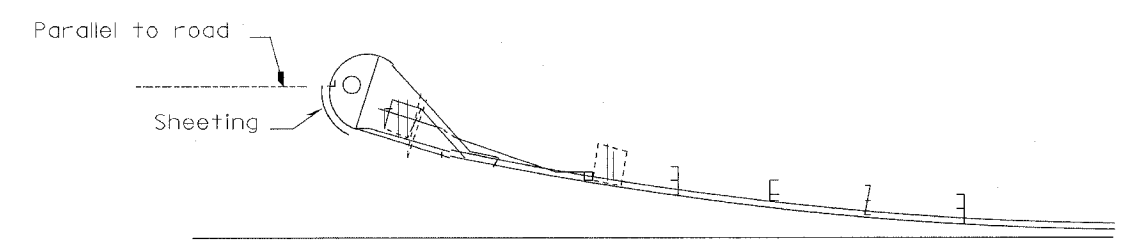


③ Bidirectional silver/silver should be used in lieu of monodirectional silver on both sides of two-lane bridges where the pavement is less than 24" wider than the pavement approaching the bridge.

- ◁ Monodirectional silver
- ◄ Monodirectional amber
- ◄ Terminal Marker - Black/Yellow Left or Right as appropriate

TWO-WAY TRAFFIC

**GUARDRAIL / BARRIER WALL / BRIDGE RAIL REFLECTORS**



SHEETING POSITION: CASE II

635-1

PLOT DATE = 12/21/2005  
 FILE NAME = J:\03236\w011\Drawings\03236.W011.DET.dgn  
 PLOT SCALE = 50.000000 / 1 IN.  
 REFERENCE = .REF.  
 OPERATOR = mch114

REVISIONS	
NAME	DATE

ILLINOIS DEPARTMENT OF TRANSPORTATION

**DETAILS**

FAP ROUTE 68 (IL RTE. 23)  
 SECTION 105 BR-1  
 LIVINGSTON COUNTY

SCALE: VERT. \_\_\_\_\_  
 HORIZ. \_\_\_\_\_  
 DATE: \_\_\_\_\_

DRAWN BY: BISHOP  
 CHECKED BY: BOTT

COMPUTER FILE NO. 03236.W011.DET  
 PROJECT 03236 MDS  
 11/15/05 - MDS

GREENE & BRADFORD, INC.  
 OF SPRINGFIELD  
 REGISTERED PROFESSIONAL ENGINEERS  
 PROFESSIONAL ENGINEERING COMPANY  
 1011 W. MONROE ST. SUITE 100  
 SPRINGFIELD, ILLINOIS 62761-1000  
 (618) 266-2273 FAX (618) 266-2274