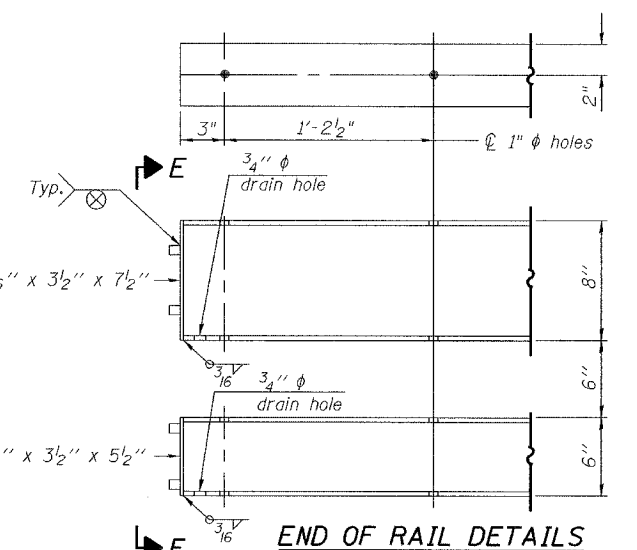
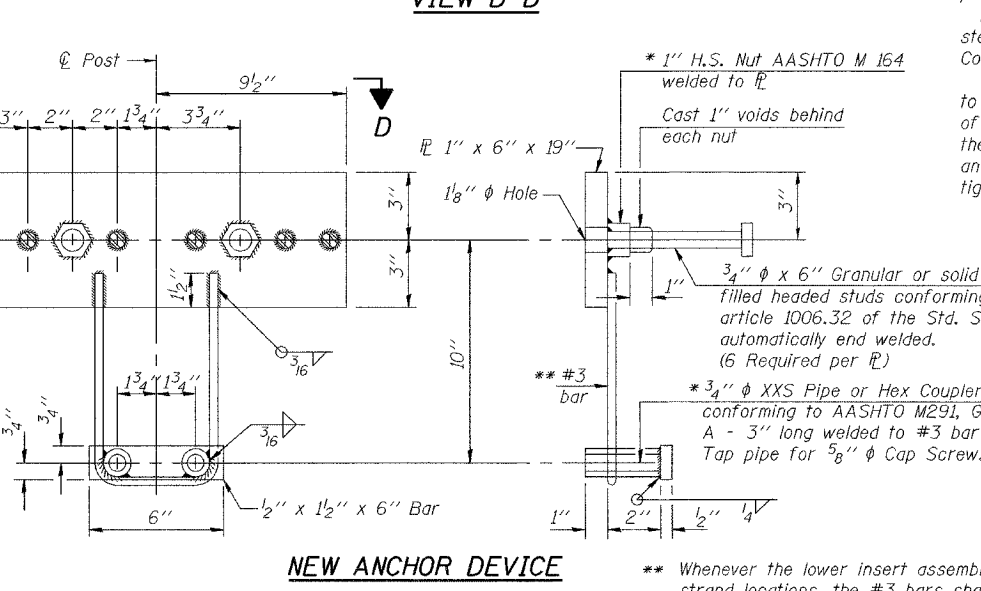
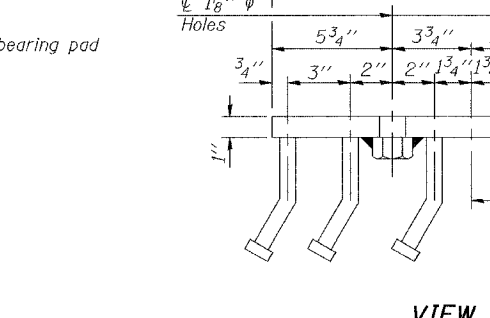
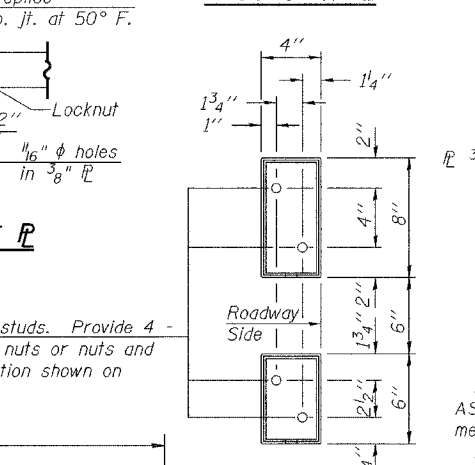
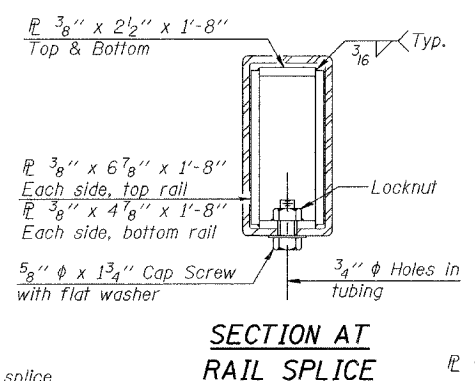
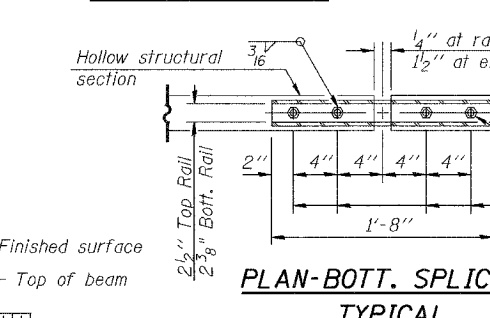
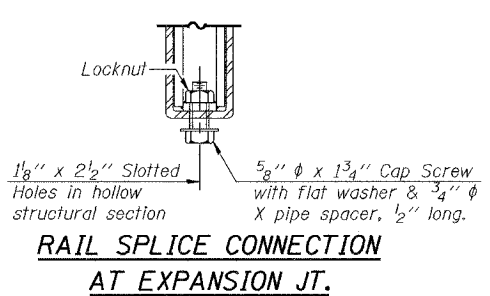


NOTES

Posts located at the existing approach beams shall be attached utilizing the existing anchor devices. Cost included with Steel Bridge Rail, Type SM.

*** 2 1/2" replaces 3" at exist. approach beams
 10 1/2" replaces 10" at exist. approach beams
 4" replaces 3 3/4" at exist. approach beams
 1'-7 1/2" replaces 1'-8" at exist. approach beams



NOTES

Hollow structural sections shall conform to the requirements of ASTM designation A 500 Grade B Structural Steel Tubing and shall meet the longitudinal CVN requirements of 15 ft-lbs at 0° F.

All other steel shapes and plates shall conform to the requirements of AASHTO M 270 Grade 36 except posts and angles shall conform to AASHTO M 270, Grade 50.

Bolts, cap screws, and nuts shall conform to the requirements of ASTM designation A 307 except for high strength bolts, nuts and washers noted which shall conform to AASHTO M 164.

All bolts, nuts, cap screws, washers and lock washers shall be galvanized according to AASHTO M 232.

All posts, railing, rail splices, anchor devices and angles shall be galvanized after shop fabrication according to AASHTO M 111 and ASTM A 385. Galvanized rail shall not be painted.

Railing shall be according to Section 509 of the Standard Specifications, except as noted, and will be paid for at the contract unit price per foot for Steel Bridge Rail, Type SM.

All field drilled holes shall be coated with an approved zinc rich paint before erection.

For multi-span bridges, sufficient 1/4" x 6" x 1'-2" galvanized steel shims shall be provided to align rail between adjacent spans. Cost included with Steel Bridge Rail, Type SM.

The 3/4" high strength bolts used to connect the 6 x 4 x 3/4 angles to the post shall be tightened according to Article 505.04(f)(2) of the Standard Specifications. The 1" high strength bolts connecting the angles to the concrete shall be tightened to a snug fit and given an additional 1/8 turn. The 5/8" cap screws in bottom of posts shall be tightened to a snug fit only.

BILL OF MATERIAL

Item	Unit	Quantity
Steel Bridge Rail, Type SM	Foot	145

ILLINOIS DEPARTMENT OF TRANSPORTATION

SHEET TITLE TYPE SM STEEL BRIDGE RAIL SIDE MOUNTED WITH BITUMINOUS WEARING SURFACE		PROJECT NO. 05004-1
PROJECT IL ROUTE 9 OVER MONEY CREEK FAP ROUTE 693 SECTION 22 BR MCLEAN COUNTY STATION 1917+17.38 STRUCTURE NUMBER 057-0076	DATE 12/15/05	PROJ. BY TEG
COOMBE-BLOXDORF P.C. Engineers / Land Surveyors Springfield, Illinois Design Firm License No. 184-002703		6 OF 9 SHTS

FILE NAME = ...R-34BWS
 PLOT SCALE = 1/8" = 1'-0"
 USER NAME = CFC