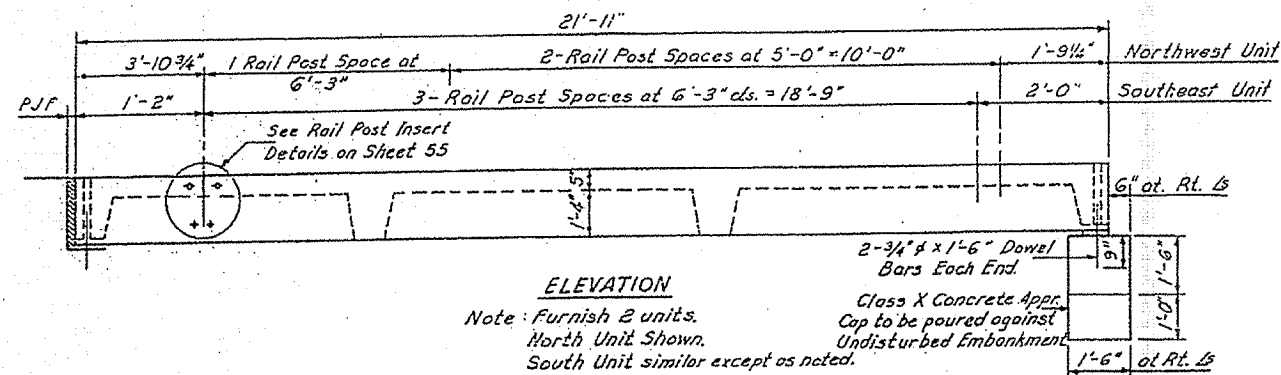


SECTIONAL ROUTE NO.	SECTION	COUNTY	TOTAL SHEETS	SHEET NO.
S.B.I. 9	*	MCLEAN	65	54
STA.	TO STA.			
FED. ROAD DIST. NO.	BLDG. NO.	FED. AID PROJECT		
* 21, 22 (P, W, R 5), 21BR, 21BR-1122				

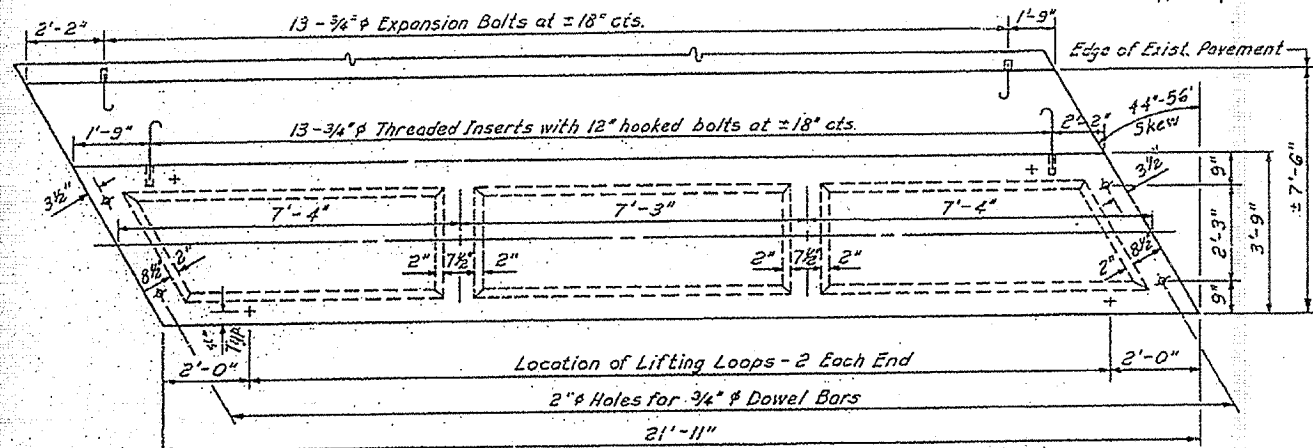


ELEVATION

Note: Furnish 2 units. North Unit Shown. South Unit similar except as noted.

2-3/4" x 1-6" Dowel Bars Each End.

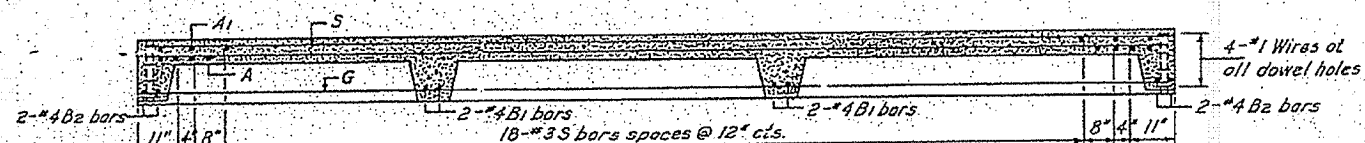
Class X Concrete Appr. Cap to be poured against Undisturbed Embankment



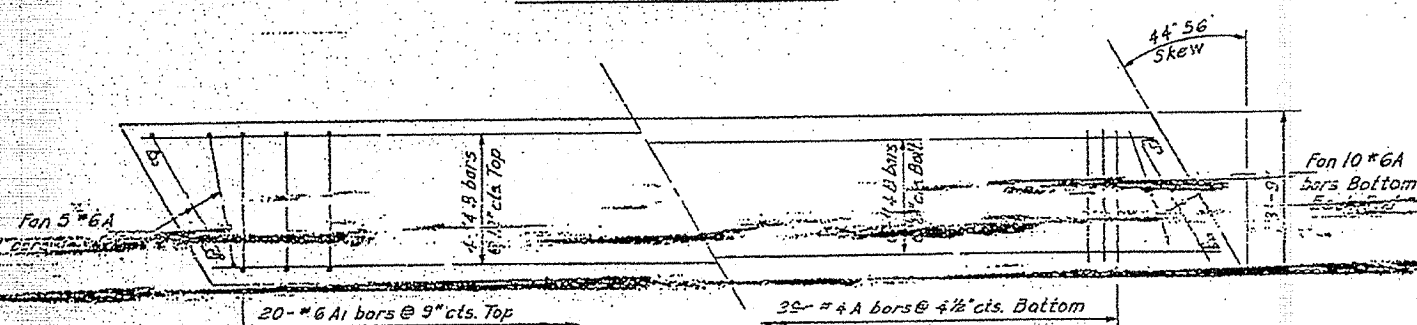
PLAN OF ONE UNIT

North Unit Shown. South Unit Similar

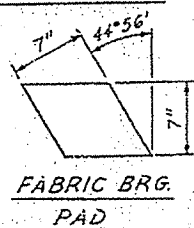
Note: For additional details, see Section A-A and Plan - Appr. Cap on Sheet 53



LONGITUDINAL SECTION



SLAB REINFORCEMENT

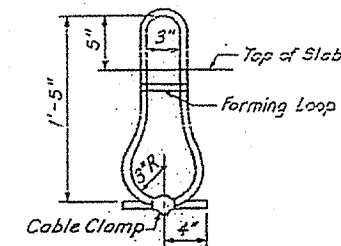


FABRIC BRG. PAD

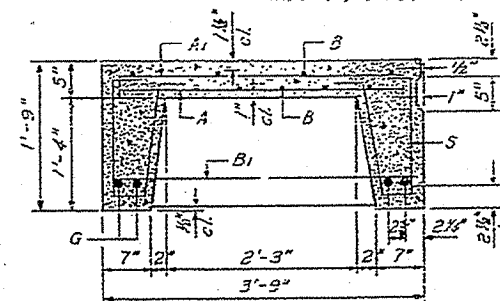
STRESSES

$f'_c = 6,500$ psi
 $f_c = 1,800$ psi
 $f_s = 20,000$ psi
 $n = 8$

LOADING HS-20

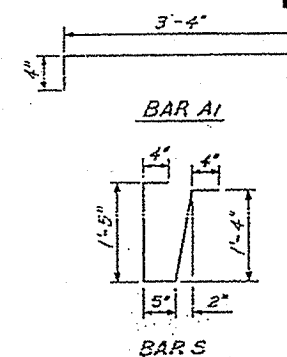


LIFTING LOOP DETAIL



SECTION THRU PRECAST UNIT

FOR INFORMATION ONLY



BAR S

BAR LIST - ONE UNIT

Reinforcement to be cast into slab.

Bar	No.	Size	Length	Shape
A	59	#4	3'-3"	—
A1	30	#4	4'-0"	—
B	10	#4	21'-7"	—
B1	4	#4	3'-6"	—
BE	4	#4	5'-0"	—
G	4	#11	21'-7"	—
S	18	#3	3'-10"	L

NOTES

Unless otherwise approved by the Engineer, lifting loops shall be 1/2" x 6 x 9 class wire rope with fiber core and shall have a minimum ultimate strength of 18,700 lbs. Loops shall be burned off after slab has been erected. Holes shall be drilled and anchor dowels grouted in place.

Cost of reinforcement and accessories cast into the slab unit, bearing pads, furnishing, drilling for, placing and grouting anchor dowels is included in Unit bid price for "Precast Concrete Bridge Slab".

The "Precast Concrete Bridge Slab" shall be erected aligned with the exterior face of the exterior Deck Beam after Deck Beams are in final position.

TWO UNITS BILL OF MATERIAL

Item	Unit	Quantity
Precast Concrete Bridge Slab	Sq. Ft.	165
Pavement Fabric	Sq. Yds.	18
Expansion Bolts 3/4"	EACH	52
Class X Concrete	Cu. Yds.	1.5

REVISIONS

Name	Date

STATE OF ILLINOIS
 DEPARTMENT OF TRANSPORTATION
PRECAST CONCRETE BRIDGE SLAB
 S.B.I. RTE. 9 OVER MONEY CREEK
 SECTION 22 BR
 MCLEAN COUNTY

Scale: As Shown
 Date: Jan. 1976
 Drawn By: [Blank]
 Checked By: [Blank]

KERRILL, BENDER, STONE & ASSOCIATES, INC.
 Consulting Engineers - Chicago, Illinois

DESIGNED	G. P. Rogut
CHECKED	J. M. Bubo
DRAWN	G. A. Sebastian
CHECKED	G. P. Rogut