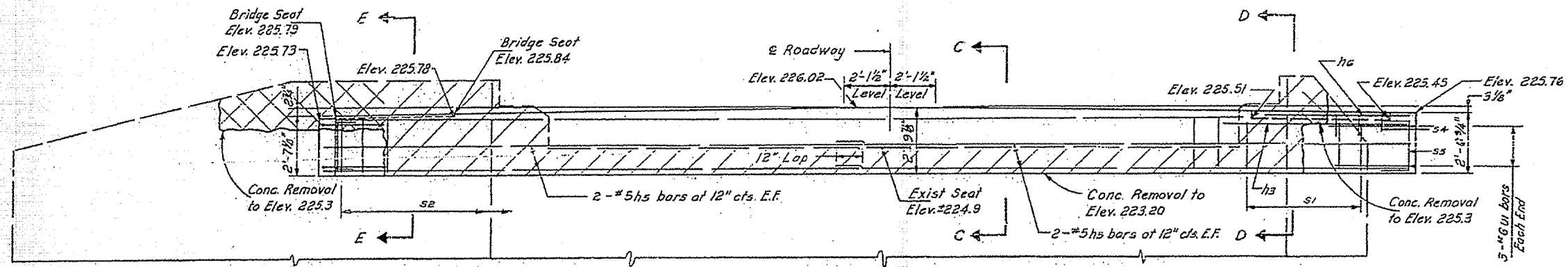
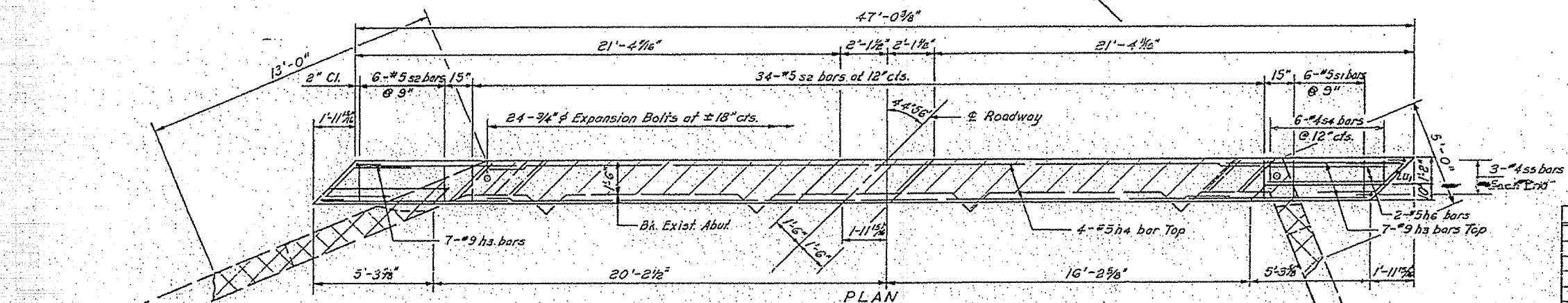


ROUTE NO.	SECTION	COUNTY	SHEETS	NO.
S.B.L. 9	#	MCLEAN	65	57
STA.	TO STA.			
FED. ROAD DIST. NO.	BRIDGE	FED. AID PROJECT		

* 21, 22 (A, W & RS), 61BR, 21BR-1 & 22BR



ELEVATION
(Developed)

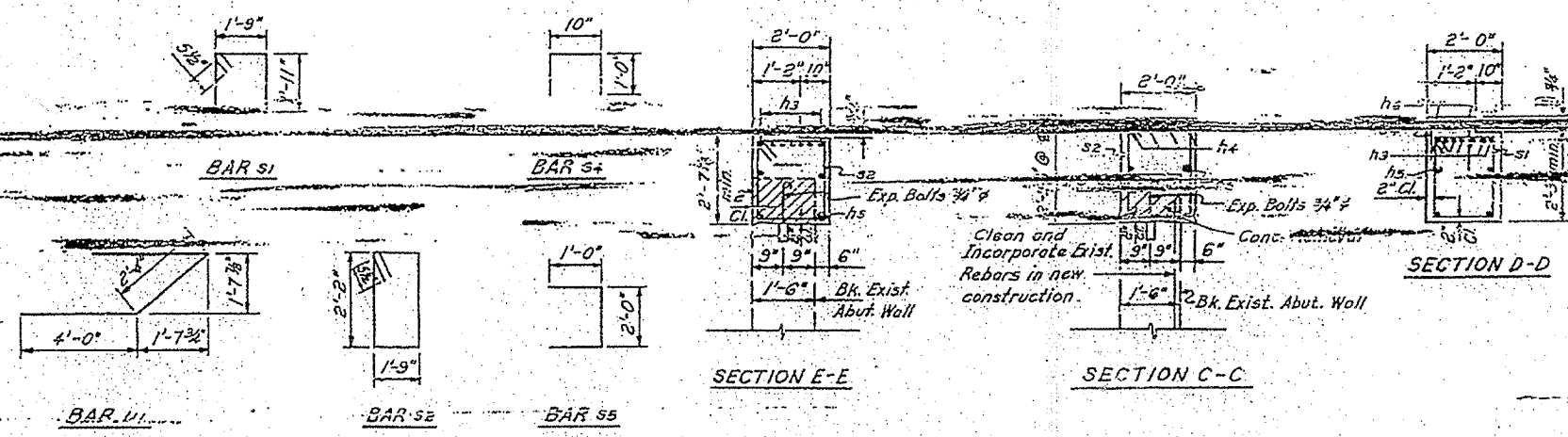


PLAN

FOR INFORMATION ONLY

BILL OF MATERIAL

Bar	No.	Size	Length	Shape
h2	14	#9	8'-6"	
h4	4	#5	32'-0"	
hs	8	#5	23'-10"	
h6	2	#5	6'-3"	
s1	6	#5	8'-3"	□
s2	40	#5	8'-9"	□
s4	6	#4	2'-10"	□
s5	6	#4	4'-0"	□
u1	6	#6	15'-2"	□



DESIGNED G. P. Kogut
CHECKED J. M. Buba
DRAWN G. A. Sebastian
CHECKED G. P. Kogut

REVISIONS	
Name	Date

STATE OF ILLINOIS
DEPARTMENT OF TRANSPORTATION
WEST ABUTMENT
S.B.L. RTE. 9 OVER MONEY CREEK
SECTION 22 BR
MCLEAN COUNTY
Scale: As Shown
Date: Jan. 1976
Checked By: [Signature]
KNICKLE, SUMNER, STONE & ASSOCIATES, INC.