

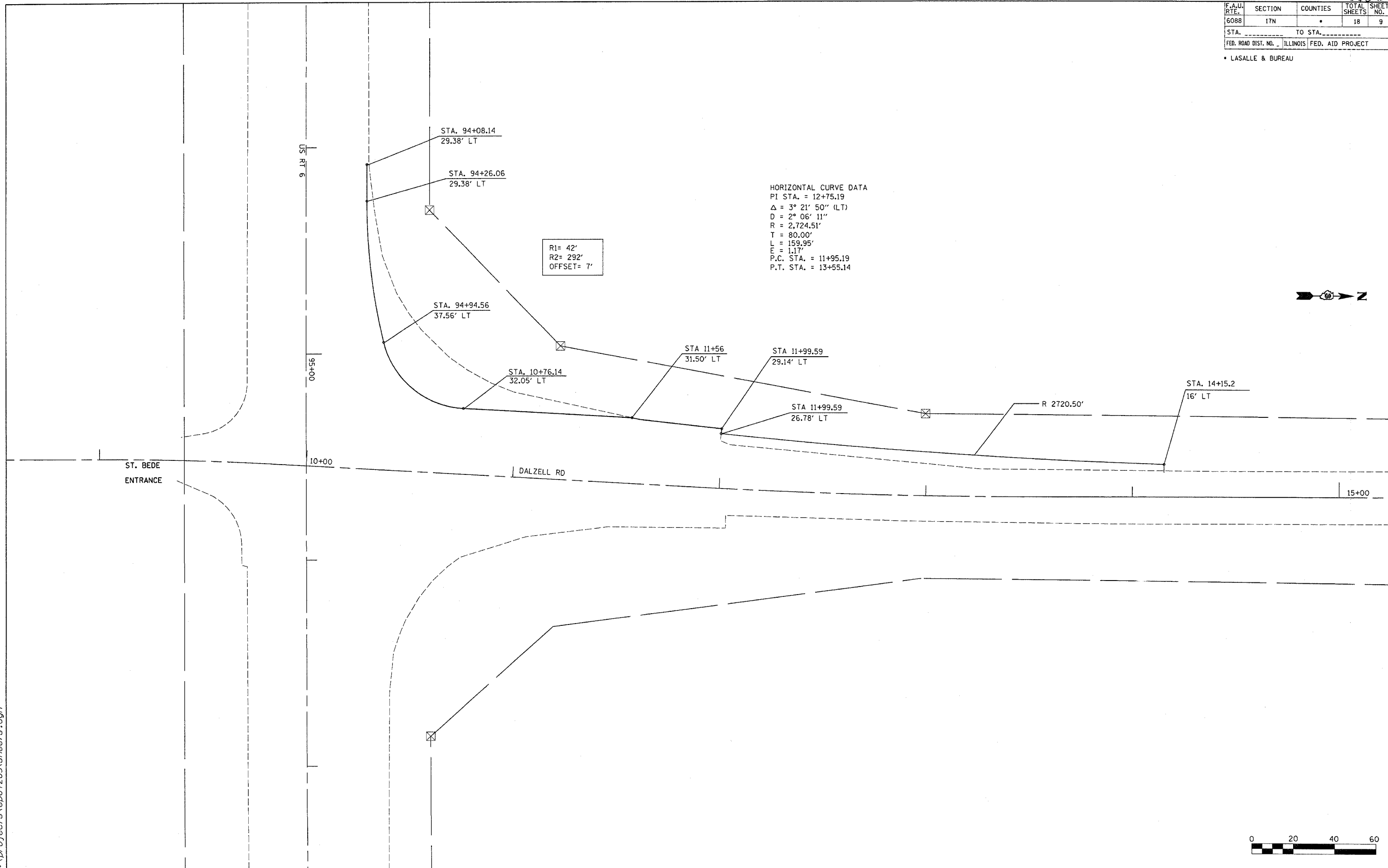
66595

F.A.U. RTE.	SECTION	COUNTIES	TOTAL SHEETS	SHEET NO.
6088	17N		18	9
STA. _____ TO STA. _____				
FED. ROAD DIST. NO. _____		ILLINOIS FED. AID PROJECT		

• LASALLE & BUREAU

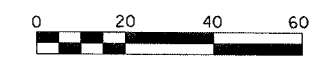
HORIZONTAL CURVE DATA
 PI STA. = 12+75.19
 Δ = 3° 21' 50" (LT)
 D = 2° 06' 11"
 R = 2,724.51'
 T = 80.00'
 L = 159.95'
 E = 1.17'
 P.C. STA. = 11+95.19
 P.T. STA. = 13+55.14

R1= 42'
 R2= 292'
 OFFSET= 7'



ST. BEDE
ENTRANCE

DALZELL RD



GEOMETRICS SHEET

c:\projects\ep01205\sheets.dgn