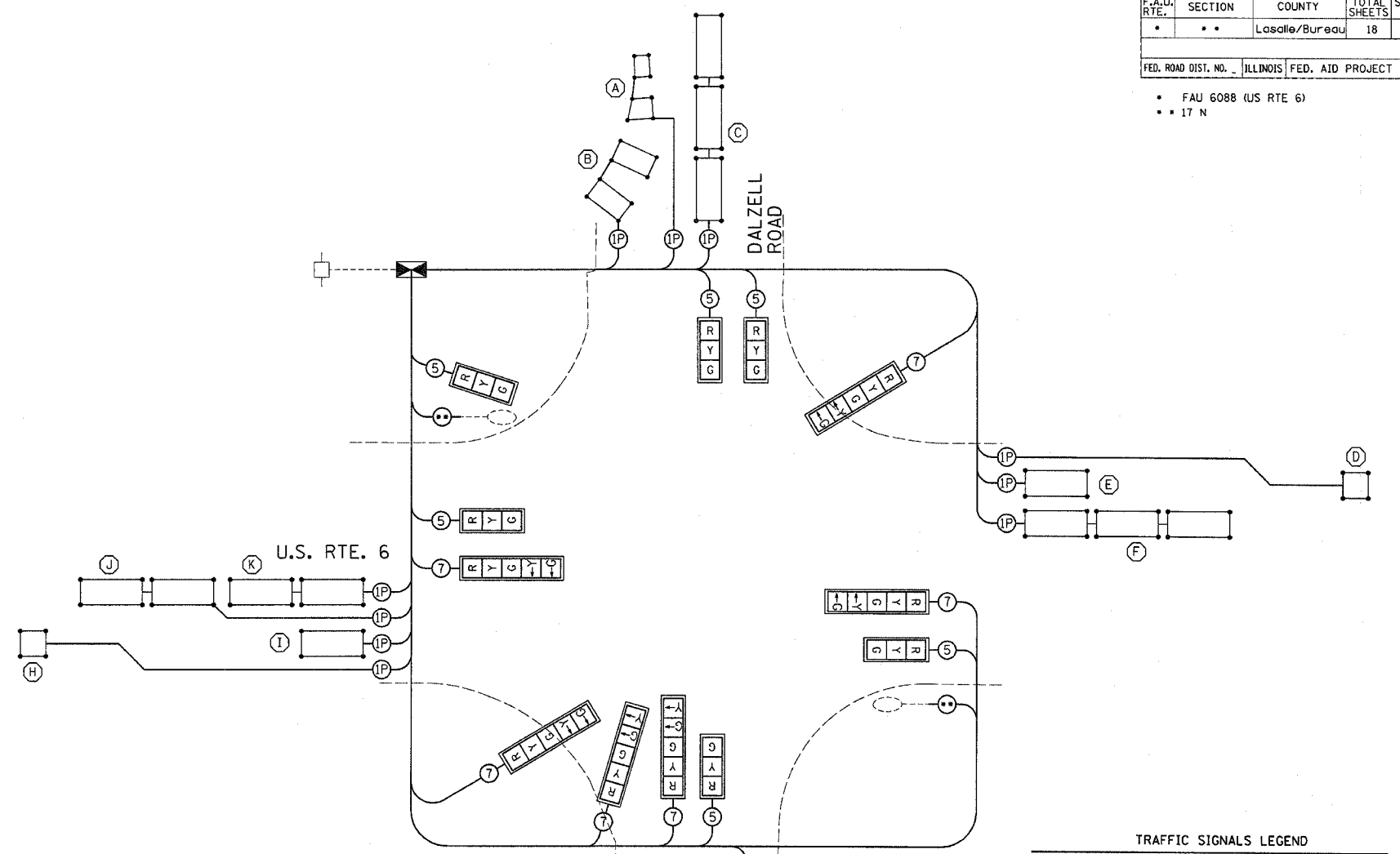
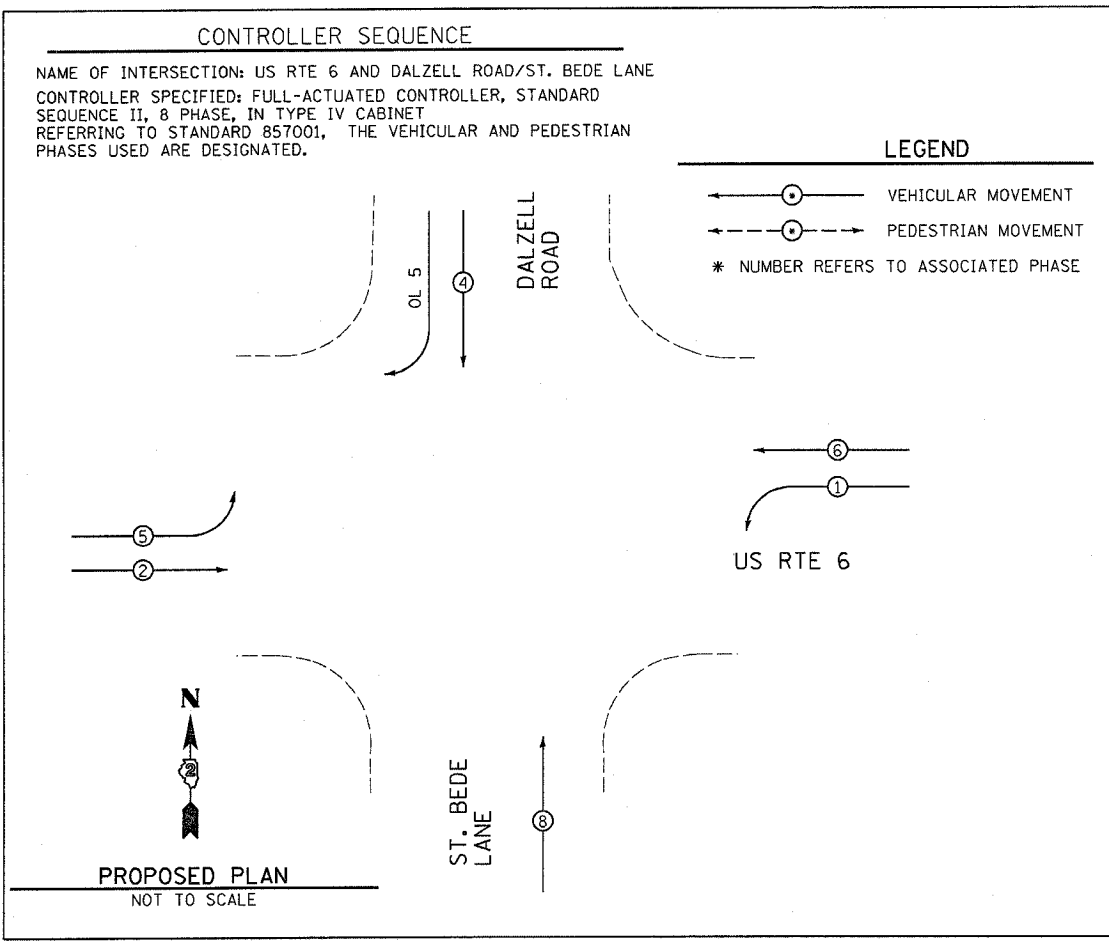


F.A.U. RTE.	SECTION	COUNTY	TOTAL SHEETS	SHEET NO.
		Lasalle/Bureau	18	15

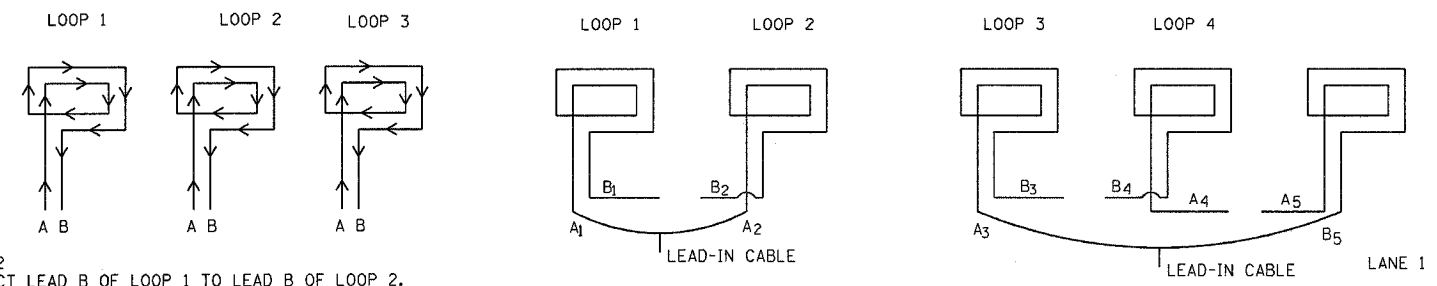
FED. ROAD DIST. NO.	ILLINOIS	FED. AID PROJECT

- FAU 6088 (US RTE 6)
- 17 N



- #### TRAFFIC SIGNALS LEGEND
- DETNOTES NUMBER OF CONDUCTORS (NEW) ALL CABLE NO. 14 EXCEPT AS INDICATED
 - ⊕ DETNOTES NUMBER OF PAIR OF WIRE (NEW) ALL LOOP DETECTOR CABLE TO BE TWISTED, SHIELDED ALL CABLE NO. 14 EXCEPT AS INDICATED
 - EXISTING LUMINAIRE
 - ⊕ DETNOTES 3-1 CONDUCTORS, NO. 10 CABLE, 600V (XLP-TYPE USE)
 - DENOTES DETECTOR LOOP SYSTEM
 - ⊕ PROPOSED CONTROLLER CABINET
 - ⊕ LEFT TURN YELLOW
 - ⊕ LEFT TURN GREEN
 - ⊕ SIGNAL SECTION 12"
 - ⊕ VEHICLE DETECTOR, INDUCTION LOOP
 - ⊕ TRAFFIC SIGNAL BACKPLATE

STEP 1
 WIND ALL LOOPS CLOCKWISE. LABEL BEGINNING END OF CABLE A. LABEL ENDING END OF CABLE B. FOLLOW DETECTOR LOOP CABLE MANUFACTURER'S INSTRUCTIONS ON NUMBER OF TURNS FOR LOOP.



STEP 2
 CONNECT LEAD B OF LOOP 1 TO LEAD B OF LOOP 2.
 CONNECT LEAD A OF LOOP 2 TO LEAD A OF LOOP 3.

DETECTOR LOOP WINDING AND SERIES SPLICING DETAIL
 (SEE DETECTOR LOOP INDUCTANCE CHART FOR NUMBER OF TURNS)

REVISIONS	
NAME	DATE

ILLINOIS DEPARTMENT OF TRANSPORTATION
CABLE PLAN
 FAU 6088 (US RTE 6) AND
 DALZELL ROAD
 SECTION 17 N
 LASALLE & BUREAU COUNTY

SCALE: VERT. 1"=20'
 HORIZ. 1"=20'
 DATE 9/05

DRAWN BY ARR
 CHECKED BY MVF

12/13/2005
 c:\projects\ep01205\consu\l\cable.dgn