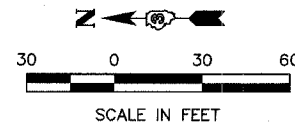


FAP RTE	SECTION	COUNTY	TOTAL SHEETS	SHEET NO.
68	101BR	LIVINGSTON	47	10
STA. 276+75		TO STA. 287+25		
FED. ROAD DIST. NO.		ILLINOIS FED. AID PROJECT		



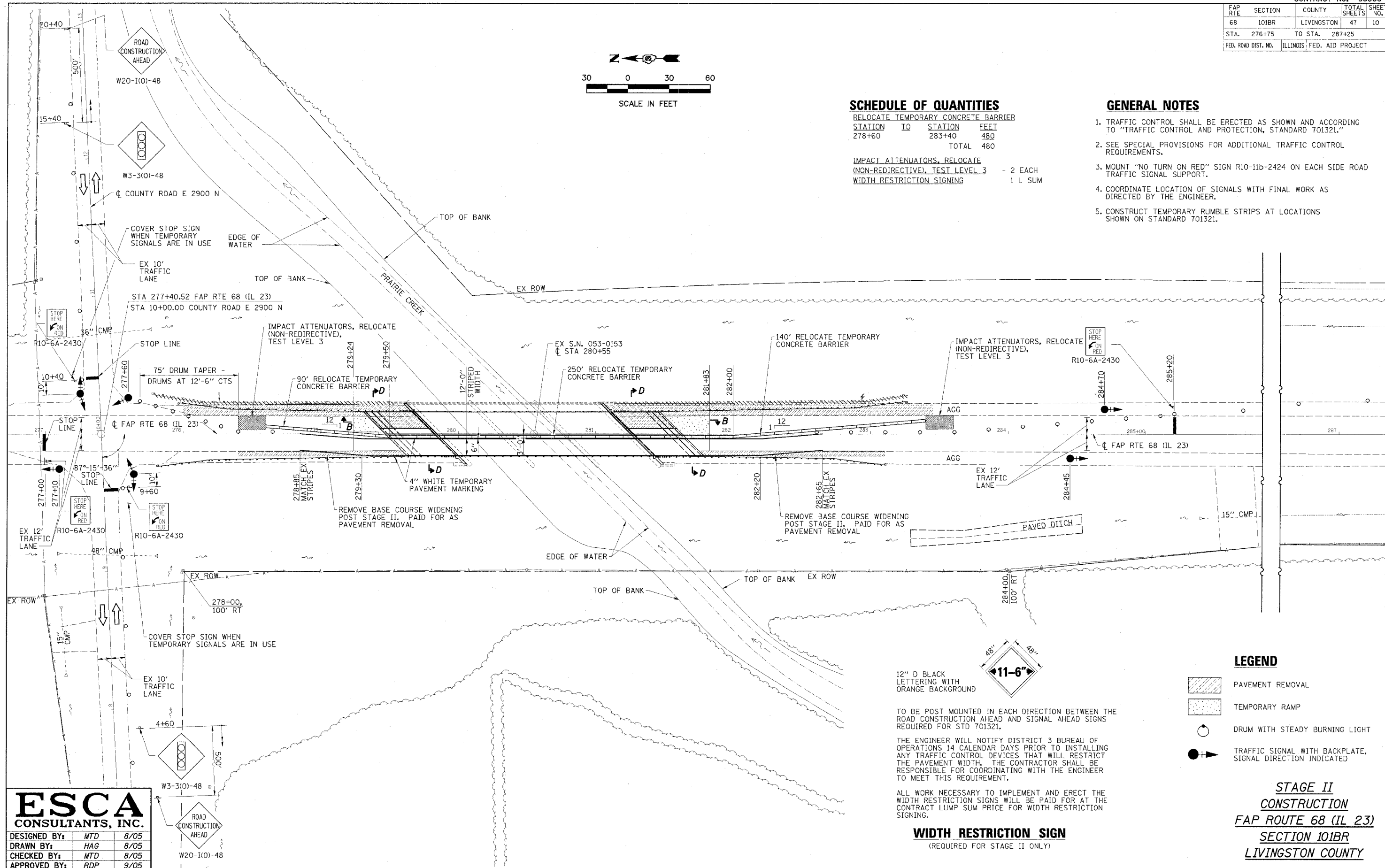
SCHEDULE OF QUANTITIES

RELOCATE TEMPORARY CONCRETE BARRIER	STATION TO	STATION	FEET
	278+60	283+40	480
			TOTAL 480

IMPACT ATTENUATORS, RELOCATE (NON-REDIRECTIVE), TEST LEVEL 3	QUANTITY
	- 2 EACH
WIDTH RESTRICTION SIGNING	QUANTITY
	- 1 L SUM

GENERAL NOTES

1. TRAFFIC CONTROL SHALL BE ERECTED AS SHOWN AND ACCORDING TO "TRAFFIC CONTROL AND PROTECTION, STANDARD 701321."
2. SEE SPECIAL PROVISIONS FOR ADDITIONAL TRAFFIC CONTROL REQUIREMENTS.
3. MOUNT "NO TURN ON RED" SIGN R10-11b-2424 ON EACH SIDE ROAD TRAFFIC SIGNAL SUPPORT.
4. COORDINATE LOCATION OF SIGNALS WITH FINAL WORK AS DIRECTED BY THE ENGINEER.
5. CONSTRUCT TEMPORARY RUMBLE STRIPS AT LOCATIONS SHOWN ON STANDARD 701321.



12" D BLACK LETTERING WITH ORANGE BACKGROUND

TO BE POST MOUNTED IN EACH DIRECTION BETWEEN THE ROAD CONSTRUCTION AHEAD AND SIGNAL AHEAD SIGNS REQUIRED FOR STD 701321.

THE ENGINEER WILL NOTIFY DISTRICT 3 BUREAU OF OPERATIONS 14 CALENDAR DAYS PRIOR TO INSTALLING ANY TRAFFIC CONTROL DEVICES THAT WILL RESTRICT THE PAVEMENT WIDTH. THE CONTRACTOR SHALL BE RESPONSIBLE FOR COORDINATING WITH THE ENGINEER TO MEET THIS REQUIREMENT.

ALL WORK NECESSARY TO IMPLEMENT AND ERECT THE WIDTH RESTRICTION SIGNS WILL BE PAID FOR AT THE CONTRACT LUMP SUM PRICE FOR WIDTH RESTRICTION SIGNING.

WIDTH RESTRICTION SIGN
(REQUIRED FOR STAGE II ONLY)

LEGEND

- PAVEMENT REMOVAL
- TEMPORARY RAMP
- DRUM WITH STEADY BURNING LIGHT
- TRAFFIC SIGNAL WITH BACKPLATE, SIGNAL DIRECTION INDICATED

STAGE II CONSTRUCTION
FAP ROUTE 68 (IL 23)
SECTION 101BR
LIVINGSTON COUNTY

ESCA
CONSULTANTS, INC.

DESIGNED BY:	MTD	8/05
DRAWN BY:	HAG	8/05
CHECKED BY:	MTD	8/05
APPROVED BY:	RDP	9/05