

BENCHMARK: Chiseled "Square" on top of Northwest Wingwall, SN 053-0153
Elev. 622.08

EXISTING STRUCTURE: SN 053-0153 was originally built in 1982. The superstructure consists of 3 simple spans of 21" PPC deck beams on pile bent abutments and piers. The back-to-back abutments dimension measures 145'-4 1/4" while the out-to-out width measures 46'-0". The existing superstructure shall be removed and replaced utilizing stage construction.

No salvage

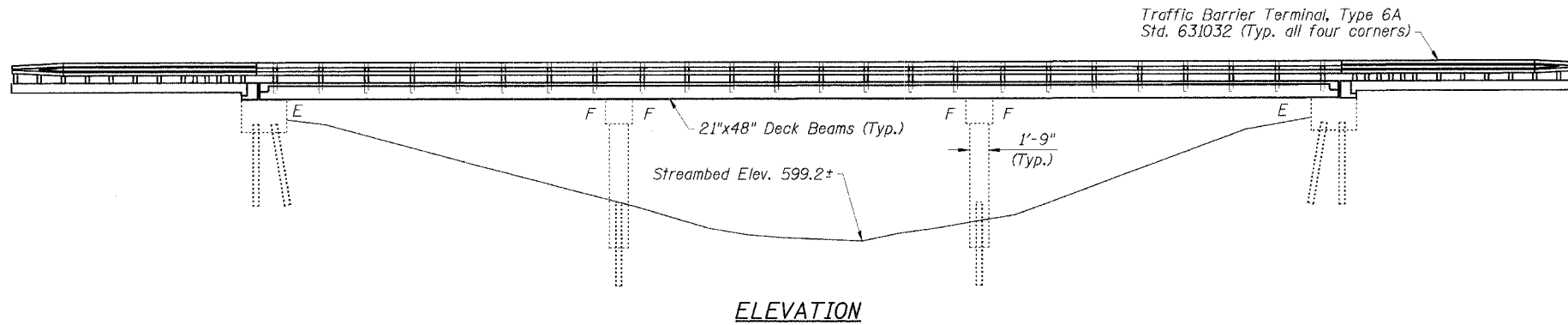
STATE OF ILLINOIS
DEPARTMENT OF TRANSPORTATION

ROUTE NO.	SECTION	COUNTY	TOTAL SHEETS	SHEET NO.
FAP 68	101BR	LIVINGSTON	47	15
STA.	TO STA.			
FED. ROAD DIST. NO.	ILLINOIS	FED. AID PROJECT		
DWG. NO. 1 OF 17				

CONTRACT NO. 66606

STRUCTURE INDEX OF SHEETS

General Plan	Dwg. No. 1 of 17
General Data	Dwg. No. 2 of 17
Stage Construction Details	Dwg. No. 3 of 17
Temporary Concrete Barrier	Dwg. No. 4 of 17
Superstructure	Dwg. No. 5 of 17
Superstructure Details	Dwg. No. 6-7 of 17
Type SM Steel Bridge Rail	Dwg. No. 8 of 17
Continuous Seal Type	
Neoprene Expansion Joints	Dwg. No. 9 of 17
Anchor Bolt Details	Dwg. No. 10 of 17
North Abutment	Dwg. No. 11 of 17
South Abutment	Dwg. No. 12 of 17
Abutment Details	Dwg. No. 13 of 17
Pier 1	Dwg. No. 14 of 17
Pier 2	Dwg. No. 15 of 17
Pier Details	Dwg. No. 16 of 17
Bar Splicer Assembly Details	Dwg. No. 17 of 17



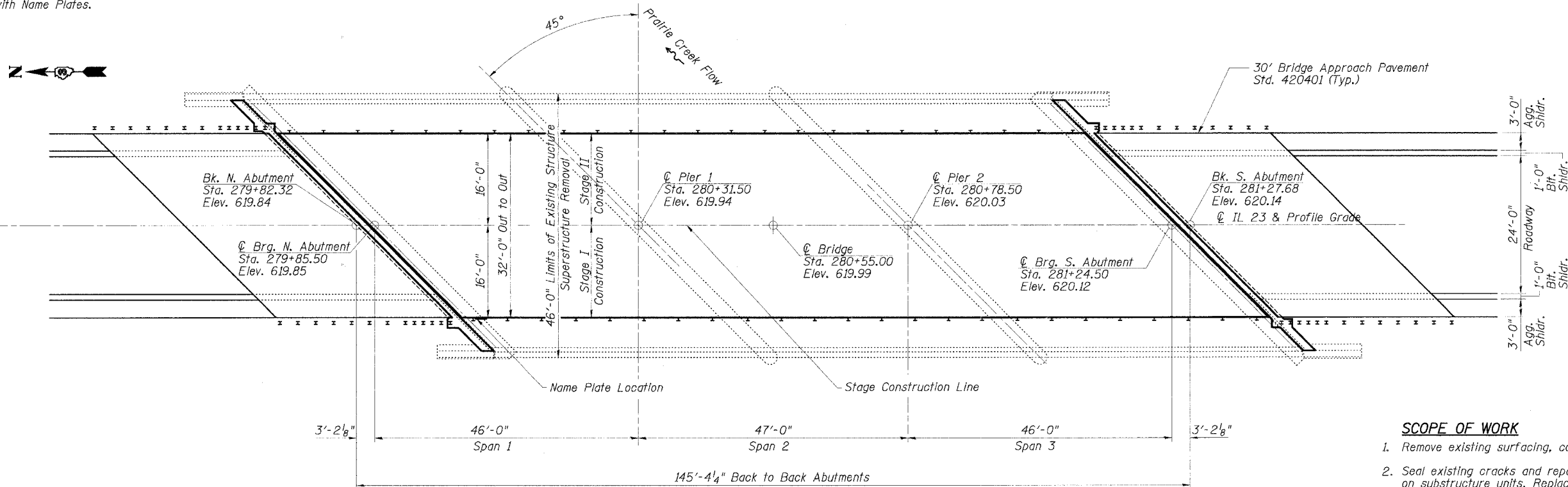
STATION 280+55
BUILT 200_ BY
STATE OF ILLINOIS
F.A.P. RT. 68 SEC. 101BR
LOADING HS20
STR. NO. 053-0153

NAME PLATE

See Std. 515001

Note:
Existing Name Plate shall be cleaned and relocated adjacent to the new plate. Cost included with Name Plates.

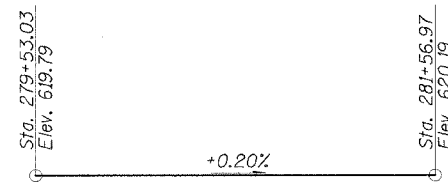
ELEVATION



PLAN

SCOPE OF WORK

1. Remove existing surfacing, concrete parapets, and deck beams.
2. Seal existing cracks and repair delaminated/spalled concrete areas on substructure units. Replace existing abutment backwalls.
3. Repair beam bearing seats at abutments and piers as required.
4. Reconstruct a three-span PPCD beam superstructure with concrete wearing surface and Steel Bridge Rail Type SM, and new bridge approach pavements.



PROFILE GRADE
(Along C Roadway)

DESIGN SPECIFICATION

2002 AASHTO

LOADING HS20-44

Allow 50 psf future wearing surface

DESIGN STRESSES

FIELD UNITS

f'c = 5,000 psi (Concrete Wearing Surface)
f'c = 3,500 psi (All concrete except CWS)
fy = 60,000 psi (reinf.)

PRECAST PRESTRESSED UNITS

f'c = 5,000 psi
f'cl = 4,000 psi
f's = 270,000 psi (1/2" low lax strands)
f'sl = 201,960 psi (1/2" low lax strands)

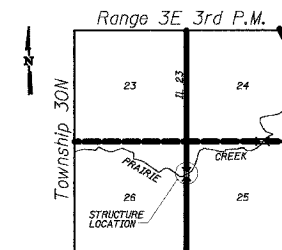
SEISMIC DATA

Seismic Performance Category (SPC) = A
Bedrock Acceleration Coefficient (A) = 0.045g
Site Coefficient (S) = 1.2



EXPIRES 11-30-06

SIGNATURE
12/21/05
DATE



LOCATION SKETCH

GENERAL PLAN
IL 23 OVER PRAIRIE CREEK
FAP ROUTE 68 - SECTION 101BR
LIVINGSTON COUNTY
STATION 280+55.00
STRUCTURE NO. 053-0153

ESCA
CONSULTANTS, INC.

DESIGNED BY:	ELH	8/05
DRAWN BY:	DWH	8/05
CHECKED BY:	ELH	12/05
APPROVED BY:	RDP	12/05