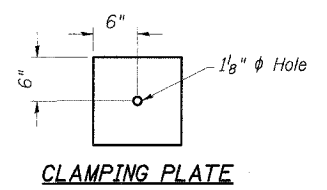
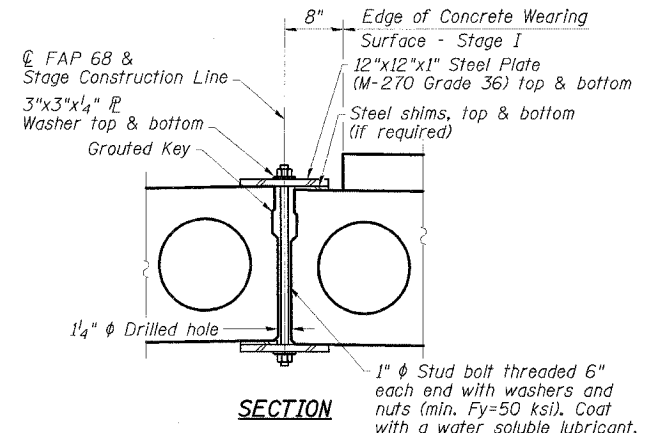
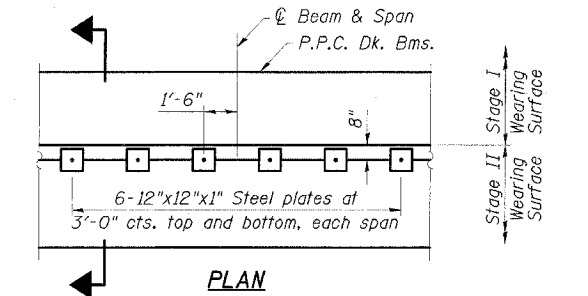
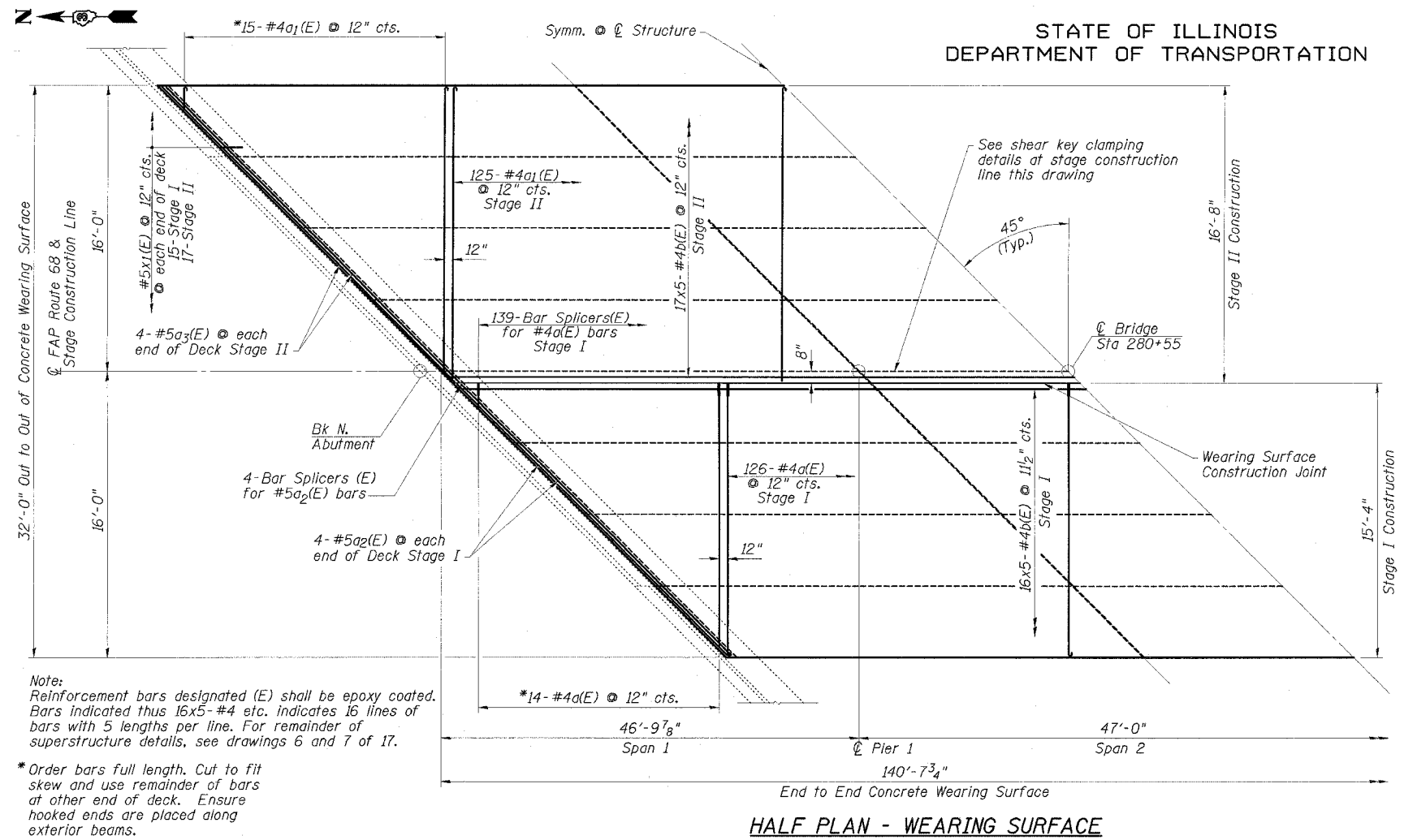


STATE OF ILLINOIS  
DEPARTMENT OF TRANSPORTATION

ROUTE NO.	SECTION	COUNTY	TOTAL SHEETS	SHEET NO.
FAP 68	101BR	LIVINGSTON	47	19
STA	TO STA			
FED. ROAD DIST. NO.	ILLINOIS	FED. AID PROJECT		
DWG. NO. 5 OF 17				
CONTRACT NO. 66606				



Notes:  
See Special Provisions for Stage Construction  
Precast Prestressed Concrete Deck Beams.  
See Stage Construction Details for traffic lanes.  
Cost is included with Precast Prestressed Concrete Deck Beams.

SHEAR KEY CLAMPING DETAILS

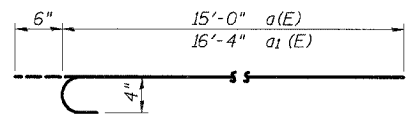
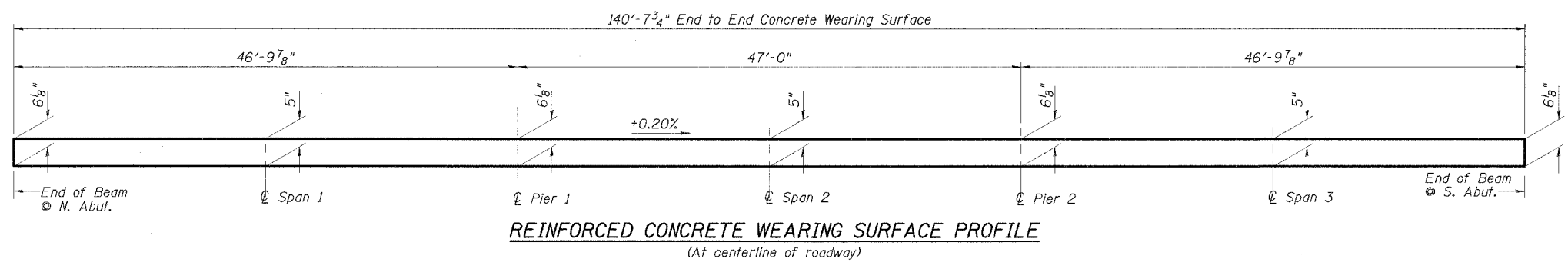
CONCRETE WEARING SURFACE  
BILL OF MATERIAL

Bar	No.	Size	Length	Shape	
a(E)	140	#4	15'-6"	C	
a <sub>1</sub> (E)	140	#4	16'-10"	C	
a <sub>2</sub> (E)	8	#5	21'-4"	—	
a <sub>3</sub> (E)	8	#5	23'-2"	—	
b(E)	165	#4	29'-5"	—	
x <sub>1</sub> (E)	64	#5	3'-0"	L	
Reinforcement Bars, Epoxy Coated				Pound	6840
Concrete Wearing Surface, 5"				Sq. Yd.	500
Bridge Deck Grooving				Sq. Yd.	469
Bar Splicers				Each	147
Protective Coat				Sq. Yd.	500

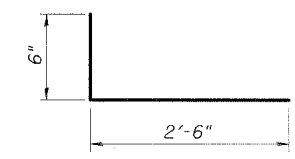
Note:  
Reinforcement bars designated (E) shall be epoxy coated.  
Bars indicated thus 16x5-#4 etc. indicates 16 lines of bars with 5 lengths per line. For remainder of superstructure details, see drawings 6 and 7 of 17.

\* Order bars full length. Cut to fit skew and use remainder of bars at other end of deck. Ensure hooked ends are placed along exterior beams.

MIN. BAR LAP  
#4 bar = 1'-8"



BARS a(E) & a<sub>1</sub>(E)



BAR x<sub>1</sub>(E)

SUPERSTRUCTURE  
IL 23 OVER PRAIRIE CREEK  
FAP ROUTE 68 - SECTION 101BR  
LIVINGSTON COUNTY  
STATION 280+55.00  
STRUCTURE NO. 053-0153

**ESCA**  
CONSULTANTS, INC.

DESIGNED BY:	ELH	8/05
DRAWN BY:	DWH	8/05
CHECKED BY:	ELH	12/05
APPROVED BY:	RDP	12/05

Note:  
Greater thickness is required at edges of superstructure to conform to cross slopes shown on Dwg. 6 of 17.