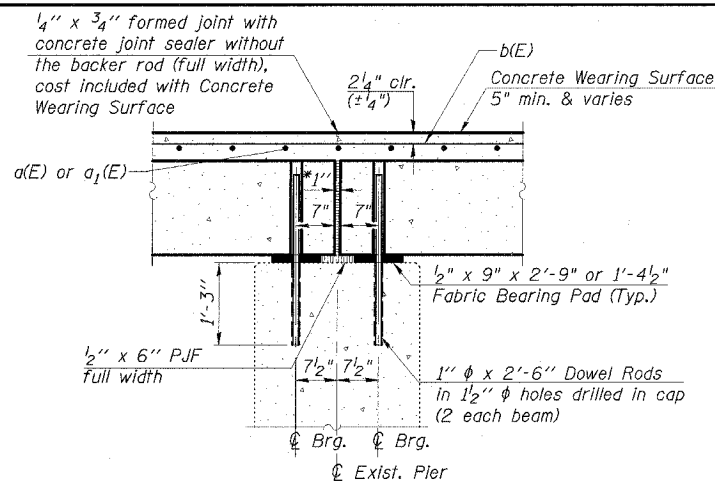


ROUTE NO.	SECTION	COUNTY	TOTAL SHEETS	SHEET NO.
FAP 68	101BR	LIVINGSTON	47	21
STA.	TO STA.			
FED. ROAD DIST. NO.	ILLINOIS	FED. AID PROJECT-		
DWG. NO. 7 OF 17				

CONTRACT NO. 66606

STATE OF ILLINOIS
DEPARTMENT OF TRANSPORTATION

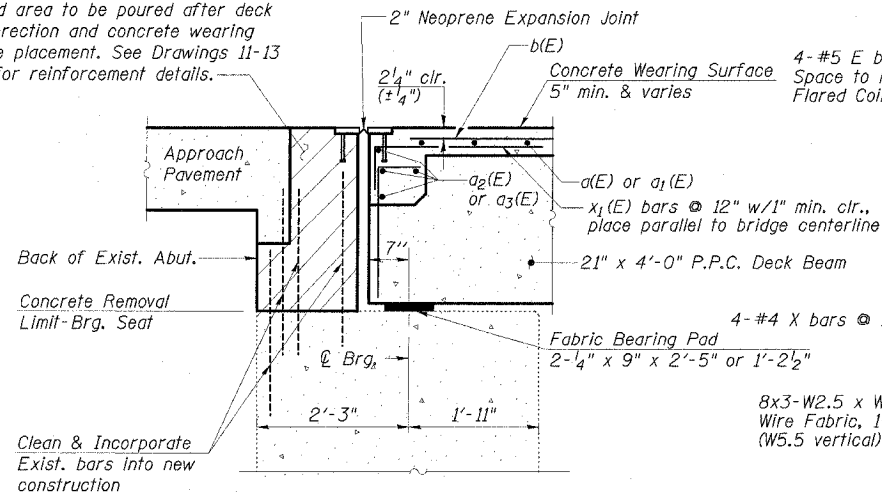


SECTION THRU PIER

(Horizontal dimensions are at right angles to beam ends)

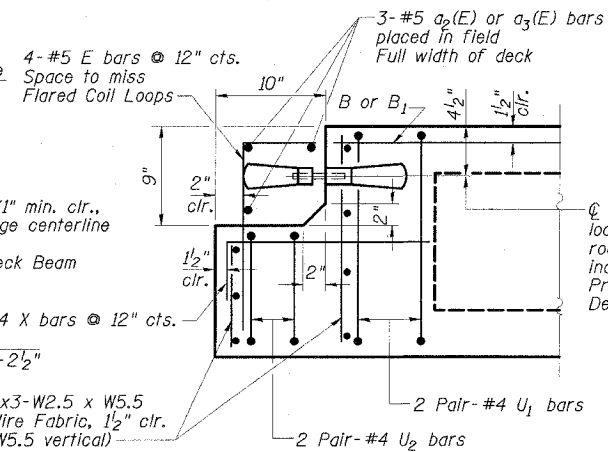
*1" Jt. shall be filled with non-shrink grout. 1" dimension may vary to accommodate tolerance in beam lengths.

Hatched area to be poured after deck beam erection and concrete wearing surface placement. See Drawings 11-13 of 17 for reinforcement details.



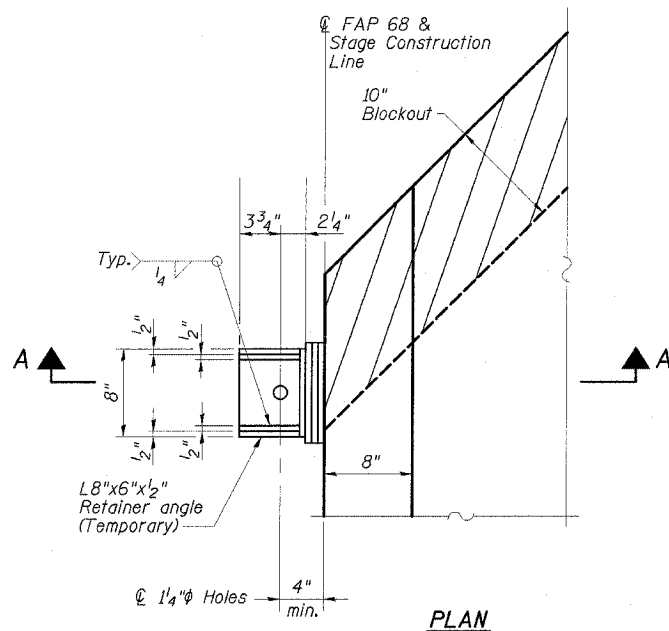
SECTION THRU ABUTMENT

(Dimensions at right angles)

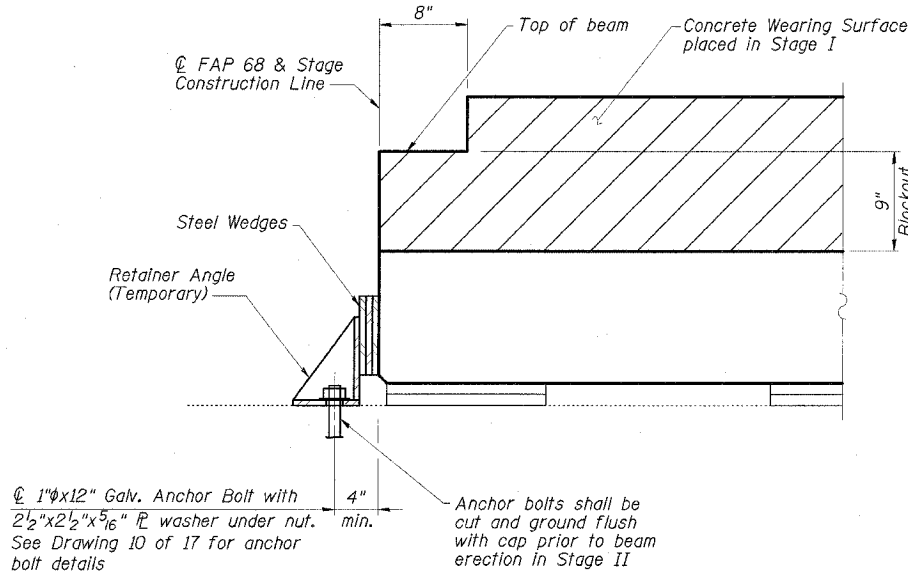


END OF BEAM (EXPANSION END)

(Dimensions at right angles)



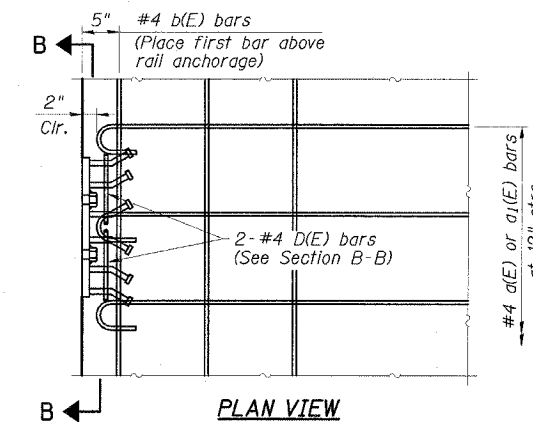
PLAN



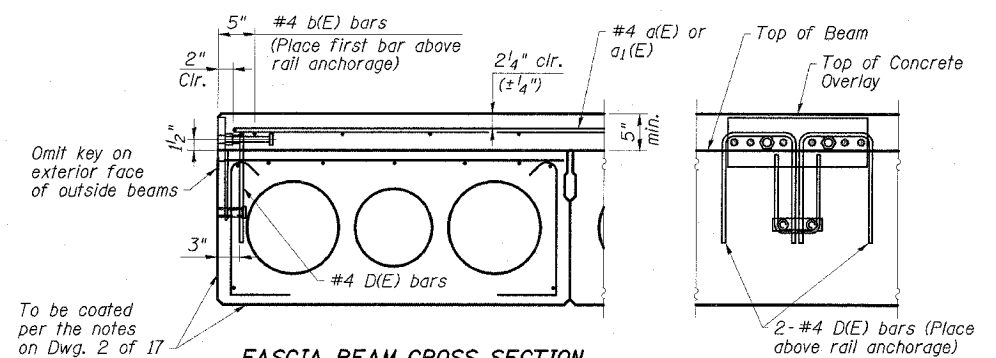
SECTION A-A

BEAM RETAINER DETAILS AT STAGE CONSTRUCTION LINE

(2 Required)
Cost of Retainer Angles, Anchor Bolts & accessories are included with Precast Prestressed Concrete Deck Beams. See Dwg. 13 of 17 for exterior beam retainer details.



PLAN VIEW



FASCIA BEAM CROSS SECTION

See Section Thru Interior Beams on Dwg. 6 of 17 for strand pattern, dimensions and bar call outs.

SECTION B-B

CONCRETE OVERLAY MODIFICATIONS FOR RAIL ANCHORAGE

NOTES

After beams have been erected, holes shall be drilled into substructure and dowels rods placed. Dowel holes shall be filled with non-shrink grout to top of beam and allowed to cure min. 24 hrs. prior to grouting the shear keys.

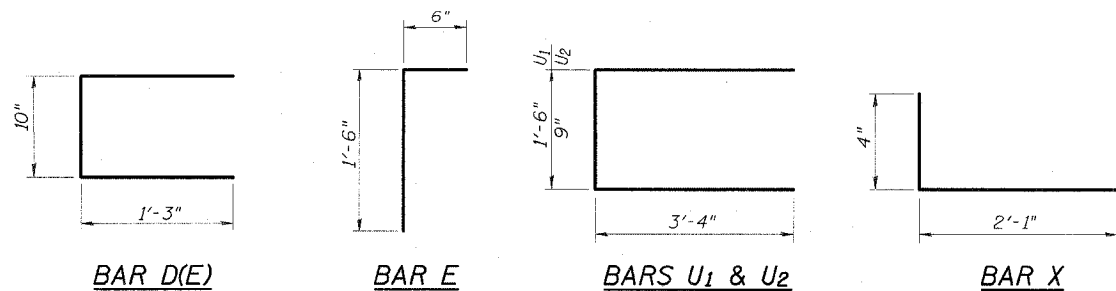
Concrete wearing surface to be poured after grouting the shear keys.

Dowel rods drilled in cap are included in the cost of Precast Prestressed Concrete Deck Beams (21" depth).

The rail anchorage shall be cast with the beam and the wearing surface shall be cast in the field. Formwork necessary for the wearing surface may be secured utilizing the bottom rail anchorage inserts and/or additional inserts cast into the beam. Drilling into the beam will not be permitted.

ESCA
CONSULTANTS, INC.

DESIGNED BY:	ELH	8/05
DRAWN BY:	DWH	8/05
CHECKED BY:	ELH	12/05
APPROVED BY:	RDP	12/05



BAR D(E)

BAR E

BARS U1 & U2

BAR X

**SUPERSTRUCTURE DETAILS
IL 23 OVER PRAIRIE CREEK
FAP ROUTE 68 - SECTION 101BR
LIVINGSTON COUNTY
STATION 280+55.00
STRUCTURE NO. 053-0153**