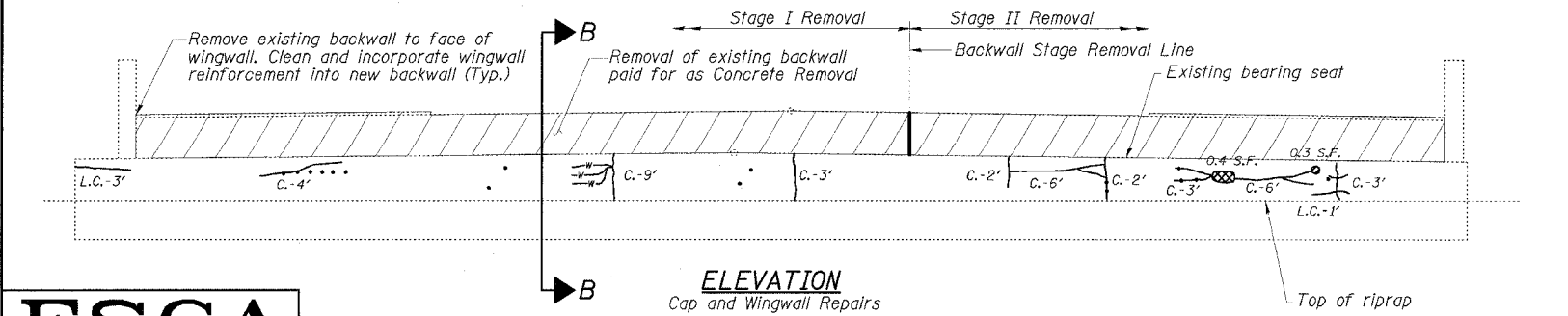
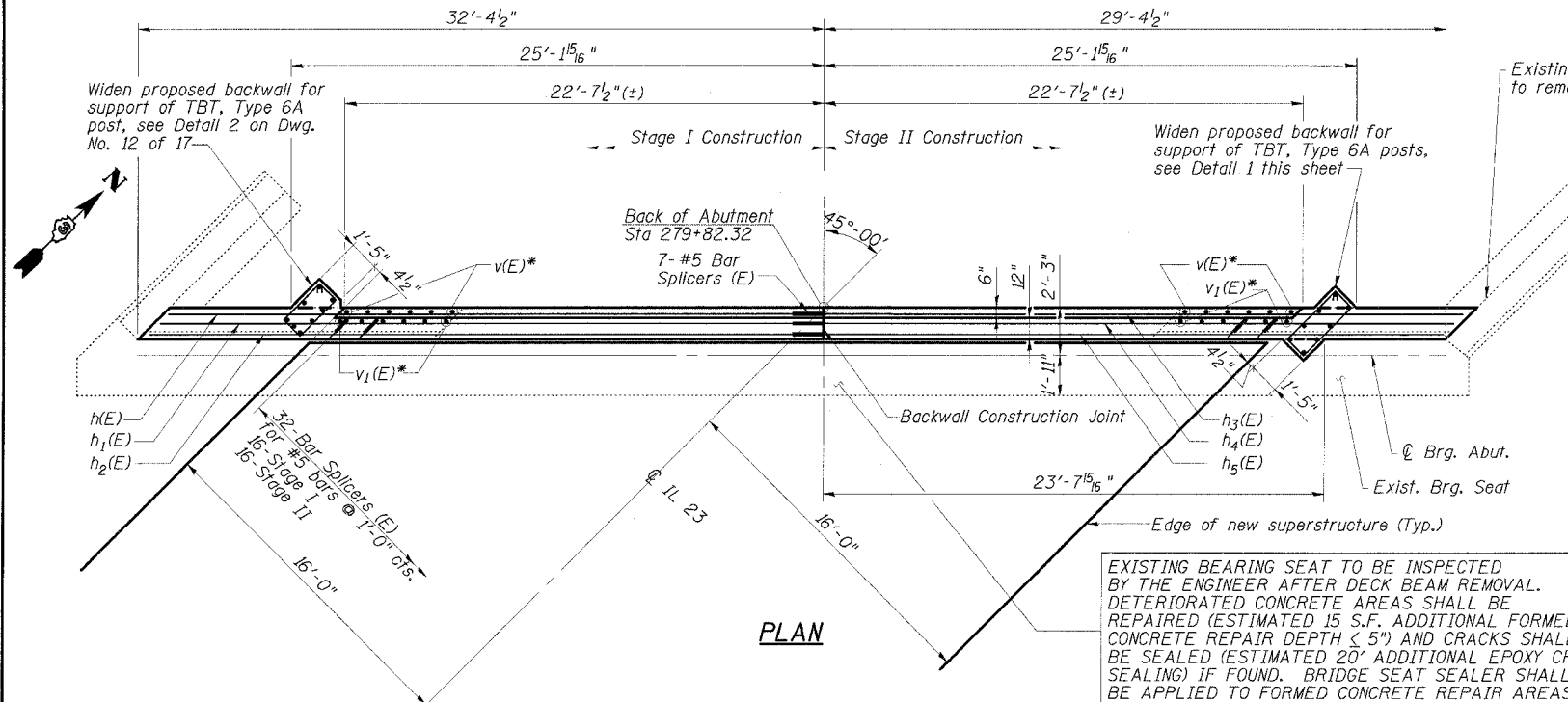
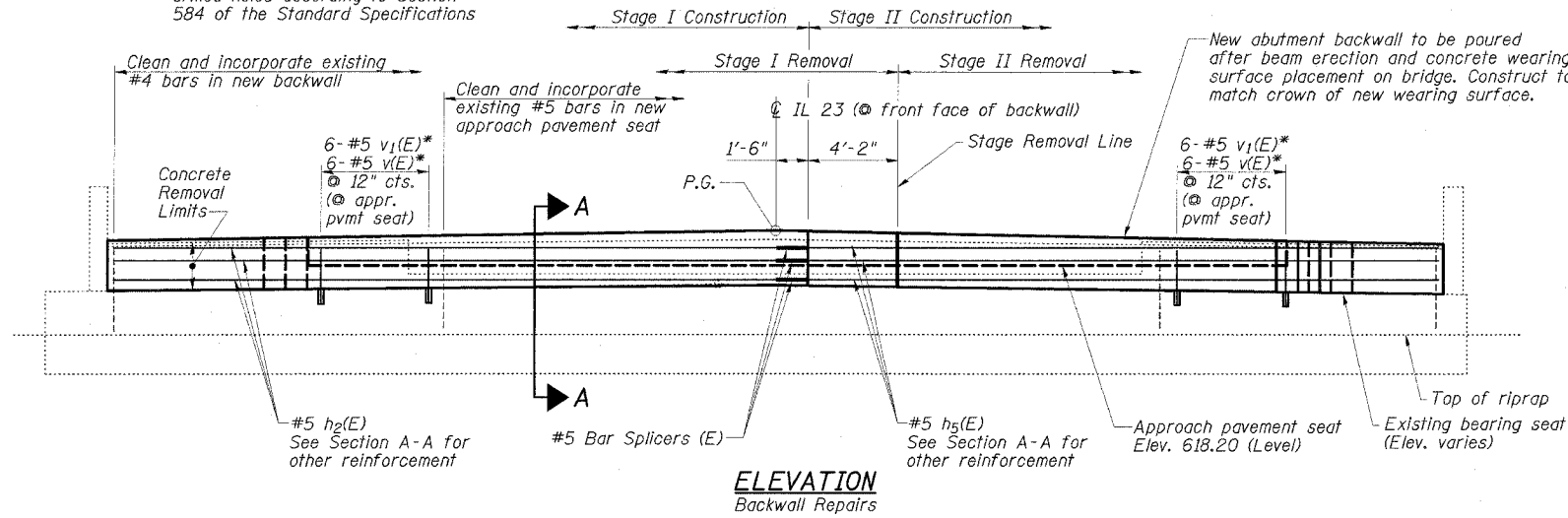


STATE OF ILLINOIS
DEPARTMENT OF TRANSPORTATION

ROUTE NO.	SECTION	COUNTY	TOTAL SHEETS	SHEET NO.
FAP 68	101BR	LIVINGSTON	47	25
STA	TO STA			
FED. ROAD DIST. NO.	ILLINOIS	FED. AID PROJECT		
DWG. NO. 11 OF 17				

CONTRACT NO. 66606

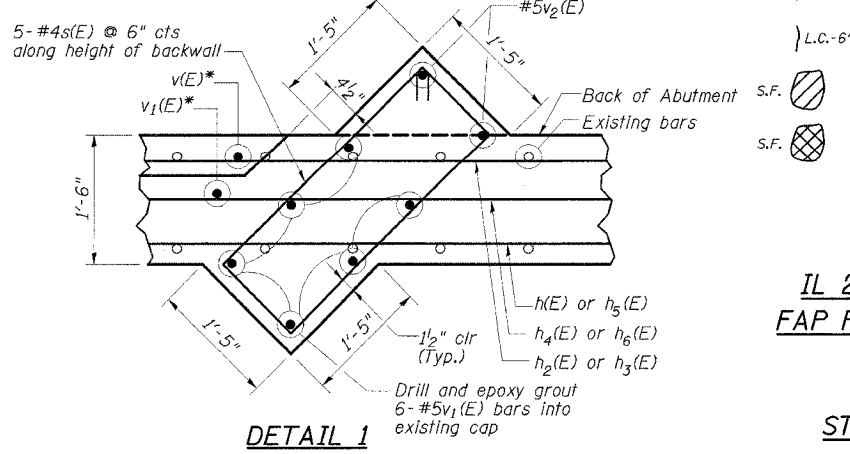
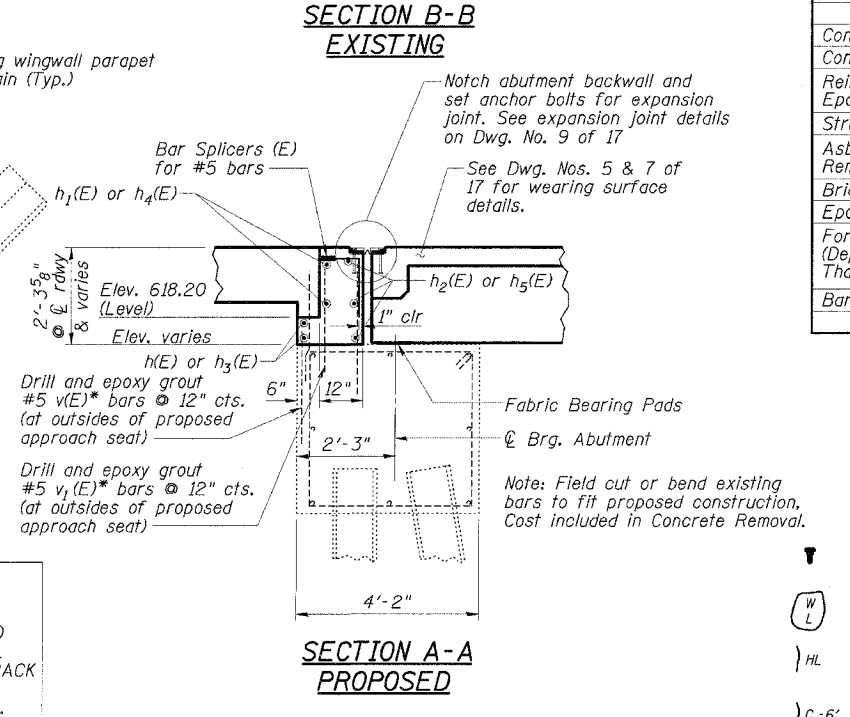
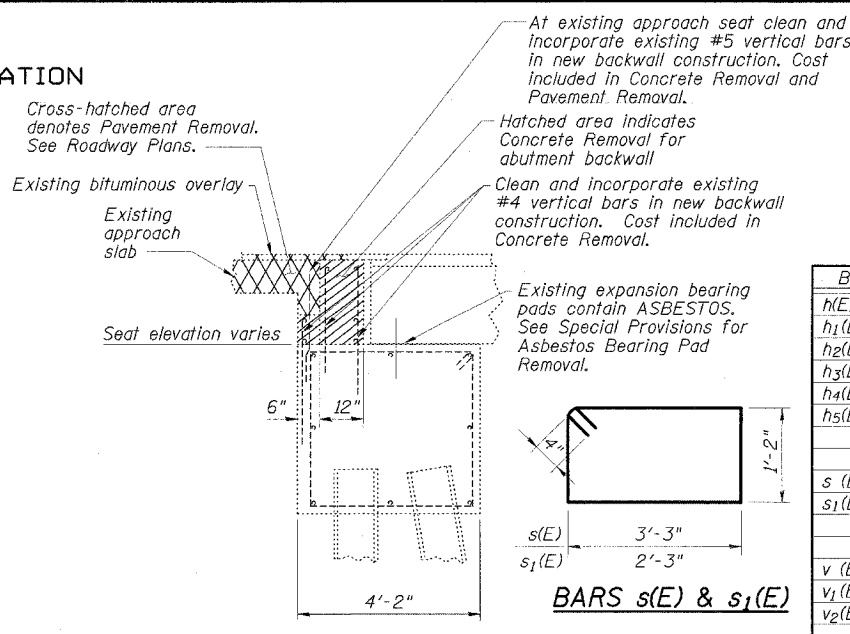
* Epoxy grout bars in 8" min. depth drilled holes according to Section 584 of the Standard Specifications



NOTE: ABUTMENT CRACK REPAIR LENGTHS AND FORMED CONCRETE REPAIR AREAS ARE ESTIMATED FROM 3-31-05 SURVEY WORK. ACTUAL LOCATIONS AND QUANTITIES OF REPAIRS SHALL BE SHOWN BY THE ENGINEER ON THE AS-BUILT PLANS FOR THIS SECTION.

ESCA
CONSULTANTS, INC.

DESIGNED BY:	ELH	8/05
DRAWN BY:	DWH	8/05
CHECKED BY:	ELH	12/05
APPROVED BY:	RDP	12/05



NORTH ABUTMENT
BILL OF MATERIAL

Bar	No.	Size	Length	Shape
h(E)	2	#5	30'-9"	
h1(E)	2	#5	31'-3"	
h2(E)	3	#5	31'-11"	
h3(E)	2	#5	30'-5"	
h4(E)	2	#5	29'-11"	
h5(E)	3	#5	29'-3"	
s(E)	5	#4	9'-6"	
s1(E)	5	#4	7'-6"	
v(E)	12	#5	2'-3"	
v1(E)	23	#5	2'-10"	
v2(E)	5	#5	2'-0"	
Concrete Removal		Cu. Yd.	5.9	
Concrete Structures		Cu. Yd.	7.0	
Reinforcement Bars, Epoxy Coated		Pound	610	
Structure Excavation		Cu. Yd.	8.8	
Asbestos Bearing Pad Removal		Each	24	
Bridge Seat Sealer		Sq. Ft.	15	
Epoxy Crack Sealing		Foot	62	
Formed Concrete Repair (Depth Equal to or Less Than 5")		Sq. Ft.	15.7	
Bar Splicers		Each	39	

REPAIR LEGEND
Inspection Date: 3-31-05

- Rust Stained Area
- Moisture Stained or Leached Area
- Hairline Crack - Not to be Sealed
- Crack (> 1/16" Width)
- Leached Crack (> 1/16" Width)
- Delaminated Area
- Spalled Area (Depth < 5")

NORTH ABUTMENT
IL 23 OVER PRAIRIE CREEK
FAP ROUTE 68 - SECTION 101BR
LIVINGSTON COUNTY
STATION 280+55.00
STRUCTURE NO. 053-0153