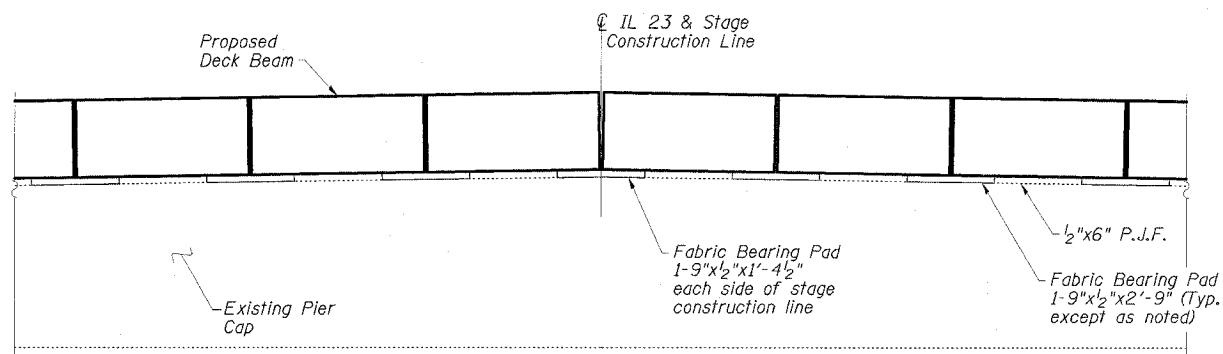


STATE OF ILLINOIS
DEPARTMENT OF TRANSPORTATION

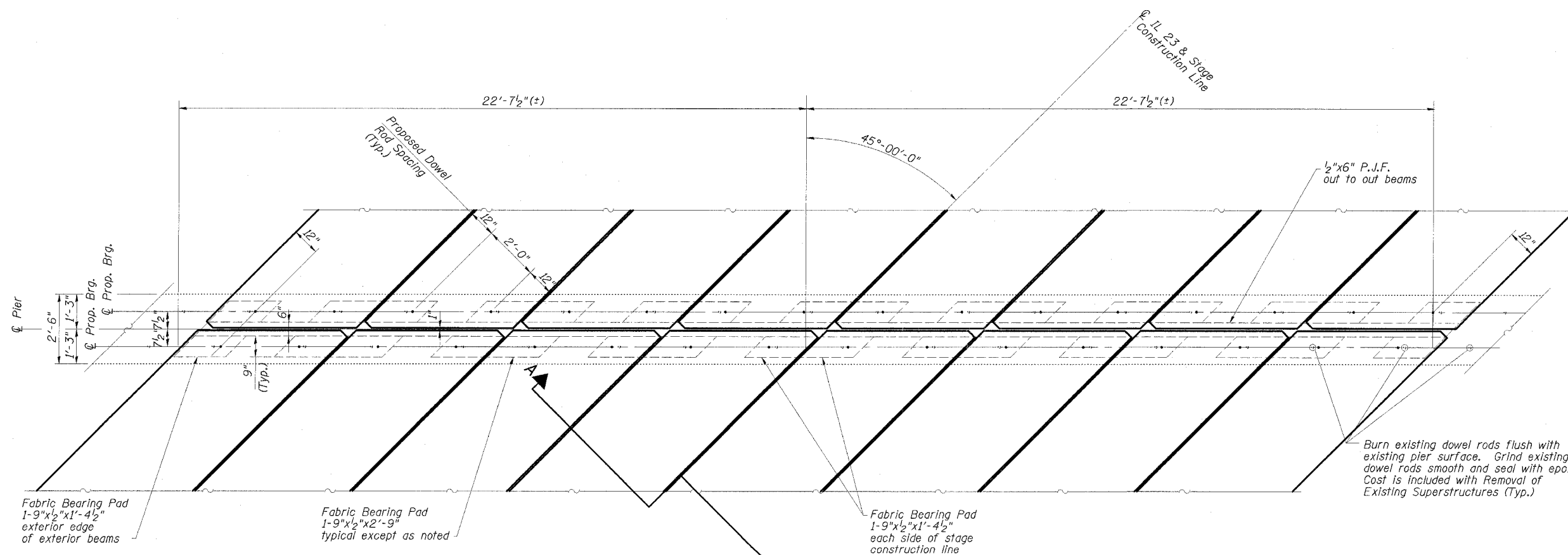
ROUTE NO.	SECTION	COUNTY	TOTAL SHEETS	SHEET NO.
FAP 68	10IBR	LIVINGSTON	47	30
STA.	TO STA.			
FED. ROAD DIST. NO.	ILLINOIS	FED. AID PROJECT		
DWG. NO. 16 OF 17				

CONTRACT NO. 66606



SECTION A-A

(Concrete wearing surface and dowel rods not shown)



PIER BEARING SEAT PLAN

(Concrete wearing surface not shown)

ESCA
CONSULTANTS, INC.

DESIGNED BY:	ELH	8/05
DRAWN BY:	DWH	8/05
CHECKED BY:	ELH	10/05
APPROVED BY:	RDP	10/05

PIER DETAILS
IL 23 OVER PRAIRIE CREEK
FAP ROUTE 68 - SECTION 10IBR
LIVINGSTON COUNTY
STATION 280+55.00
STRUCTURE NO. 053-0153