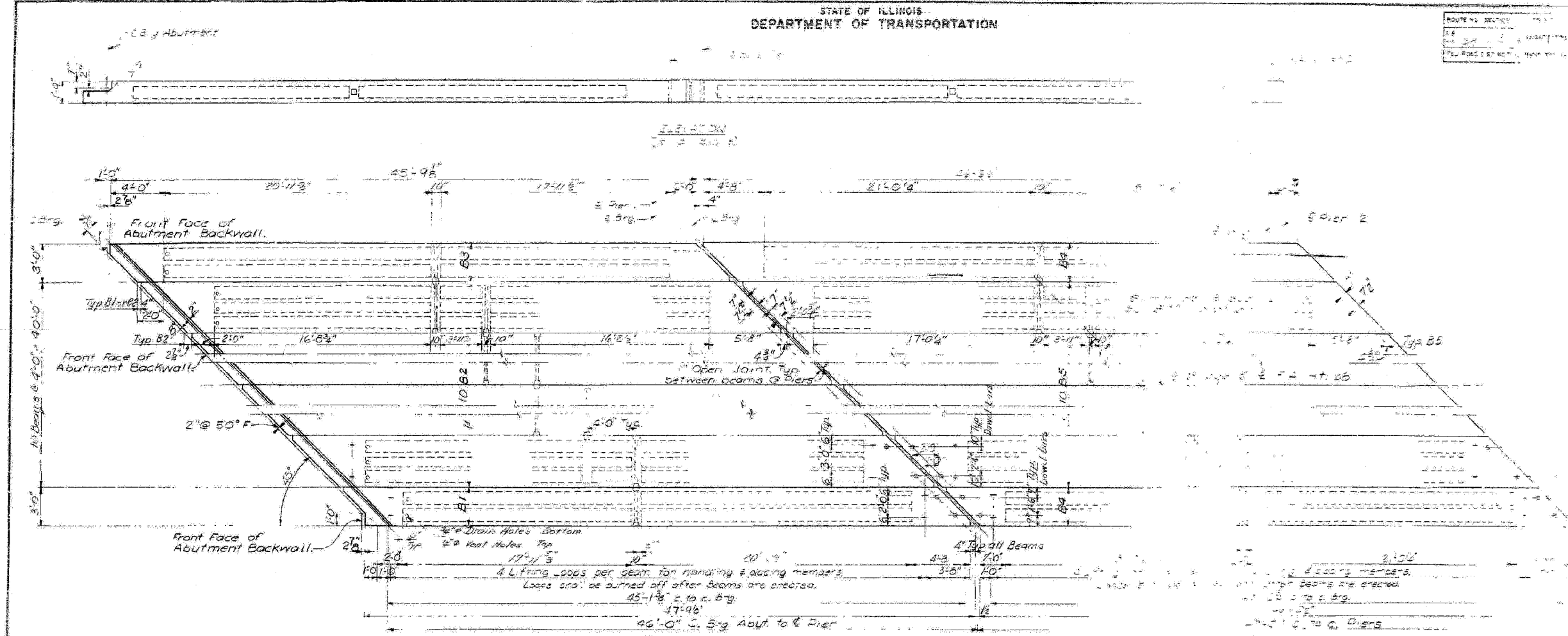


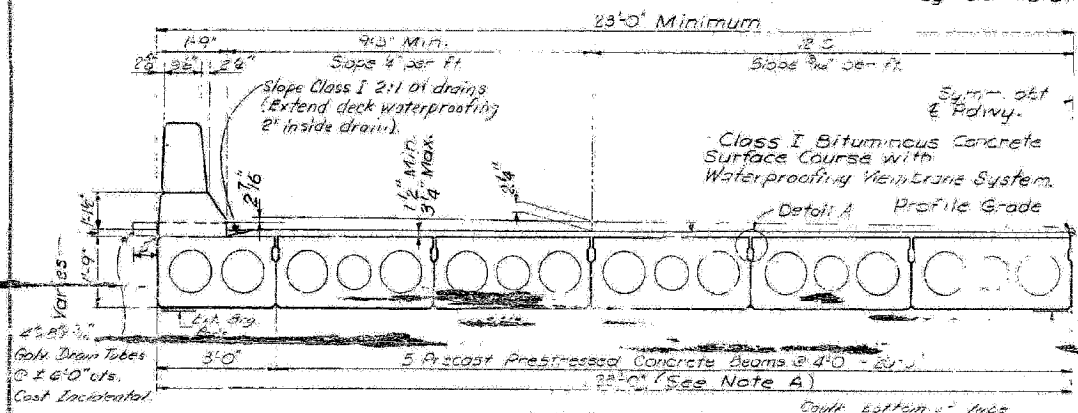
FAP RTE	SECTION	COUNTY	TOTAL SHEETS	SHEET NO.
68	101BR	LIVINGSTON	47	34
STA.		TO STA.		
FED. ROAD DIST. NO.		ILLINOIS FED. AID PROJECT		

STATE OF ILLINOIS
DEPARTMENT OF TRANSPORTATION



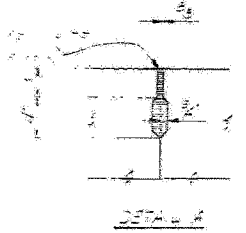
Span 1
(Span 3 same as Span 1 by 180° rotation)

PART PLAN



HALF CROSS SECTION

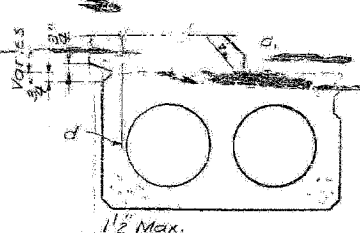
Note A:
Out to out dimension of beams may vary in accordance with maximum allowable dimensional tolerances as per Specification Art. 505.06 (d). If out to out dimension is greater than 46'-0", the 9'-3" shoulder shall be increased accordingly so that outside face of barrier curb is flush with outside edge of outside beam. Maximum out to out of beams may be 46'-5" and minimum out to out of beams may be 45'-9".



DETAIL A

NOTES

Refer to sheets 4 and 5 for beam and pier details. Beams shall include furnishing of reinforcement as shown or noted on sheets 4, 5, 6, 7, 8, 9, 10, 11, 12, 13, 14, 15, 16, 17, 18, 19, 20, 21, 22, 23, 24, 25, 26, 27, 28, 29, 30, 31, 32, 33, 34, 35, 36, 37, 38, 39, 40, 41, 42, 43, 44, 45, 46, 47, 48, 49, 50, 51, 52, 53, 54, 55, 56, 57, 58, 59, 60, 61, 62, 63, 64, 65, 66, 67, 68, 69, 70, 71, 72, 73, 74, 75, 76, 77, 78, 79, 80, 81, 82, 83, 84, 85, 86, 87, 88, 89, 90, 91, 92, 93, 94, 95, 96, 97, 98, 99, 100.



CURB TREATMENT IF OUT TO OUT OF BEAMS < 46'-0"

DESIGNED	J. Liebsch
CHECKED	D. Beardsley
DRAWN	R.C. Hunt
	T. Dillon