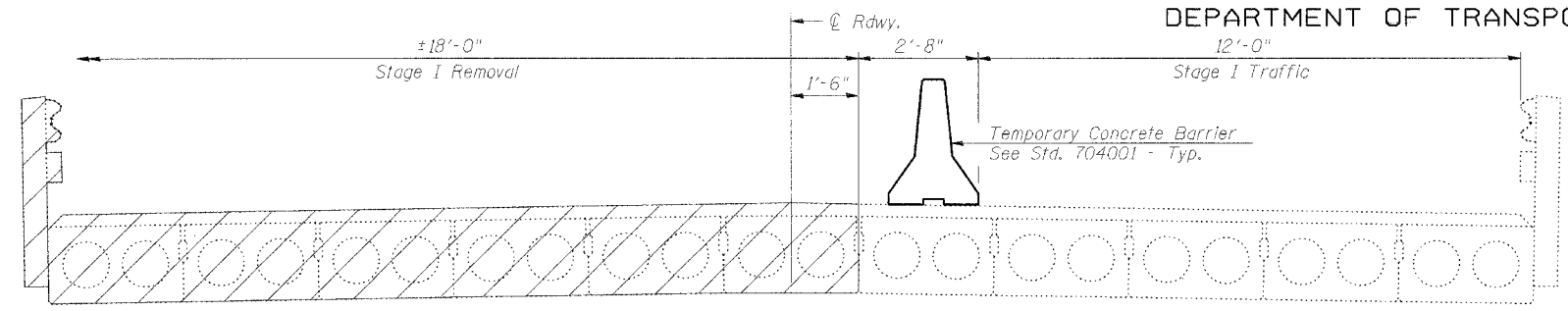


STATE OF ILLINOIS
DEPARTMENT OF TRANSPORTATION

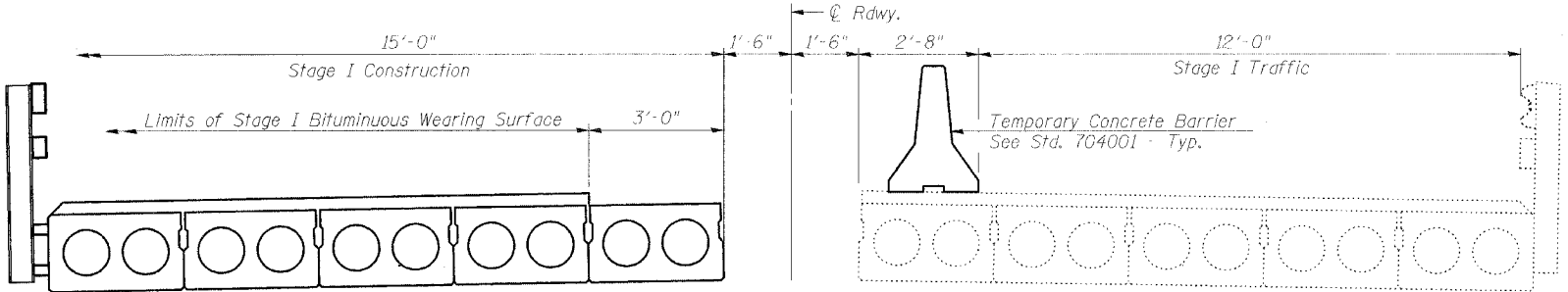
ROUTE NO.	SECTION	COUNTY	TOTAL SHEETS	SHEET NO.
FAP 840	136 BR-1	IROQUOIS	45	12
FED. ROAD DIST. NO.	ILLINOIS	FED. AID PROJECT-		

SHEET NO. 2
9 SHEETS

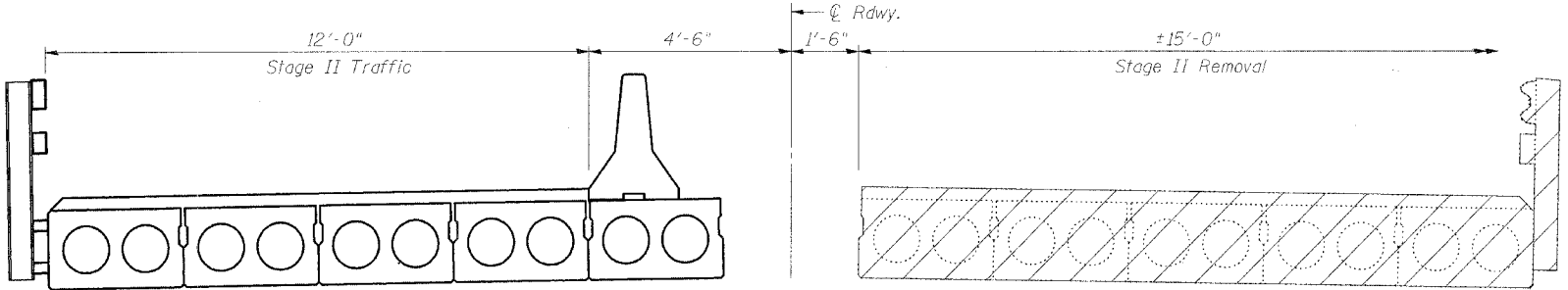
Contract #66668



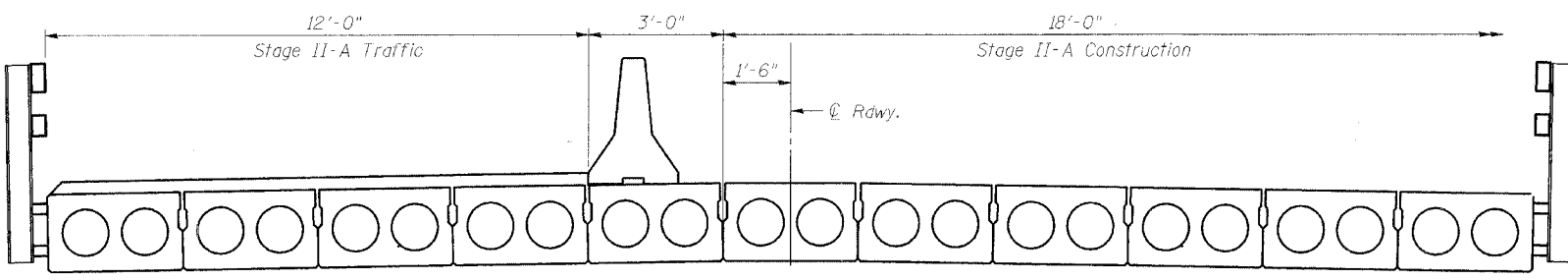
STAGE I REMOVAL



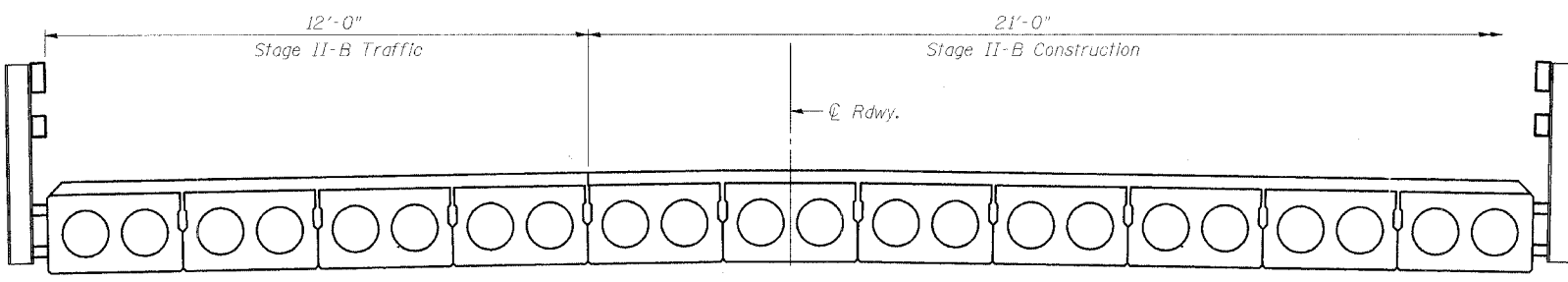
STAGE I CONSTRUCTION



STAGE II REMOVAL

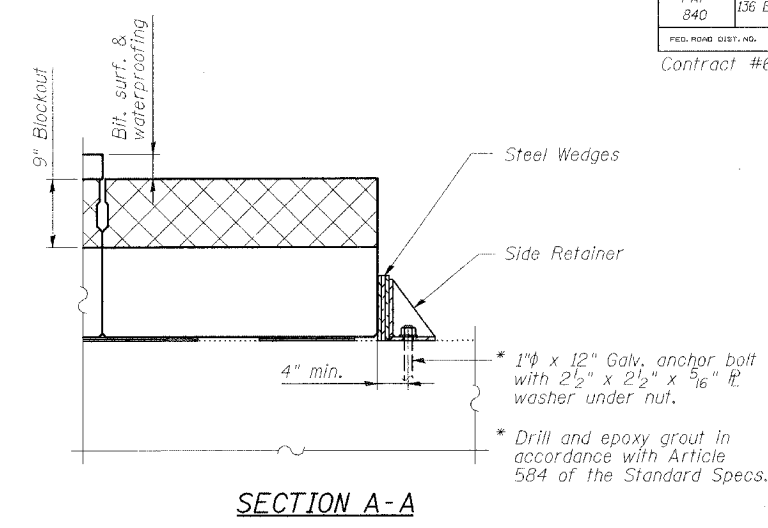


STAGE II-A CONSTRUCTION

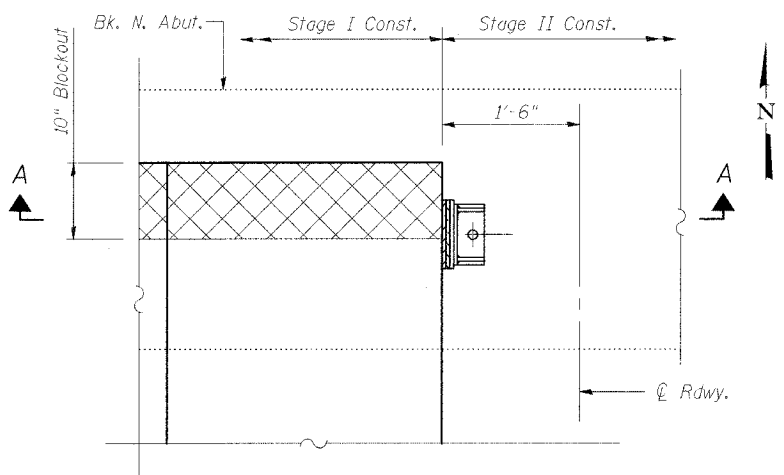


STAGE II-B CONSTRUCTION

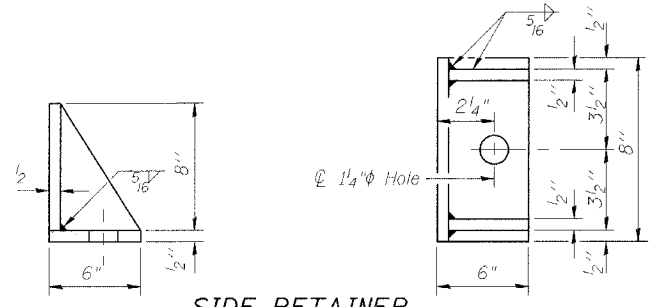
Notes:
Remove Temporary Concrete Barrier after Stage II-A beams and Steel Bridge Rail are in place and prior to placement of Bituminous Concrete Surface Course in Stage II-B. See Roadway Plans.



SECTION A-A



PLAN



SIDE RETAINER

Equivalent rolled angle with stiffeners will be allowed in lieu of welded plates.

Note:
Hatched areas indicate Removal of Existing Superstructures.
All cross-sections are looking North.
All dimensions are at right angles to \odot Roadway.
For quantity of Temporary Barrier, see Roadway Plans.

Notes:
After block-outs are poured and cured the retainer angle shall be removed. Anchor bolt shall be cut or burn flush with the existing concrete surface, grind smooth and seal with epoxy.
Cost of side retainer and accessories are included with "Furnishing and Erecting Structural Steel".

REVISIONS	
NAME	DATE

ILLINOIS DEPARTMENT OF TRANSPORTATION
STAGE CONSTRUCTION DETAILS
FAP ROUTE 840 (IL 49) OVER SHAVETAIL CREEK
SECTION 136 BR-1 IROQUOIS COUNTY
STA. 616+84.00
S.N. 038-0093

SCALE: VERT. _____
HORIZ. _____
DATE: 9/27/05

DRAWN BY: HEBERLING
DESIGNED BY: SANFORD
CHECKED BY: TRELLO

GREENE & BRADFORD, INC.
OF SPRINGFIELD
CONSULTING ENGINEERS
200 CONSTRUCTION DRIVE
SPRINGFIELD, ILLINOIS 62761
PROFESSIONAL ENGINEERS
03179-4845, 202-762-8281 FAX: 202-762-8282 www.greenebradford.com

COMPUTER FILE NO.
SN038-0093.STG.dgn
PROJECT 03236 W012
11/3/05-MML

FILE NAME = I:\03236\w012\dr\dwg\stg\sn038-0093\SN038-0093-STG.dgn
PLOT DATE = 10/22/2005
PLOT TIME = 15:43 PM
OPERATOR = michaell