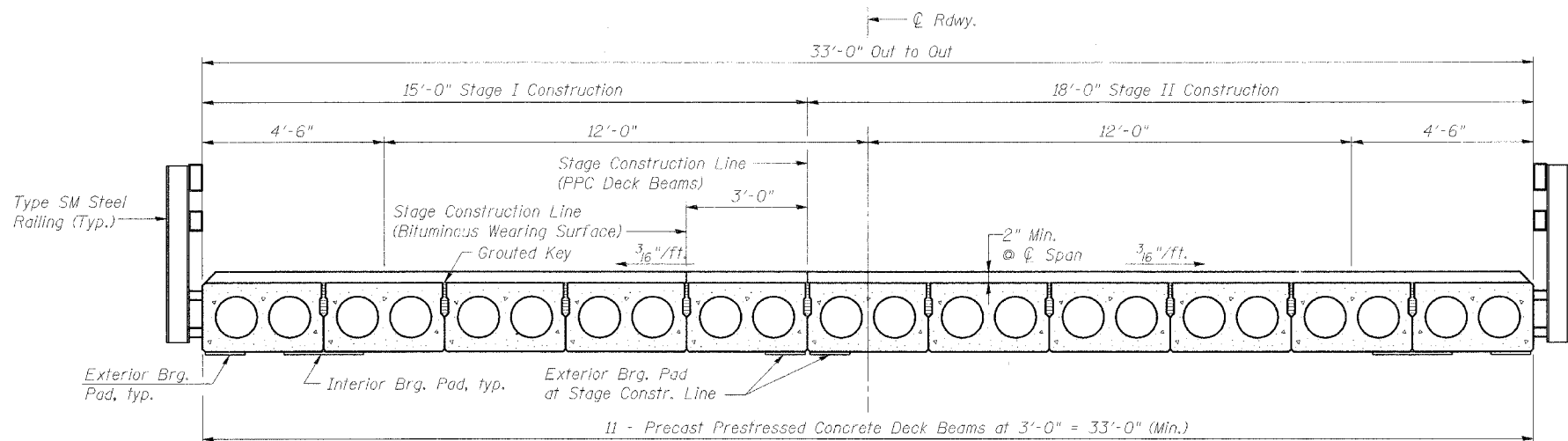
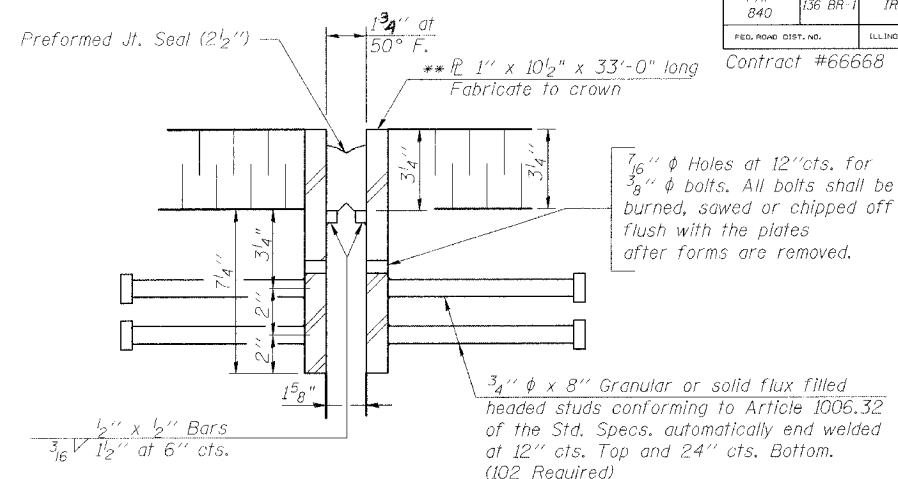


STATE OF ILLINOIS
DEPARTMENT OF TRANSPORTATION

ROUTE NO.	SECTION	COUNTY	TOTAL SHEETS	SHEET NO.	SHEET NO. 4
FAP 840	136 BR-1	IROQUOIS	45	14	9 SHEETS
FED. ROAD DIST. NO.	ILLINOIS	FED. AID PROJECT	Contract #66668		



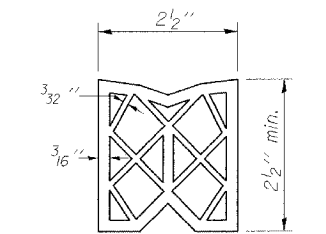
CROSS SECTION
(Looking North)



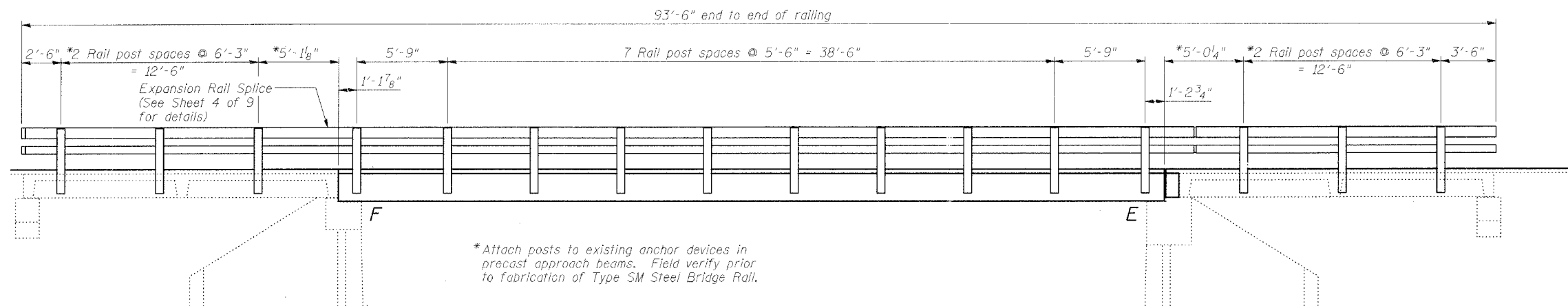
DETAIL A

**Furnish in segments of 20 ft. maximum length. Maximum space between installed segments shall be 3/16". Seal space with Silicone Sealant suitable for Structural Steel.

Note: After fabrication all surfaces of the steel plates shall be given one shop coat of paint specified for structural steel. No field painting required.

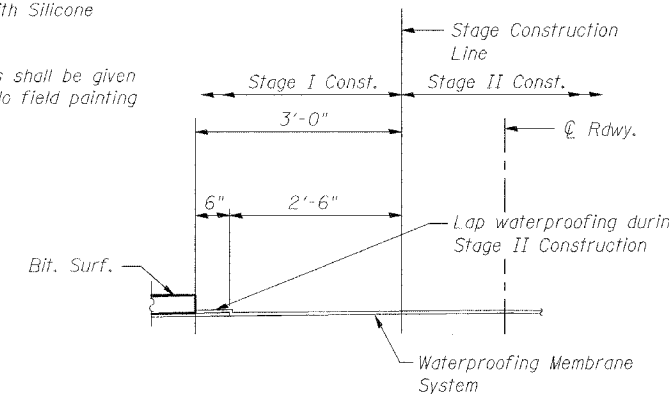


PREFORMED JOINT SEAL

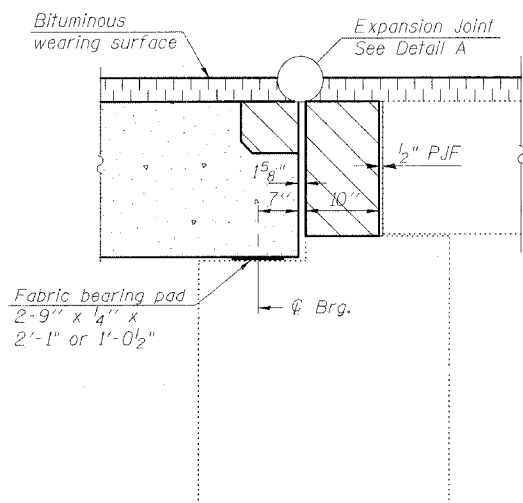


ELEVATION

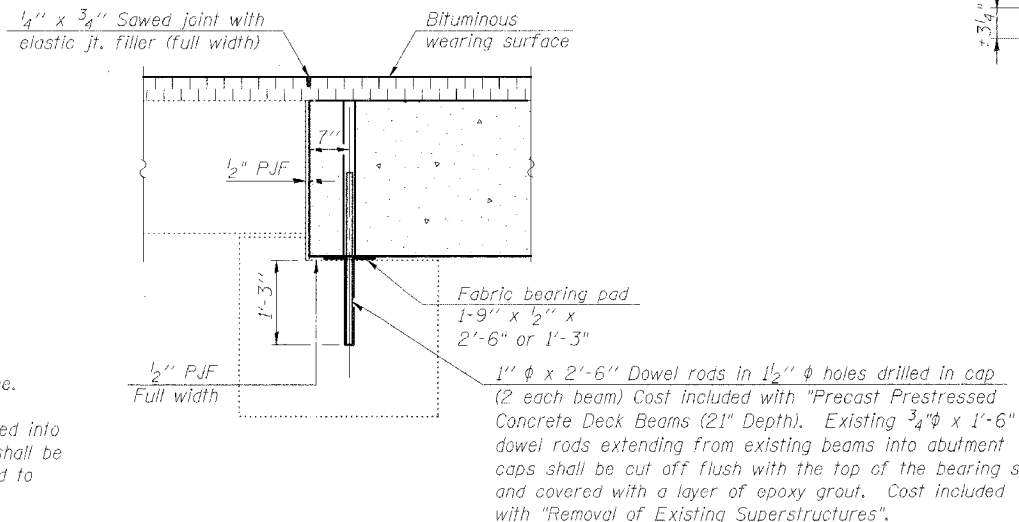
*Attach posts to existing anchor devices in precast approach beams. Field verify prior to fabrication of Type SM Steel Bridge Rail.



WATERPROOFING TREATMENT AT STAGE CONSTRUCTION

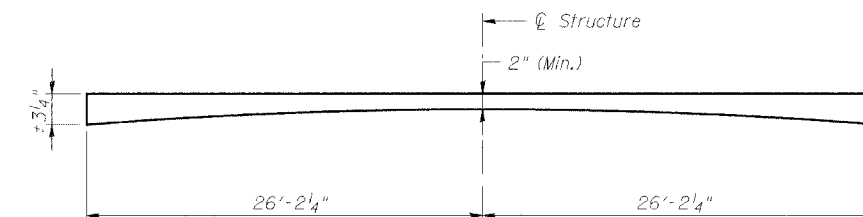


SECTION THRU NORTH ABUTMENT



SECTION THRU SOUTH ABUTMENT

Notes:
Hatched area to be poured after beams are in place. See Sheet 5 of 9 for bearing pad details.
After beams have been erected, holes shall be drilled into substructure and anchor dowels placed. Dowel holes shall be filled with non-shrink grout to top of beam and allowed to cure min. 24 hrs. prior to grouting the shear keys.



BITUMINOUS WEARING SURFACE PROFILE

REVISIONS	
NAME	DATE

ILLINOIS DEPARTMENT OF TRANSPORTATION
SUPERSTRUCTURE DETAILS
FAP ROUTE 840 (IL 49) OVER SHAVETAILE CREEK
SECTION 136 BR-1 IROQUOIS COUNTY
STA. 616+84.00
S.N. 038-0093

SCALE: VERT. HORIZ.
DATE: 9/27/05
DRAWN BY: HEBERLING
DESIGNED BY: SANFORD
CHECKED BY: TRELLO
COMPUTER FILE NO. SNO38-0093_SST.dgn
PROJECT 03236 W012
11/3/05-MML



FILE NAME = I:\03236\w012\dr\dwg\136 BR-0093\SM038-0093_SST.dgn
PLOT DATE = 10/22/2005
PLOT TIME = 15:57:09 PM
OPERATOR = michellel