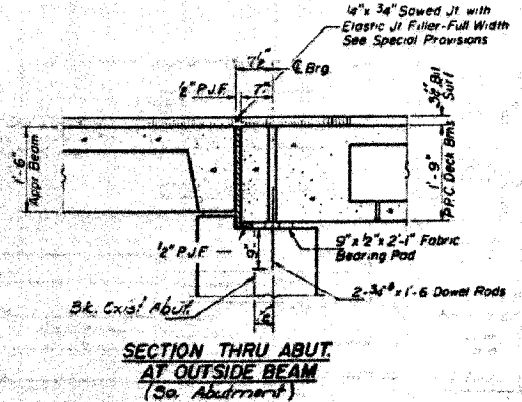
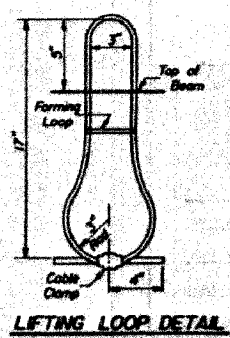
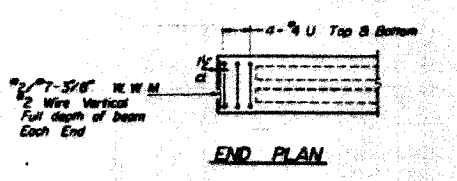
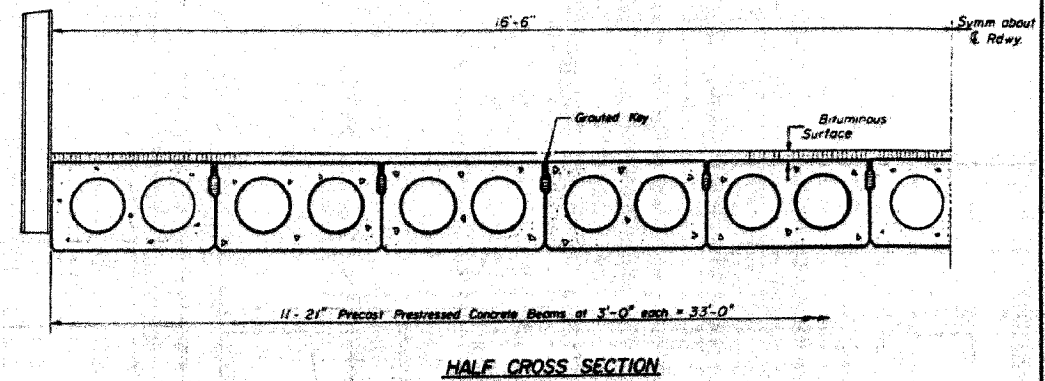
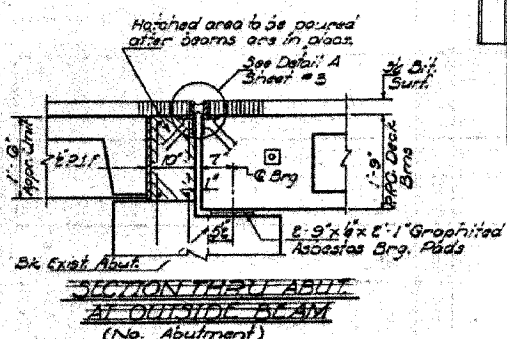
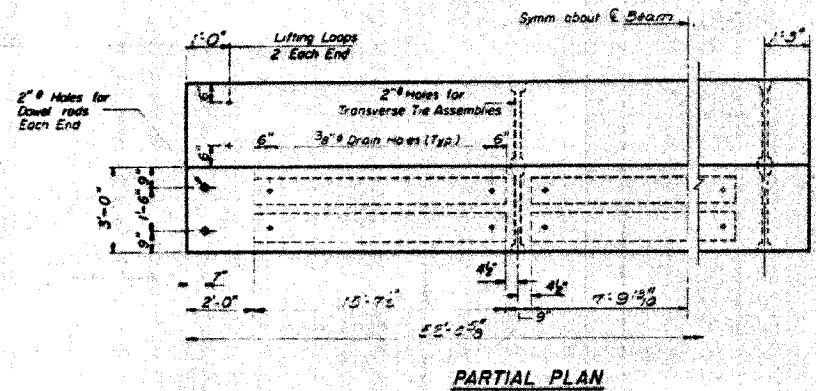
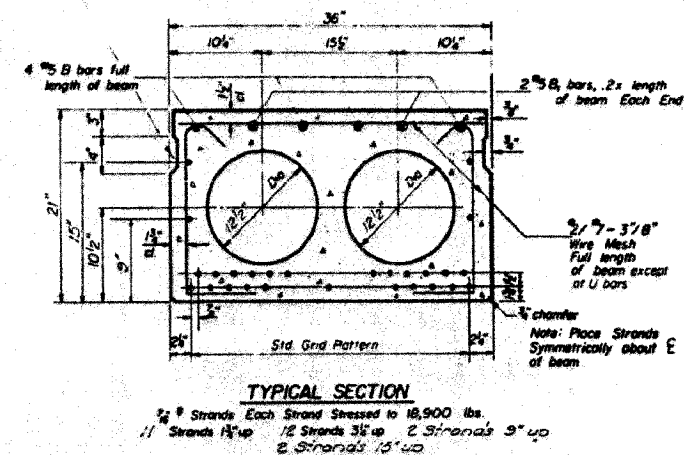
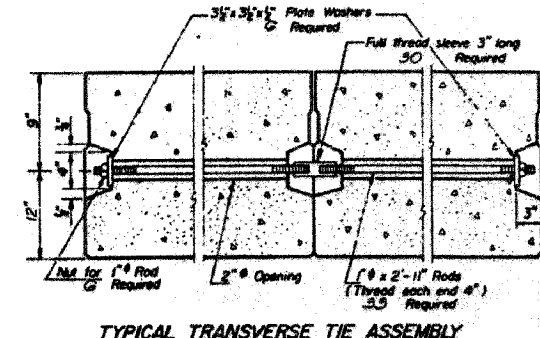
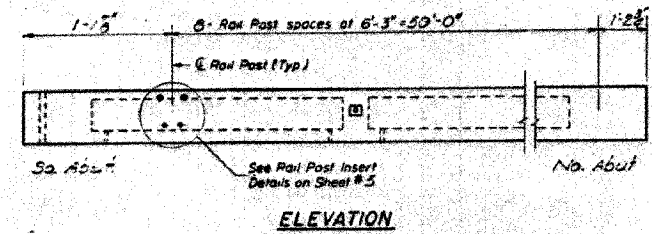
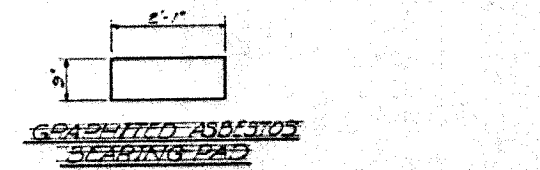
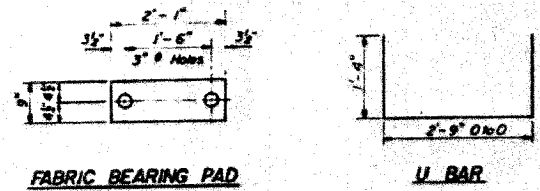


F.A.S. RTE.	SECTION	COUNTY	TOTAL SHEETS	SHEET NO.
840	136 BR-1	IROQUOIS	45	26
STA.		TO STA.		
FED. ROAD DIST. NO.		ILLINOIS FED. AID PROJECT		

STATE OF ILLINOIS
DEPARTMENT OF PUBLIC WORKS & BUILDINGS
DIVISION OF HIGHWAYS

DATE	BY	CHKD	APP'D	REV.

SHEET NO. 2
7 SHEETS



GENERAL NOTES

Prestressing steel shall be non-galvanized high strength, stress-relieved 7-wire strand. The nominal diameter shall be 1/2" and the nominal cross-sectional area shall be 0.109 sq. in. Lifting loops shall be 1/2" diameter, 6x19 class wire rope with fiber core and shall have a minimum ultimate tensile strength of 20,000 lbs. The 1" rods in the transverse tie assembly shall be tightened to a snug fit and the threads set. Pockets that receive transverse tie bar on outside beam shall be filled with grout after transverse tie assembly is in place. Longitudinal shear keys shall be packed with a very dry mix of 2:1 sand and P.C. mortar. After beams have been erected, holes for dowel anchors shall be drilled into sub-structure. Grout dowels drilled and filled. Steel for dowel rods shall be ASTM A-306 or ASTM A-307. Steel for transverse tie rods shall be ASTM A-306, Grade 70-80. After fabrication the transverse tie assembly (tie rods, nuts, washers and sleeves) shall be hot-dipped galvanized in accordance with A.S.T.M. Designation A153. Cost of reinforcement and accessories cast into the beam, or bearing pads, of other angles, and of grouting longitudinal shear keys is included in unit price bid for Precast Prestressed Concrete Deck Beams.

BILL OF MATERIAL

Reinforced 4 Scales (E.C.)	Un. #	53
Precast Prestressed Concrete Deck Beams (21')	Sq. Ft.	1729
Removal of Existing Superstructure	Each	1

SUPERSTRUCTURE
587-91-49 SEC 136-99
IROQUOIS COUNTY
374-205105-00

DESIGNED	John Schreiber	DATE	May 19 1971
CHECKED	James Hines	DRAWN	J. SCHNEIDER
IN CHARGE	J. SCHNEIDER	OPERATOR	J. L. Armstrong
CHECKED	J. L. Armstrong		

PD-1-S 11-19-65 Rev 5-20-68
SA-2 21PPC CR Bms

FOR INFORMATION ONLY

REVISIONS	
NAME	DATE

ILLINOIS DEPARTMENT OF TRANSPORTATION
EXISTING BRIDGE PLANS
FAP RTE 840 (IL RTE 49)
SECTION 136 BR-1
IROQUOIS COUNTY

SCALE: VERT. _____
HORIZ. _____
DATE: 12/7/05

DRAWN BY: LANDREY
CHECKED BY: BOTT

GREENE & BRADFORD, INC.
OF SPRINGFIELD

COMPUTER FILE NO.
03236.W012.EPLN
PROJECT 03236 W012
12/7/05 - MML

PLT DATE = 12/21/2005
FILE NAME = J:\03236\02\Drawings\03236-W012.EPLN.dgn
PLOT SCALE = 96.000000 / IN.
OPERATOR = michelle