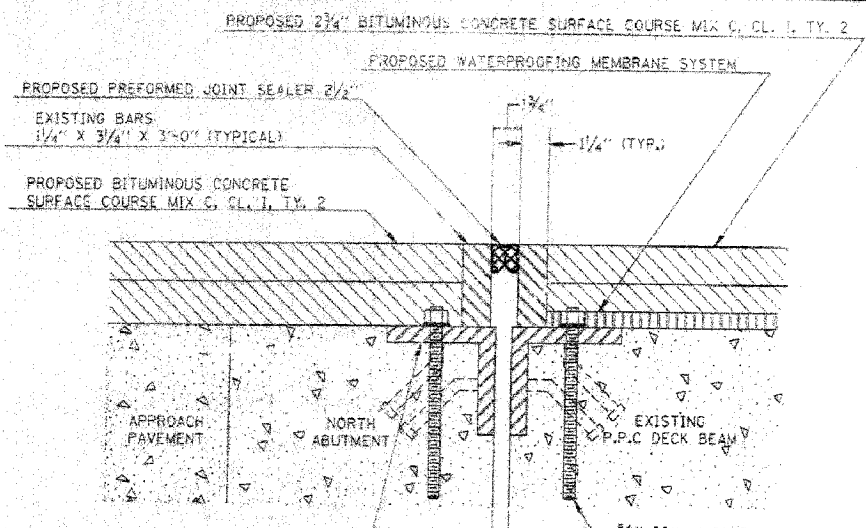


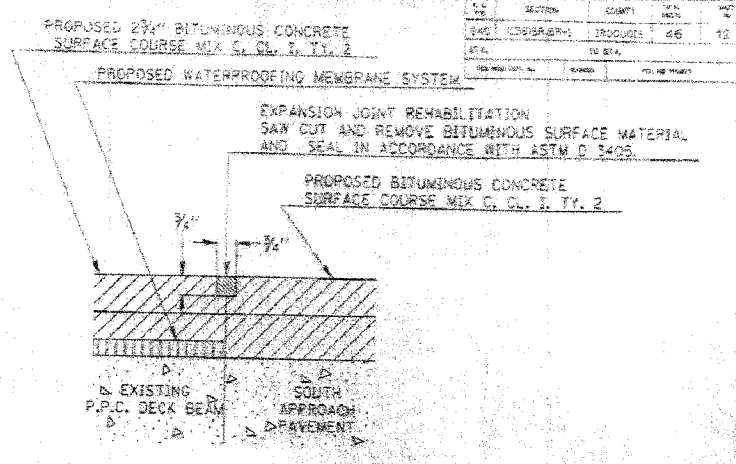
F.A.S. RTE.	SECTION	COUNTY	TOTAL SHEETS	SHEET NO.
840	136 BR-1	IROQUOIS	45	33
STA.	TO STA.			
FED. ROAD DIST. NO.	ILLINOIS FED. AID PROJECT			



RE-ANCHORING OF EXISTING ANGLES WILL BE REQUIRED. PRESSURE GROUT UNDER ANGLE IF REQUIRED. (SEE NOTES)

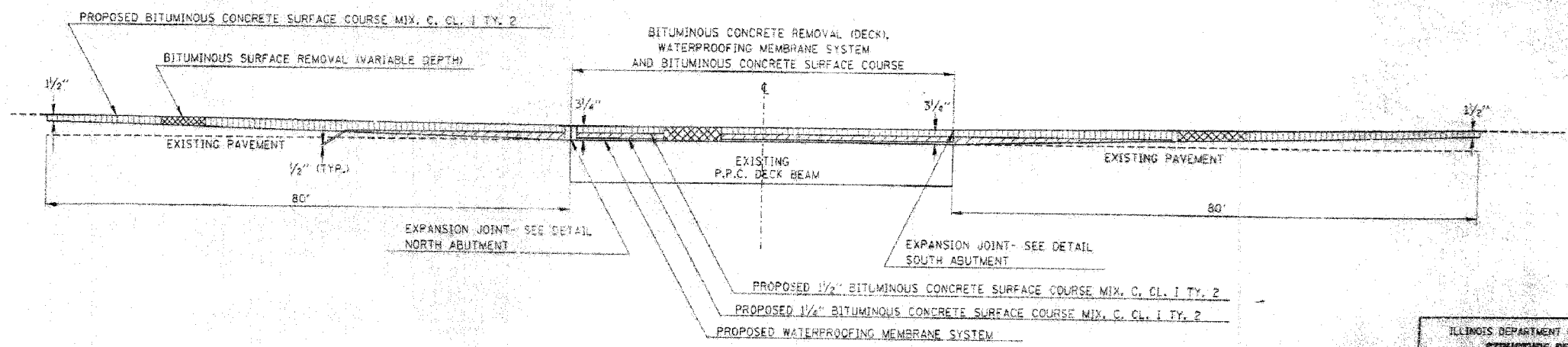
5/8" DIA. X 9" THREADED ANCHOR ROD & NUT (WITH FLAT WASHER & LOCK WASHER) SET IN EPOXY AT ± 12" CENTERS. (IF USED IN CONJUNCTION WITH NEOPRENE JOINT, SPACE TO MATCH BOLT PATTERN.) EPOXY GROUT IN ACCORDANCE WITH SECTION 584 OF STANDARD SPECIFICATIONS. (TYPICAL - BOTH ANGLES)

**EXISTING EXPANSION JOINT DETAIL
NORTH ABUTMENT**



**EXISTING EXPANSION JOINT DETAIL
SOUTH ABUTMENT**

NOTES: LOOSE ANGLES WILL BE BOLTED TO THE END OF THE DECK OR P.P.C. DECK BEAMS BY FIELD DRILLING HOLES THROUGH THE EXISTING ANGLES AND EPOXY GROUTING THREADED RODS INTO THE DECK. IF THE EXISTING ANGLES SOUND LOOSE AFTER THE EPOXY GROUTED RODS ARE IN PLACE, HOLES WILL BE DRILLED AND EPOXY INJECTED UNDER THE ANGLES AT THE ENGINEER'S DISCRETION.



TAPER DETAIL

REVISIONS	
NAME	DATE

ILLINOIS DEPARTMENT OF TRANSPORTATION
STRUCTURE RENOVATION
 FAP 840 (IL 49)
 SECTION 136 BR
 STRUCTURE NO. 036-0083
 IROQUOIS COUNTY

SCALE: VERT. _____
 HORIZ. _____
 DATE: 12/7/05

DRAWN BY: SPK
 CHECKED BY: _____

REVISIONS	
NAME	DATE

ILLINOIS DEPARTMENT OF TRANSPORTATION
EXISTING BRIDGE PLANS
 FAP RTE 840 (IL RTE 49)
 SECTION 136 BR-1
 IROQUOIS COUNTY

SCALE: VERT. _____
 HORIZ. _____
 DATE: 12/7/05

DRAWN BY: LANDREY
 CHECKED BY: BOIT

GREENE & BRADFORD, INC.
 OF STENOGRAPH
 CONSULTING ENGINEERS
 1100 N. WASHINGTON ST., SUITE 100
 DEERFIELD, ILLINOIS 60015
 (708) 441-1100 FAX (708) 441-1101
 WWW.GREENEANDBRADFORD.COM

COMPUTER FILE NO.
 03236.W012.EPLN
 PROJECT 03236 W012
 12/7/05 - MML

FOR INFORMATION ONLY

PLOT DATE = 12/21/2005
 FILE NAME = J:\03236\w012-dr-bridge\03236_w012_epln.dgn
 PLOT SCALE = 50.0000000 / IN.
 OPERATOR = michelle